

Brake*Quip*

////// INNOVATIVE SOLUTIONS FOR AUTOMOTIVE PLUMBING

Fitting & Accessory Catalog



METRIC CONVERSION TABLE

FRACTION (IN.)	DECIMAL (IN.)	METRIC (MM)
1/32	0.031	0.79
1/16	0.063	1.59
3/32	0.094	2.38
1/8	0.125	3.17
5/32	0.156	3.97
3/16	0.188	4.76
7/32	0.219	5.56
1/4	0.25	6.35
9/32	0.281	7.14
5/16	0.313	7.94
11/32	0.344	8.73
3/8	0.375	9.52
13/32	0.406	10.32
7/16	0.438	11.11
15/32	0.469	11.91
1/2	0.5	12.70
17/32	0.531	13.49
9/16	0.563	14.29
19/32	0.594	15.08
5/8	0.625	15.88
21/32	0.656	16.67
11/16	0.688	17.46
23/32	0.719	18.26
3/4	0.75	19.05
25/32	0.781	19.84
13/16	0.813	20.64
27/32	0.844	21.43
7/8	0.875	22.22
29/32	0.906	23.02
15/16	0.938	23.81
31/32	0.969	24.61
1	1.0	25.40
1 1/32	1.031	26.19
1 1/16	1.063	26.99
1 3/32	1.094	27.78
1 1/8	1.125	28.57
1 5/32	1.156	29.37
1 3/16	1.188	30.16
1 7/32	1.219	30.96
1 1/4	1.25	31.75
1 9/32	1.281	32.54
1 5/16	1.313	33.34
1 11/32	1.344	34.13
1 3/8	1.375	34.93
1 13/32	1.406	35.72
1 7/16	1.438	36.51
1 15/32	1.469	37.31
1 1/2	1.5	38.10
1 17/32	1.531	38.89
1 9/16	1.563	39.69
1 19/32	1.594	40.48
1 5/8	1.625	41.28
1 21/32	1.656	42.07
1 11/16	1.688	42.86
1 23/32	1.719	43.66
1 3/4	1.75	44.45
1 25/32	1.781	45.24
1 13/16	1.813	46.04
1 27/32	1.844	46.83
1 7/8	1.875	47.62
1 29/32	1.906	48.42
1 15/16	1.938	49.21
1 31/32	1.969	50.01
2	2.0	50.80

FRACTION (IN.)	DECIMAL (IN.)	METRIC (MM)
2 1/32	2.031	51.59
2 1/16	2.063	52.39
2 3/32	2.094	53.18
2 1/8	2.125	53.98
2 5/32	2.156	54.77
2 3/16	2.188	55.56
2 7/32	2.219	56.36
2 1/4	2.25	57.15
2 9/32	2.281	57.94
2 5/16	2.313	58.74
2 11/32	2.344	59.53
2 3/8	2.375	60.32
2 13/32	2.406	61.12
2 7/16	2.438	61.91
2 15/32	2.469	62.71
2 1/2	2.5	63.50
2 17/32	2.531	64.29
2 9/16	2.563	65.09
2 19/32	2.594	65.88
2 5/8	2.625	66.68
2 21/32	2.656	67.47
2 11/16	2.688	68.26
2 23/32	2.719	69.06
2 3/4	2.75	69.85
2 25/32	2.781	70.64
2 13/16	2.813	71.44
2 27/32	2.844	72.23
2 7/8	2.875	73.03
2 29/32	2.906	73.82
2 15/16	2.938	74.61
2 31/32	2.969	75.41
3	3.0	76.20
3 1/32	3.031	76.99
3 1/16	3.063	77.79
3 3/32	3.094	78.58
3 1/8	3.125	79.38
3 5/32	3.156	80.17
3 3/16	3.188	80.96
3 7/32	3.219	81.76
3 1/4	3.25	82.55
3 9/32	3.281	83.34
3 5/16	3.313	84.14
3 11/32	3.344	84.93
3 3/8	3.375	85.73
3 13/32	3.406	86.52
3 7/16	3.438	87.31
3 15/32	3.469	88.11
3 1/2	3.5	88.90
3 17/32	3.531	89.69
3 9/16	3.563	90.49
3 19/32	3.594	91.28
3 5/8	3.625	92.08
3 21/32	3.656	92.87
3 11/16	3.688	93.66
3 23/32	3.719	94.46
3 3/4	3.75	95.25
3 25/32	3.781	96.04
3 13/16	3.813	96.84
3 27/32	3.844	97.63
3 7/8	3.875	98.43
3 29/32	3.906	99.22
3 15/16	3.938	100.01
3 31/32	3.969	100.81
4	4.0	101.60

FRACTION (IN.)	DECIMAL (IN.)	METRIC (MM)
4 1/32	4.031	102.39
4 1/16	4.063	103.19
4 3/32	4.094	103.98
4 1/8	4.125	104.77
4 5/32	4.156	105.57
4 3/16	4.188	106.36
4 7/32	4.219	107.16
4 1/4	4.25	107.95
4 9/32	4.281	108.74
4 5/16	4.313	109.54
4 11/32	4.344	110.33
4 3/8	4.375	111.12
4 13/32	4.406	111.92
4 7/16	4.438	112.71
4 15/32	4.469	113.51
4 1/2	4.5	114.30
4 17/32	4.531	115.09
4 9/16	4.563	115.89
4 19/32	4.594	116.68
4 5/8	4.625	117.47
4 21/32	4.656	118.27
4 11/16	4.688	119.06
4 23/32	4.719	119.86
4 3/4	4.75	120.65
4 25/32	4.781	121.44
4 13/16	4.813	122.24
4 27/32	4.844	123.03
4 7/8	4.875	123.82
4 29/32	4.906	124.62
4 15/16	4.938	125.41
4 31/32	4.969	126.21
5	5.0	127.00
5 1/32	5.031	127.79
5 1/16	5.063	128.59
5 3/32	5.094	129.38
5 1/8	5.125	130.17
5 5/32	5.156	130.97
5 3/16	5.188	131.76
5 7/32	5.219	132.56
5 1/4	5.25	133.35
5 9/32	5.281	134.14
5 5/16	5.313	134.94
5 11/32	5.344	135.73
5 3/8	5.375	136.52
5 13/32	5.406	137.32
5 7/16	5.438	138.11
5 15/32	5.469	138.91
5 1/2	5.5	139.70
5 17/32	5.531	140.49
5 9/16	5.563	141.29
5 19/32	5.594	142.08
5 5/8	5.625	142.88
5 21/32	5.656	143.67
5 11/16	5.688	144.46
5 23/32	5.719	145.26
5 3/4	5.75	146.05
5 25/32	5.781	146.84
5 13/16	5.813	147.64
5 27/32	5.844	148.43
5 7/8	5.875	149.22
5 29/32	5.906	150.02
5 15/16	5.938	150.81
5 31/32	5.969	151.61
6	6.0	152.40

CONTENTS

TITLE	PAGE NO.	TITLE	PAGE NO.
Miscellaneous Hose Fittings		Plastic Clips	52
Male Swivel.	2-4	Rubber Brake Hose & Accessories	
Female Swivel.	4	Rubber Brake Hose	53
Center Joiner	5	Rubber Hose Cutter.	53
Clutch Special.	5	Stainless Steel Braided Hose & Accessories	
Compression	5	Fitting Joint Supports	54
Lifesaver, Universal	6	Clear Center Fitting Adapter Tube	54
Banjo Fittings		Stainless Steel Braided Brake Hose.	54
Round Style - Straight	7-8	Polished Stainless Steel Fittings	54
Round Style - Bent.	9-11	Tools	54
Block Style	12-15	Metal Tube Program	
Tube Style - Either Side.	16-17	EziBend and Stainless Tube	55
Universal.	17	Brake Tube Protector	55
Tube Style - Left/Right	18-24	Flaring Tool Kit	56
Center Support Fittings		Tube Straightener	56
Clip Mount.	25-26	Brake Tube Pliers.	57
Bracket Mount.	26-27	Brake Tube Bender	57
Imperial Female Fittings		Miscellaneous Fittings	58
Clip Mount.	28-30	Consumables	58
Bolt On Mount.	31-32	Tube Nuts	59
No Mount.	32	Weld On Banjo Heads.	59
Bulkhead Mount	33-34	Thread Adapters	60
Bracket Mount.	34-35	Female Tube Joiners	60
Imperial Male		Copper Washers	60
Standard Mount.	36-37	Bulkhead Nuts	61
Bulkhead Mount	37	3 Way Tube Tee's With Mounting Hole.	61
Clip Mount.	37	Banjo Unions	61
Metric Female Fittings		Banjo Adapters.	61
Clip Mount.	38-41	Banjo Bolts	62
Bolt On Mount.	42	Bleed Screws.	62
Bulkhead Mount	42	Male Test Adapters	62
Spline Mount	42	Bump Tube Adapters	62
Bracket Mount.	43	Assortment Kits	63
Metric Male Fittings		Test Cones	64
Standard Mount.	44	System Aids & Accessories	64-65
Bulkhead Mount	45	Fitting Plugs	65
Clip Mount.	45	Bleeder Buster Tool Kit	66
Brackets		Fitting Storage System	66
Fitting Brackets	46-48	Index	67-71
Center Brackets	48-49	Educational Information	72-73
Universal.	49	Promotional Material	74
Rubber Hose Components.	51		

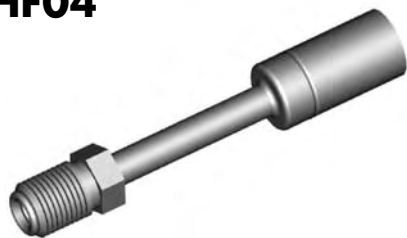
CAUTION: Illustrations shown in this reference guide may vary slightly in detail from actual parts due to manufacturer's tolerances and design differences. Note: Illustrations not to scale.

DISCLAIMER NOTICE

The illustrations and data contained in this illustrated reference guide are intended as an aid in identifying the various products and have been obtained and developed from the specifications and information available. Although BrakeQuip believes that such illustrations and data are correct, errors may exist and further verification on the part of the user may be necessary.

MISCELLANEOUS HOSE FITTINGS

HF04



Swivel

THREAD	FLARE	TUBE SIZE	OAL	FITS
7/16"NS	Double	1/4"	80mm	V

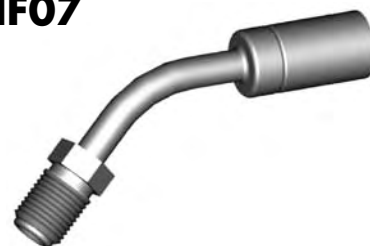
HF06



Swivel 90°

THREAD	FLARE	TUBE SIZE	OAL	FITS
7/16"NS	Double	1/4"	61mm	V

HF07



Swivel 45°

THREAD	FLARE	TUBE SIZE	OAL	FITS
7/16"NS	Double	1/4"	76mm	V

HF08



Swivel

THREAD	FLARE	TUBE SIZE	OAL	FITS
M10 x 1	DIN	3/16"	70mm	EU

HF15



Swivel

THREAD	FLARE	TUBE SIZE	OAL	FITS
7/16"NS	Double	1/4"	52mm	V

HF16



Swivel

THREAD	FLARE	TUBE SIZE	OAL	FITS
3/8"NF	Double	3/16"	57mm	V

HF16B



Swivel - Brass

THREAD	FLARE	TUBE SIZE	OAL	FITS
3/8"NF	Double	3/16"	49mm	V

HF17



Swivel 90°

THREAD	FLARE	TUBE SIZE	OAL	FITS
3/8"NF	Double	3/16"	49mm	V

HF18



Swivel

THREAD	FLARE	TUBE SIZE	OAL	FITS
1/2"NF	Double	5/16"	72mm	V

HF28



Swivel

THREAD	FLARE	TUBE SIZE	OAL	FITS
1/2"NF	Double	5/16"	60mm	V

HF29



Swivel 90°

THREAD	FLARE	TUBE SIZE	OAL	FITS
1/2"NF	Double	5/16"	62mm	V

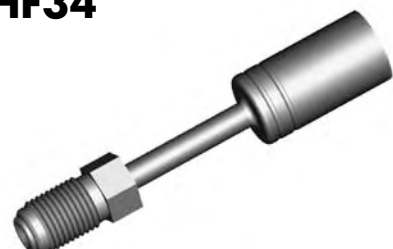
HF33



Swivel 45°

THREAD	FLARE	TUBE SIZE	OAL	FITS
3/8"NF	Double	3/16"	65mm	V

HF34



Swivel

THREAD	FLARE	TUBE SIZE	OAL	FITS
M10 x 1	Double	3/16"	71mm	V

HF39



Swivel

THREAD	FLARE	TUBE SIZE	OAL	FITS
7/16"NS	Double	1/4"	54mm	V

HF52



Swivel

THREAD	FLARE	TUBE SIZE	OAL	FITS
M10 x 1	DIN	3/16"	57mm	US

MALE SWIVEL

A = Asian

EU = European

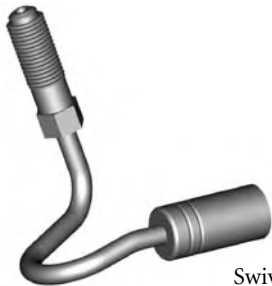
US = United States

UNI = Universal

V = Various

MISCELLANEOUS HOSE FITTINGS

HF53



Swivel

THREAD	FLARE	TUBE SIZE	OAL	FITS
M10 x 1	DIN	3/16"	57mm	US

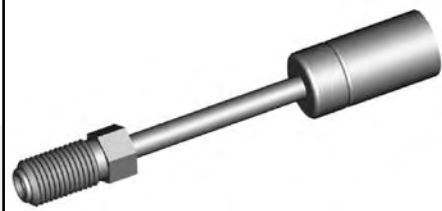
HF54



Swivel

THREAD	FLARE	TUBE SIZE	OAL	FITS
3/8"NF	Double	3/16"	125mm	US

HF63



Swivel

THREAD	FLARE	TUBE SIZE	OAL	FITS
3/8"NF	Double	3/16"	88mm	V

HF77



Swivel

THREAD	FLARE	TUBE SIZE	OAL	FITS
M12 x 1	DIN	1/4"	57mm	V

HF81



Swivel

THREAD	FLARE	TUBE SIZE	OAL	FITS
3/8"NF	Bubble	3/16"	76mm	V

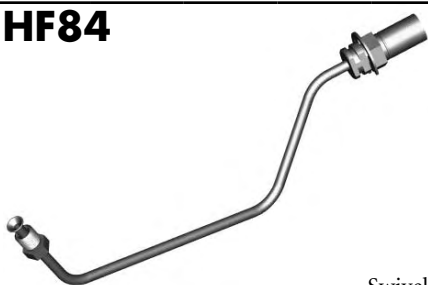
HF82



Swivel

THREAD	FLARE	TUBE SIZE	OAL	FITS
M10x1	DIN	3/16"	71mm	V

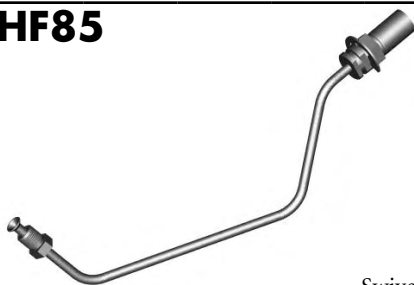
HF84



Swivel

THREAD	FLARE	TUBE SIZE	OAL	FITS
3/8"NF	Double	3/16"		US

HF85



Swivel

THREAD	FLARE	TUBE SIZE	OAL	FITS
3/8"NF	Double	3/16"		US

HF89



Swivel

THREAD	FLARE	TUBE SIZE	OAL	FITS
7/16"NS	Double	1/4"	120mm	US

HF92



Swivel 90°

THREAD	FLARE	TUBE SIZE	OAL	FITS
1/2"NF	Double	3/16"		US

HF93



Swivel

THREAD	FLARE	TUBE SIZE	OAL	FITS
1/2"NF	Double	3/16"		US

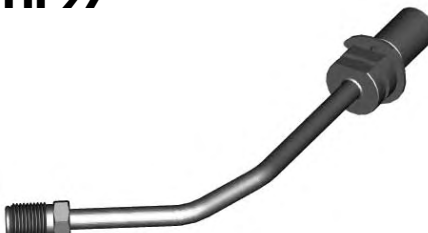
HF94



Swivel 60°

THREAD	FLARE	TUBE SIZE	OAL	FITS
7/16"NS	Double	1/4"		US

HF97



Swivel

THREAD	FLARE	TUBE SIZE	OAL	FITS
7/16"NS	Double	1/4"		US

HF98



Swivel 90°

THREAD	FLARE	TUBE SIZE	OAL	FITS
9/16"NF	Double	1/4"		US

HF99



Swivel 95°

THREAD	FLARE	TUBE SIZE	OAL	FITS
M10 x 1	DIN	3/16"		US

MALE SWIVEL

A = Asian

EU = European

US = United States

UNI = Universal

V = Various

MISCELLANEOUS HOSE FITTINGS

MALE SWIVEL

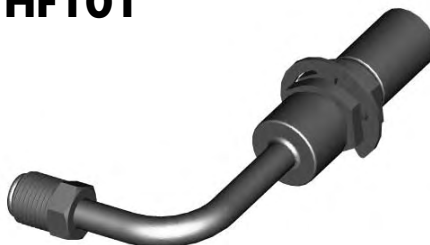
HF100



Swivel

THREAD	FLARE	TUBE SIZE	OAL	FITS
7/16"NS	Double	1/4"	81mm	US

HF101



Swivel 90°

THREAD	FLARE	TUBE SIZE	OAL	FITS
7/16"NS	Double	1/4"		US

HF09



Swivel
No. 3 JIC

THREAD	FLARE	TUBE SIZE	OAL	FITS
3/8"NF	37° Double	3/16"	58mm	V

HF10



Swivel 45°
No. 3 JIC

THREAD	FLARE	TUBE SIZE	OAL	FITS
3/8"NF	37° Double	3/16"	52mm	V

HF11



Swivel 90°
No. 3 JIC

THREAD	FLARE	TUBE SIZE	OAL	FITS
3/8"NF	37° Double	3/16"	45mm	V

FEMALE SWIVEL

HF12



Swivel
No. 4 JIC

THREAD	FLARE	TUBE SIZE	OAL	FITS
7/16"NF	37° Double	1/4"	50mm	V

HF13



Swivel 45°
No. 4 JIC

THREAD	FLARE	TUBE SIZE	OAL	FITS
7/16"NF	37° Double	1/4"	56mm	V

HF14



Swivel 90°
No. 4 JIC

THREAD	FLARE	TUBE SIZE	OAL	FITS
7/16"NF	37° Double	1/4"	48mm	V

HF61



Swivel
No. 2 JIC

THREAD	FLARE	TUBE SIZE	OAL	FITS
5/16"NF	37° Double		35mm	V

HF102



Swivel

THREAD	FLARE	TUBE SIZE	OAL	FITS
M12 x 1	Double	1/4"	50mm	V

A = Asian

EU = European

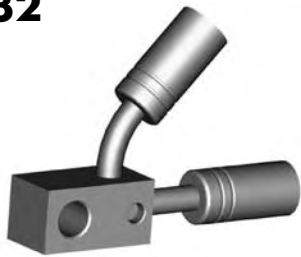
US = United States

UNI = Universal

V = Various

MISCELLANEOUS HOSE FITTINGS

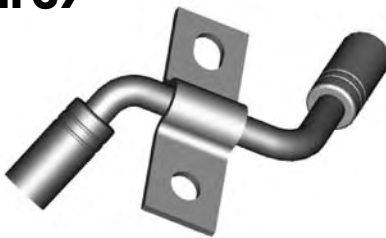
HF32



8.75mm Hole

THREAD	FLARE	TUBE SIZE	OAL	FITS
		1/4"	75mm	A

HF37



THREAD	FLARE	TUBE SIZE	OAL	FITS
		8mm	86mm	A

HF38



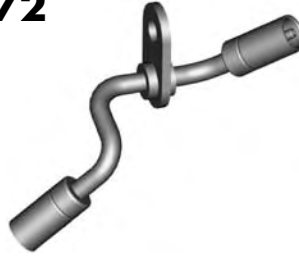
THREAD	FLARE	TUBE SIZE	OAL	FITS
		8mm	86mm	A

HF71



THREAD	FLARE	TUBE SIZE	OAL	FITS
			130mm	A

HF72



THREAD	FLARE	TUBE SIZE	OAL	FITS
			130mm	A

HF73



THREAD	FLARE	TUBE SIZE	OAL	FITS
			95mm	A

HF74



THREAD	FLARE	TUBE SIZE	OAL	FITS
			95mm	A

HF300



THREAD	FLARE	TUBE SIZE	OAL	FITS
			190mm	US

HF301



THREAD	FLARE	TUBE SIZE	OAL	FITS
			190mm	US

HF35



THREAD	FLARE	TUBE SIZE	OAL	FITS
			43mm	US

HF62



THREAD	FLARE	TUBE SIZE	OAL	FITS
			35mm	US

HF83



O-Ring Included

THREAD	FLARE	TUBE SIZE	OAL	FITS
			35mm	US

HF30



For 3/16" Tube

THREAD	FLARE	TUBE SIZE	OAL	FITS
		3/16"	48mm	UNI

HF31



For 1/4" Tube

THREAD	FLARE	TUBE SIZE	OAL	FITS
		1/4"	51mm	UNI

CENTER JOINER

CLUTCH SPECIAL

COMPRESSION

A = Asian

EU = European

US = United States

UNI = Universal

V = Various

MISCELLANEOUS HOSE FITTINGS

LIFESAVER

HF01



THREAD	FLARE	TUBE SIZE	OAL	FITS
		3/16"	27mm	UNI

HF05



Center Support Lifesaver

THREAD	FLARE	TUBE SIZE	OAL	FITS
			25mm	UNI

HF26



THREAD	FLARE	TUBE SIZE	OAL	FITS
		1/4"	27mm	UNI

HF27



THREAD	FLARE	TUBE SIZE	OAL	FITS
		5/16"	27mm	UNI

UNIVERSAL

HF02



THREAD	FLARE	TUBE SIZE	OAL	FITS
		3/16"	100mm	UNI

HF03



THREAD	FLARE	TUBE SIZE	OAL	FITS
		1/4"	100mm	UNI

A = Asian

EU = European

US = United States

UNI = Universal

V = Various

BANJO FITTINGS

HFB01



HOLE	THICK	WIDTH	ANGLE	OAL	FITS
10mm	8mm	17mm	-	54mm	V

HFB02



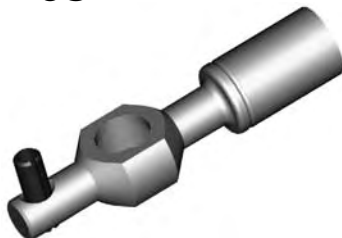
HOLE	THICK	WIDTH	ANGLE	OAL	FITS
10mm	10mm	18mm	-	64mm	A

HFB03



HOLE	THICK	WIDTH	ANGLE	OAL	FITS
10mm	8mm	17mm	-	66mm	A

HFB05



HOLE	THICK	WIDTH	ANGLE	OAL	FITS
10mm	10mm	17mm	-	65mm	A

HFB09



HOLE	THICK	WIDTH	ANGLE	OAL	FITS
10mm	10mm	18mm	-	55mm	V

HFB15



HOLE	THICK	WIDTH	ANGLE	OAL	FITS
10mm	10mm	23mm	-	52mm	A

HFB19



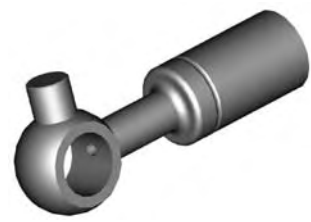
HOLE	THICK	WIDTH	ANGLE	OAL	FITS
15mm	13.5mm	25mm	-	45mm	US

HFB27



HOLE	THICK	WIDTH	ANGLE	OAL	FITS
8mm	6mm	14mm	-	53mm	V

HFB28



HOLE	THICK	WIDTH	ANGLE	OAL	FITS
10mm	10mm	22mm	-	54mm	A

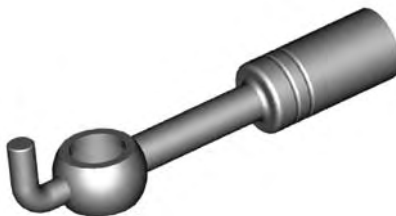
HFB34



Bendable

HOLE	THICK	WIDTH	ANGLE	OAL	FITS
10mm	8mm	17mm	-	69mm	UNI

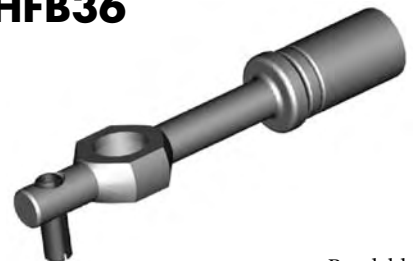
HFB35



Bendable

HOLE	THICK	WIDTH	ANGLE	OAL	FITS
10mm	10mm	17mm	-	80mm	UNI

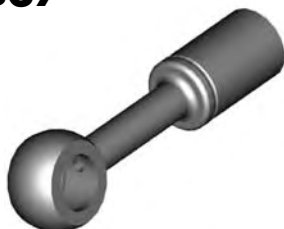
HFB36



Bendable

HOLE	THICK	WIDTH	ANGLE	OAL	FITS
10mm	8mm	17mm	-	84mm	UNI

HFB37



Bendable

HOLE	THICK	WIDTH	ANGLE	OAL	FITS
10mm	10mm	18mm	-	64mm	UNI

HFB47



HOLE	THICK	WIDTH	ANGLE	OAL	FITS
12mm	10mm	19mm	-	55mm	V

HFB50



Right

HOLE	THICK	WIDTH	ANGLE	OAL	FITS
10mm	10mm	28mm	-	50mm	US

ROUND STYLE - STRAIGHT

A = Asian

EU = European

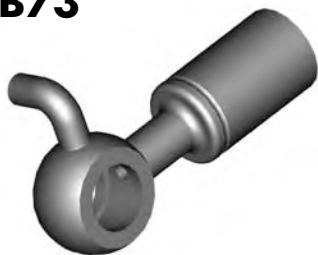
US = United States

UNI = Universal

V = Various

BANJO FITTINGS

HFB73



Left

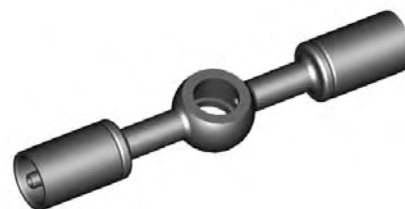
HOLE	THICK	WIDTH	ANGLE	OAL	FITS
10mm	10mm	28mm	-	50mm	US

HFB111



HOLE	THICK	WIDTH	ANGLE	OAL	FITS
8mm	13mm	21mm	-	40mm	US

HFB194



HOLE	THICK	WIDTH	ANGLE	OAL	FITS
10mm	10mm	18mm	-	92mm	V

HFB288



HOLE	THICK	WIDTH	ANGLE	OAL	FITS
10mm	8mm	17mm	-	61mm	A

HFB289



HOLE	THICK	WIDTH	ANGLE	OAL	FITS
10mm	10mm	-	-	-	V

HFB344



HOLE	THICK	WIDTH	ANGLE	OAL	FITS
10mm	10mm	-	-	58mm	A

HFB350



HOLE	THICK	WIDTH	ANGLE	OAL	FITS
10mm	10mm	-	-	45mm	A

HFB351



Left

HOLE	THICK	WIDTH	ANGLE	OAL	FITS
10mm	10mm	-	-	55mm	A

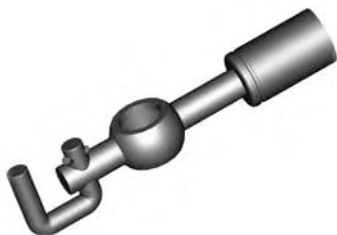
HFB352



Right

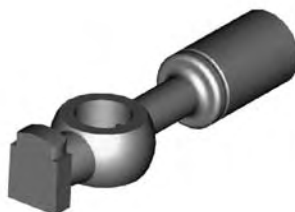
HOLE	THICK	WIDTH	ANGLE	OAL	FITS
10mm	10mm	-	-	55mm	A

HFB365



HOLE	THICK	WIDTH	ANGLE	OAL	FITS
10mm	8mm	17mm	-	63mm	A

HFB375



HOLE	THICK	WIDTH	ANGLE	OAL	FITS
10mm	10mm	18mm	-	65mm	EU

ROUND STYLE - STRAIGHT

A = Asian

EU = European

US = United States

UNI = Universal

V = Various

BANJO FITTINGS

HFB24



Left

HOLE	THICK	WIDTH	ANGLE	OAL	FITS
10mm	8mm	17mm	75°	64mm	A

HFB29



HOLE	THICK	WIDTH	ANGLE	OAL	FITS
10mm	10mm	28mm	40°	52mm	US

HFB30



Right

HOLE	THICK	WIDTH	ANGLE	OAL	FITS
10mm	10mm	17mm	90°	52mm	A

HFB31



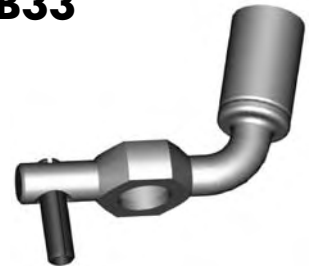
HOLE	THICK	WIDTH	ANGLE	OAL	FITS
10mm	10mm	17mm	25°	68mm	A

HFB32



HOLE	THICK	WIDTH	ANGLE	OAL	FITS
10mm	8mm	17mm	90°	39mm	V

HFB33



HOLE	THICK	WIDTH	ANGLE	OAL	FITS
10mm	8mm	17mm	75°	60mm	A

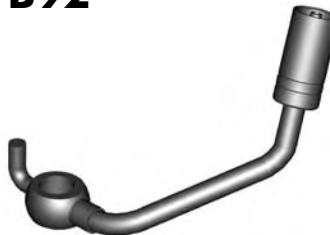
HFB75



Left

HOLE	THICK	WIDTH	ANGLE	OAL	FITS
10mm	10mm	17mm	90°	61mm	A

HFB92



Left

HOLE	THICK	WIDTH	ANGLE	OAL	FITS
10mm	10mm	18mm	55°	90mm	A

HFB93



Right

HOLE	THICK	WIDTH	ANGLE	OAL	FITS
10mm	10mm	18mm	55°	90mm	A

HFB105



Left

HOLE	THICK	WIDTH	ANGLE	OAL	FITS
3/8"	1/2"	21mm	25°	113mm	US

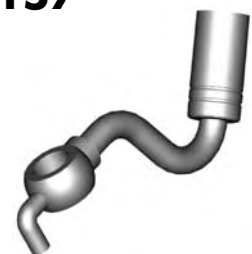
HFB106



Right

HOLE	THICK	WIDTH	ANGLE	OAL	FITS
3/8"	1/2"	21mm	25°	113mm	US

HFB157



HOLE	THICK	WIDTH	ANGLE	OAL	FITS
10mm	10mm	18mm	70°	102mm	A

HFB158



Left

HOLE	THICK	WIDTH	ANGLE	OAL	FITS
7/16"	15mm	35mm	35°	57mm	US

HFB159



Right

HOLE	THICK	WIDTH	ANGLE	OAL	FITS
7/16"	15mm	35mm	35°	57mm	US

HFB164



Right

HOLE	THICK	WIDTH	ANGLE	OAL	FITS
10mm	8mm	17mm	75°	64mm	A

ROUND STYLE - BENT

A = Asian

EU = European

US = United States

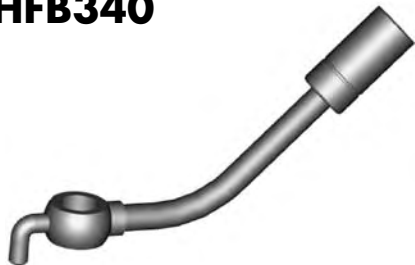
UNI = Universal

V = Various

BANJO FITTINGS

ROUND STYLE - BENT

HFB340



HOLE	THICK	WIDTH	ANGLE	OAL	FITS
10mm	10mm	18mm	45°	100mm	A

HFB341



HOLE	THICK	WIDTH	ANGLE	OAL	FITS
10mm	10mm	18mm	75°	55mm	A

HFB342



Right

HOLE	THICK	WIDTH	ANGLE	OAL	FITS
10mm	8mm	17mm	15°	60mm	A

HFB343



Left

HOLE	THICK	WIDTH	ANGLE	OAL	FITS
10mm	8mm	17mm	15°	60mm	A

HFB345



Left

HOLE	THICK	WIDTH	ANGLE	OAL	FITS
10mm	10mm	18mm	50°	45mm	A

HFB346



Right

HOLE	THICK	WIDTH	ANGLE	OAL	FITS
10mm	10mm	18mm	50°	45mm	A

HFB348



Left

HOLE	THICK	WIDTH	ANGLE	OAL	FITS
10mm	15mm	18mm	30°	50mm	A

HFB349



Right

HOLE	THICK	WIDTH	ANGLE	OAL	FITS
10mm	15mm	18mm	30°	50mm	A

HFB353



Right

HOLE	THICK	WIDTH	ANGLE	OAL	FITS
10mm	8mm	18mm	75°	60mm	A

HFB354



Left

HOLE	THICK	WIDTH	ANGLE	OAL	FITS
10mm	8mm	18mm	75°	60mm	A

HFB356



Left

HOLE	THICK	WIDTH	ANGLE	OAL	FITS
10mm	8mm	18mm	40°	60mm	A

HFB357



Right

HOLE	THICK	WIDTH	ANGLE	OAL	FITS
10mm	8mm	18mm	40°	60mm	A

HFB358



Left

HOLE	THICK	WIDTH	ANGLE	OAL	FITS
10mm	8mm	17mm	75°	45mm	A

HFB359



Right

HOLE	THICK	WIDTH	ANGLE	OAL	FITS
10mm	8mm	17mm	75°	45mm	A

HFB360



Right

HOLE	THICK	WIDTH	ANGLE	OAL	FITS
10mm	8mm	18mm	55°	65mm	A

A = Asian

EU = European

US = United States

UNI = Universal

V = Various

BANJO FITTINGS

HFB361



Left

HOLE	THICK	WIDTH	ANGLE	OAL	FITS
10mm	8mm	18mm	55°	65mm	A

HFB362



Left

HOLE	THICK	WIDTH	ANGLE	OAL	FITS
10mm	8mm	18mm	80°	45mm	A

HFB363



Right

HOLE	THICK	WIDTH	ANGLE	OAL	FITS
10mm	8mm	18mm	80°	45mm	A

HFB364



HOLE	THICK	WIDTH	ANGLE	OAL	FITS
10mm	8mm	18mm	75°	50mm	A

HFB366



HOLE	THICK	WIDTH	ANGLE	OAL	FITS
10mm	8mm	17mm	20°	—	A

HFB372



HOLE	THICK	WIDTH	ANGLE	OAL	FITS
10mm	10mm	18mm	60°	45mm	A

HFB373



HOLE	THICK	WIDTH	ANGLE	OAL	FITS
10mm	10mm	18mm	55°	65mm	A

HFB389



Right

HOLE	THICK	WIDTH	ANGLE	OAL	FITS
10mm	8mm	17mm	45°	75mm	A

HFB390



Left

HOLE	THICK	WIDTH	ANGLE	OAL	FITS
10mm	8mm	17mm	45°	75mm	A

ROUND STYLE - BENT

A = Asian

EU = European

US = United States

UNI = Universal

V = Various

BANJO FITTINGS

HFB07



Right

HOLE	THICK	WIDTH	ANGLE	OAL	FITS
10mm	16mm	22mm	27°	59mm	A

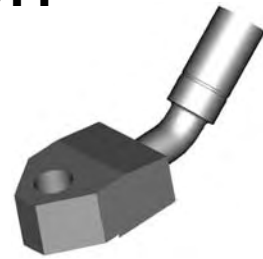
HFB08



Left

HOLE	THICK	WIDTH	ANGLE	OAL	FITS
10mm	16mm	22mm	27°	59mm	A

HFB11



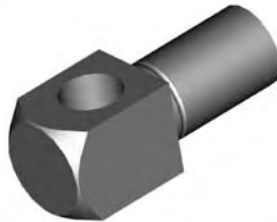
HOLE	THICK	WIDTH	ANGLE	OAL	FITS
10mm	16mm	28mm	40°	92mm	A

HFB12



HOLE	THICK	WIDTH	ANGLE	OAL	FITS
10mm	11.5mm	20mm	10°	46mm	V

HFB13



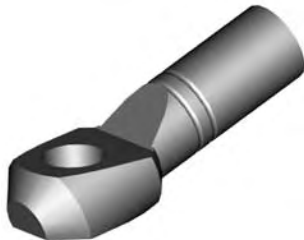
HOLE	THICK	WIDTH	ANGLE	OAL	FITS
10mm	16mm	16mm	—	42mm	V

HFB14



HOLE	THICK	WIDTH	ANGLE	OAL	FITS
10mm	13mm	20mm	20°	55mm	US

HFB16



HOLE	THICK	WIDTH	ANGLE	OAL	FITS
10mm	10.4mm	19mm	20°	54mm	EU

HFB38



HOLE	THICK	WIDTH	ANGLE	OAL	FITS
16mm	14mm	22.2mm	—	44mm	US

HFB40



HOLE	THICK	WIDTH	ANGLE	OAL	FITS
10mm	11.3mm	19mm	—	42mm	US

HFB41



HOLE	THICK	WIDTH	ANGLE	OAL	FITS
7/16"	14mm	48mm	20°	50mm	US

HFB45



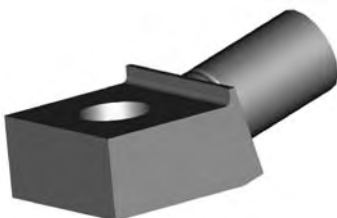
HOLE	THICK	WIDTH	ANGLE	OAL	FITS
10mm	11mm	19.6mm	10°	47mm	US

HFB46



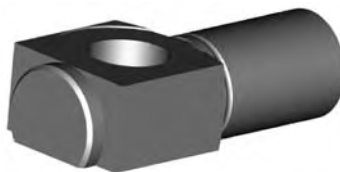
HOLE	THICK	WIDTH	ANGLE	OAL	FITS
10mm	11mm	17.6mm	10°	44mm	US

HFB48



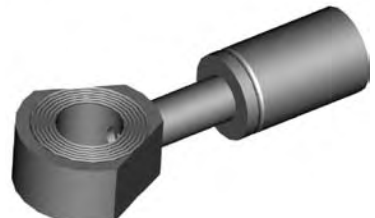
HOLE	THICK	WIDTH	ANGLE	OAL	FITS
7/16"	1/2"	25.5mm	15°	49mm	US

HFB49



HOLE	THICK	WIDTH	ANGLE	OAL	FITS
10mm	11.3mm	19mm	—	44mm	US

HFB53



HOLE	THICK	WIDTH	ANGLE	OAL	FITS
10mm	10mm	22mm	—	57mm	US

BLOCK STYLE

A = Asian

EU = European

US = United States

UNI = Universal

V = Various

BANJO FITTINGS

HFB54



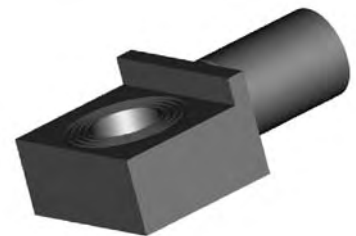
HOLE	THICK	WIDTH	ANGLE	OAL	FITS
7/16"	11mm	19mm		43mm	US

HFB55



HOLE	THICK	WIDTH	ANGLE	OAL	FITS
7/16"	1/2"	25mm	-	47mm	US

HFB56



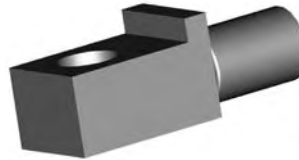
HOLE	THICK	WIDTH	ANGLE	OAL	FITS
10mm	11.7mm	26mm		45mm	US

HFB57



HOLE	THICK	WIDTH	ANGLE	OAL	FITS
10mm	11.6mm	33mm	-	49mm	US

HFB59



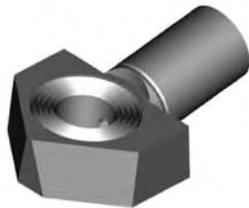
HOLE	THICK	WIDTH	ANGLE	OAL	FITS
7/16"	14.8mm	19.5mm	-	52mm	US

HFB60



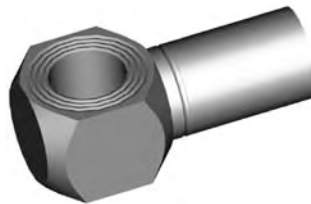
HOLE	THICK	WIDTH	ANGLE	OAL	FITS
7/16"	11.5mm	20mm	10°	46mm	V

HFB62



HOLE	THICK	WIDTH	ANGLE	OAL	FITS
10mm	11mm	28mm	10°	44mm	US

HFB66



HOLE	THICK	WIDTH	ANGLE	OAL	FITS
7/16"	14.7mm	19mm	-	41mm	US

HFB67



HOLE	THICK	WIDTH	ANGLE	OAL	FITS
3/8"	1/2"	28mm	-	48mm	US

HFB72



HOLE	THICK	WIDTH	ANGLE	OAL	FITS
7/16"	11mm	19mm	10°	42mm	US

HFB81



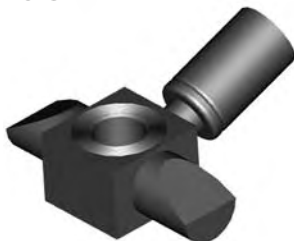
HOLE	THICK	WIDTH	ANGLE	OAL	FITS
10mm	23mm	16mm	50°	46mm	A

HFB84



HOLE	THICK	WIDTH	ANGLE	OAL	FITS
7/16"	11mm	19.8mm	25°	50mm	US

HFB85



HOLE	THICK	WIDTH	ANGLE	OAL	FITS
10mm	14.7mm	48mm	20°	50mm	US

HFB91



HOLE	THICK	WIDTH	ANGLE	OAL	FITS
10mm	11.4mm	20mm	-	42mm	US

HFB100



HOLE	THICK	WIDTH	ANGLE	OAL	FITS
10mm	8mm	17mm	-	51mm	EU

BLOCK STYLE

A = Asian

EU = European

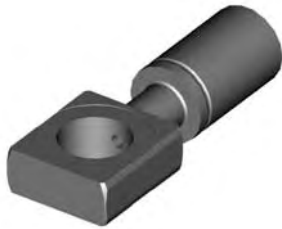
US = United States

UNI = Universal

V = Various

BANJO FITTINGS

HFB101



HOLE	THICK	WIDTH	ANGLE	OAL	FITS
12mm	8mm	19mm	-	51mm	EU

HFB112



HOLE	THICK	WIDTH	ANGLE	OAL	FITS
8mm	14mm	17mm	35°	50mm	US

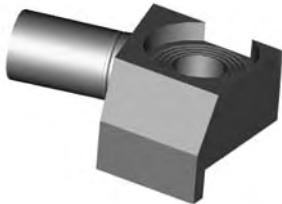
HFB133



Right

HOLE	THICK	WIDTH	ANGLE	OAL	FITS
10mm	11mm	26mm	-	90mm	US

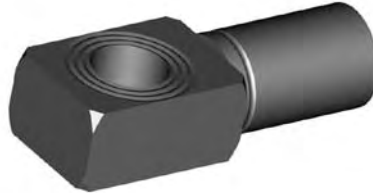
HFB134



Left

HOLE	THICK	WIDTH	ANGLE	OAL	FITS
10mm	11mm	26mm	-	50mm	US

HFB144



HOLE	THICK	WIDTH	ANGLE	OAL	FITS
10mm	11.5mm	17mm	-	46mm	V

HFB145



HOLE	THICK	WIDTH	ANGLE	OAL	FITS
12mm	8mm	19mm	-	61mm	EU

HFB146



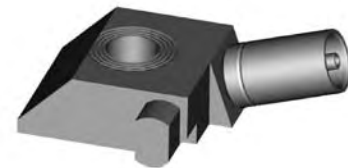
HOLE	THICK	WIDTH	ANGLE	OAL	FITS
12mm	11.5mm	20mm	10°	50mm	EU

HFB149



HOLE	THICK	WIDTH	ANGLE	OAL	FITS
10mm	24mm	16mm	50°	55mm	A

HFB165



Left

HOLE	THICK	WIDTH	ANGLE	OAL	FITS
7/16"	14.7mm	32.5mm	20°	65mm	US

HFB166



Right

HOLE	THICK	WIDTH	ANGLE	OAL	FITS
7/16"	14.7mm	32.5mm	20°	65mm	US

HFB187



HOLE	THICK	WIDTH	ANGLE	OAL	FITS
10mm	8mm	19mm	-	61mm	EU

HFB230



Right

HOLE	THICK	WIDTH	ANGLE	OAL	FITS
3/8"	7/16"	22mm	10°	45mm	US

HFB231



Left

HOLE	THICK	WIDTH	ANGLE	OAL	FITS
3/8"	7/16"	22mm	10°	45mm	US

HFB243



HOLE	THICK	WIDTH	ANGLE	OAL	FITS
3/8"	14.9mm	20.5mm	-	42mm	US

HFB283



HOLE	THICK	WIDTH	ANGLE	OAL	FITS
3/8"	14.7mm	20mm	-	42mm	US

BLOCK STYLE

A = Asian

EU = European

US = United States

UNI = Universal

V = Various

BANJO FITTINGS

HFB286



HOLE	THICK	WIDTH	ANGLE	OAL	FITS
10mm	11.5	22.4mm	-	-	US

HFB300



HOLE	THICK	WIDTH	ANGLE	OAL	FITS
10mm	11.4mm	17mm	15°	50mm	A

HFB384



HOLE	THICK	WIDTH	ANGLE	OAL	FITS
3/8"	1/2"	25.4mm		45mm	US

BLOCK STYLE

HFB403



HOLE	THICK	WIDTH	ANGLE	OAL	FITS
10mm	11.5	26mm	-	-	US

A = Asian

EU = European

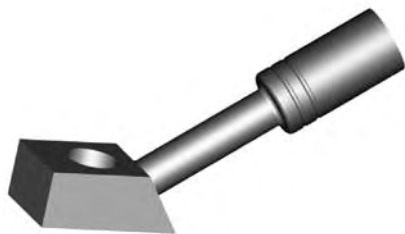
US = United States

UNI = Universal

V = Various

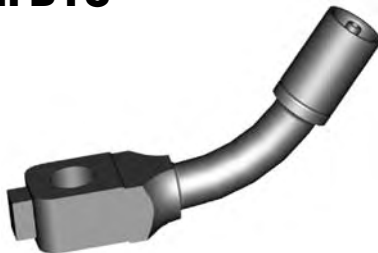
BANJO FITTINGS

HFB17



HOLE	THICK	WIDTH	ANGLE	OAL	FITS
10mm	11.5mm	17mm	35°	78mm	V

HFB18



HOLE	THICK	WIDTH	ANGLE	OAL	FITS
10mm	13mm	18mm	50°	78mm	A

HFB21



HOLE	THICK	WIDTH	ANGLE	OAL	FITS
10mm	11.5mm	17mm	50°	72mm	V

HFB39



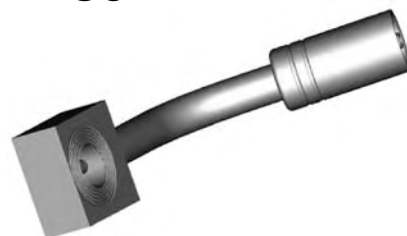
HOLE	THICK	WIDTH	ANGLE	OAL	FITS
3/8"	1/2"	19.2mm	15°	104mm	US

HFB51



HOLE	THICK	WIDTH	ANGLE	OAL	FITS
10mm	11mm	22.2mm	55°	75mm	US

HFB58



HOLE	THICK	WIDTH	ANGLE	OAL	FITS
3/8"	7/16"	22.2mm	65°	80mm	US

HFB61



HOLE	THICK	WIDTH	ANGLE	OAL	FITS
7/16"	14.6mm	22.2mm	105°	60mm	US

HFB80



HOLE	THICK	WIDTH	ANGLE	OAL	FITS
7/16"	15mm	20mm	30°	110mm	US

HFB90



HOLE	THICK	WIDTH	ANGLE	OAL	FITS
3/8"	7/16"	19mm	35°	75mm	US

HFB98



HOLE	THICK	WIDTH	ANGLE	OAL	FITS
3/8"	1/2"	25mm	25°	120mm	US

HFB148



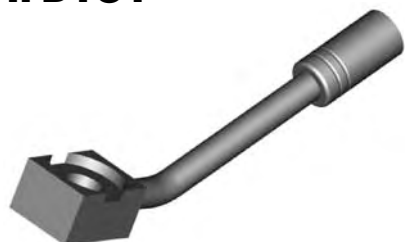
HOLE	THICK	WIDTH	ANGLE	OAL	FITS
3/8"	1/2"	25mm	85°	131mm	US

HFB160



HOLE	THICK	WIDTH	ANGLE	OAL	FITS
10mm	11mm	20mm	25°	127mm	US

HFB161



HOLE	THICK	WIDTH	ANGLE	OAL	FITS
10mm	11.5mm	20mm	30°	121mm	US

HFB173



HOLE	THICK	WIDTH	ANGLE	OAL	FITS
10mm	12mm	22.2mm	50°	118mm	US

HFB180



HOLE	THICK	WIDTH	ANGLE	OAL	FITS
10mm	11mm	19.5mm	30°	65mm	US

TUBE STYLE - EITHER SIDE

A = Asian

EU = European

US = United States

UNI = Universal

V = Various

BANJO FITTINGS

HFB182



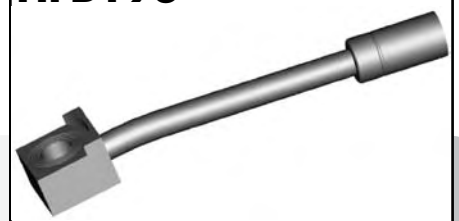
HOLE	THICK	WIDTH	ANGLE	OAL	FITS
3/8"	1/2"	22.2mm		165mm	US

HFB188



HOLE	THICK	WIDTH	ANGLE	OAL	FITS
3/8"	12.5mm	40mm	90°	116mm	US

HFB193



HOLE	THICK	WIDTH	ANGLE	OAL	FITS
3/8"	1/2"	23mm	10°	110mm	US

HFB203



HOLE	THICK	WIDTH	ANGLE	OAL	FITS
3/8"	11mm	25mm	35°	75mm	US

HFB211



HOLE	THICK	WIDTH	ANGLE	OAL	FITS
3/8"	1/2"	22mm	—	175mm	US

HFB251



HOLE	THICK	WIDTH	ANGLE	OAL	FITS
10mm	12.6mm	19.6mm	90°	80mm	US

HFB276



HOLE	THICK	WIDTH	ANGLE	OAL	FITS
7/16"	14.7mm	22.2mm	90°	65mm	US

HFB309



HOLE	THICK	WIDTH	ANGLE	OAL	FITS
10mm	11.5mm	17mm	15°	62mm	V

HFB310



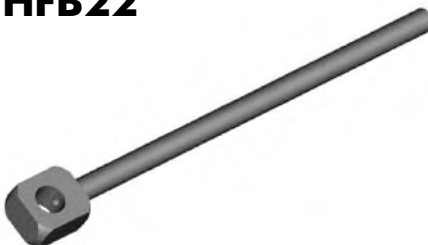
HOLE	THICK	WIDTH	ANGLE	OAL	FITS
10mm	11.5mm	19mm	10°	82mm	V

HFB379



HOLE	THICK	WIDTH	ANGLE	OAL	FITS
12mm	8.5mm	19mm	30°	60mm	EU

HFB22



HOLE	THICK	WIDTH	ANGLE	OAL	FITS
10mm	11.5mm	19mm	—	172mm	UNI

HFB23



HOLE	THICK	WIDTH	ANGLE	OAL	FITS
7/16"	1/2"	19mm	—	172mm	UNI

TUBE STYLE - EITHER SIDE

UNIVERSAL

A = Asian

EU = European

US = United States

UNI = Universal

V = Various

BANJO FITTINGS

HFB42



Left

HOLE	THICK	WIDTH	ANGLE	OAL	FITS
10mm	12mm	19.6mm	60°	130mm	US

HFB43



Right

HOLE	THICK	WIDTH	ANGLE	OAL	FITS
10mm	12mm	19.6mm	60°	130mm	US

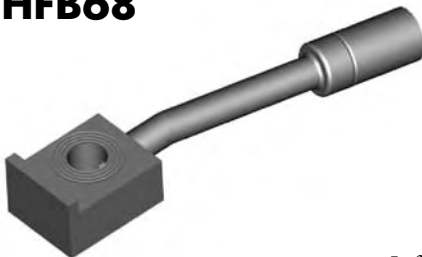
HFB52



Right

HOLE	THICK	WIDTH	ANGLE	OAL	FITS
10mm	11mm	28.6mm	107°	145mm	US

HFB68



Left

HOLE	THICK	WIDTH	ANGLE	OAL	FITS
3/8"	1/2"	22.4mm	7°	110mm	US

HFB69



Right

HOLE	THICK	WIDTH	ANGLE	OAL	FITS
3/8"	1/2"	22.4mm	7°	110mm	US

HFB74



Left

HOLE	THICK	WIDTH	ANGLE	OAL	FITS
10mm	11mm	28.6mm	107°	145mm	US

HFB76



Left

HOLE	THICK	WIDTH	ANGLE	OAL	FITS
3/8"	1/2"	19.7mm	90°	143mm	US

HFB77



Right

HOLE	THICK	WIDTH	ANGLE	OAL	FITS
3/8"	1/2"	19.7mm	90°	143mm	US

HFB78



Left

HOLE	THICK	WIDTH	ANGLE	OAL	FITS
7/16"	11mm	22.2mm	90°	133mm	US

HFB79



Right

HOLE	THICK	WIDTH	ANGLE	OAL	FITS
7/16"	11mm	22.2mm	90°	133mm	US

HFB82



Right

HOLE	THICK	WIDTH	ANGLE	OAL	FITS
3/8"	1/2"	26mm	50°	147mm	US

HFB83



Left

HOLE	THICK	WIDTH	ANGLE	OAL	FITS
3/8"	1/2"	26mm	50°	147mm	US

HFB86



Left

HOLE	THICK	WIDTH	ANGLE	OAL	FITS
10mm	11.2mm	28.6mm	70°	175mm	US

HFB87



Right

HOLE	THICK	WIDTH	ANGLE	OAL	FITS
10mm	11.2mm	28.6mm	70°	175mm	US

HFB94



Right

HOLE	THICK	WIDTH	ANGLE	OAL	FITS
7/16"	11.6mm	20mm	90°	110mm	US

TUBE STYLE - LEFT / RIGHT

A = Asian

EU = European

US = United States

UNI = Universal

V = Various

BANJO FITTINGS

HFB95



Left

HOLE	THICK	WIDTH	ANGLE	OAL	FITS
7/16"	11.6mm	20mm	90°	110mm	US

HFB102



Right

HOLE	THICK	WIDTH	ANGLE	OAL	FITS
3/8"	1/2"	23mm	23°	140mm	US

HFB103



Left

HOLE	THICK	WIDTH	ANGLE	OAL	FITS
3/8"	1/2"	23mm	23°	140mm	US

HFB107



Right

HOLE	THICK	WIDTH	ANGLE	OAL	FITS
10mm	11.6mm	20mm	75°	86mm	US

HFB108



Left

HOLE	THICK	WIDTH	ANGLE	OAL	FITS
10mm	11.6mm	20mm	75°	86mm	US

HFB113



Right

HOLE	THICK	WIDTH	ANGLE	OAL	FITS
10mm	11.8mm	42mm	30°	130mm	US

HFB114



Left

HOLE	THICK	WIDTH	ANGLE	OAL	FITS
10mm	11.8mm	42mm	30°	130mm	US

HFB115



Right

HOLE	THICK	WIDTH	ANGLE	OAL	FITS
3/8"	1/2"	22.2mm	55°	112mm	US

HFB116



Left

HOLE	THICK	WIDTH	ANGLE	OAL	FITS
3/8"	1/2"	22.2mm	55°	112mm	US

HFB117



Left

HOLE	THICK	WIDTH	ANGLE	OAL	FITS
10mm	12mm	20mm	90°	50mm	US

HFB118



Right

HOLE	THICK	WIDTH	ANGLE	OAL	FITS
10mm	12mm	20mm	90°	50mm	US

HFB119



Right

HOLE	THICK	WIDTH	ANGLE	OAL	FITS
10mm	12mm	20mm	90°	60mm	US

HFB120



Left

HOLE	THICK	WIDTH	ANGLE	OAL	FITS
10mm	12mm	20mm	90°	60mm	US

HFB121



Right

HOLE	THICK	WIDTH	ANGLE	OAL	FITS
10mm	12.7mm	22.2mm	65°	127mm	US

HFB122



Left

HOLE	THICK	WIDTH	ANGLE	OAL	FITS
10mm	12.7mm	22.2mm	65°	127mm	US

TUBE STYLE - LEFT / RIGHT

A = Asian

EU = European

US = United States

UNI = Universal

V = Various

BANJO FITTINGS

HFB123



Left

HOLE	THICK	WIDTH	ANGLE	OAL	FITS
7/16"	14.8mm	22.2mm	85°	90mm	US

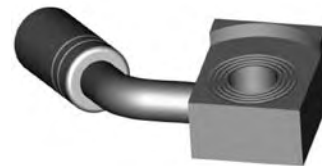
HFB124



Right

HOLE	THICK	WIDTH	ANGLE	OAL	FITS
7/16"	14.8mm	22.2mm	85°	90mm	US

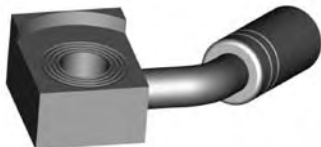
HFB125



Left

HOLE	THICK	WIDTH	ANGLE	OAL	FITS
3/8"	1/2"	25mm	55°	64mm	US

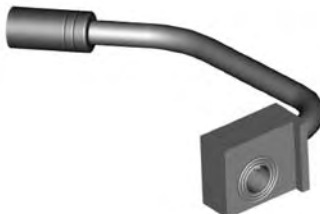
HFB126



Right

HOLE	THICK	WIDTH	ANGLE	OAL	FITS
3/8"	1/2"	25mm	55°	64mm	US

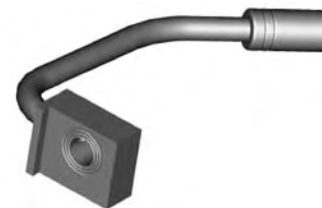
HFB127



Right

HOLE	THICK	WIDTH	ANGLE	OAL	FITS
3/8"	1/2"	25mm	90°	136mm	US

HFB128



Left

HOLE	THICK	WIDTH	ANGLE	OAL	FITS
3/8"	1/2"	25mm	90°	136mm	US

HFB129



Left

HOLE	THICK	WIDTH	ANGLE	OAL	FITS
3/8"	1/2"	25mm	85°	185mm	US

HFB130



Right

HOLE	THICK	WIDTH	ANGLE	OAL	FITS
3/8"	1/2"	25mm	85°	185mm	US

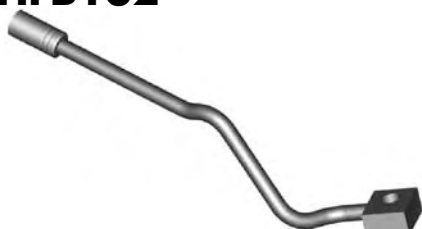
HFB131



Right

HOLE	THICK	WIDTH	ANGLE	OAL	FITS
3/8"	1/2"	25mm	30°	148mm	US

HFB132



Left

HOLE	THICK	WIDTH	ANGLE	OAL	FITS
3/8"	1/2"	25mm	30°	148mm	US

HFB135



Right

HOLE	THICK	WIDTH	ANGLE	OAL	FITS
3/8"	7/16"	22.2mm	10°	114mm	US

HFB136



Left

HOLE	THICK	WIDTH	ANGLE	OAL	FITS
3/8"	7/16"	22.2mm	10°	114mm	US

HFB142



Right

HOLE	THICK	WIDTH	ANGLE	OAL	FITS
10mm	11.8mm	22.2mm	75°	99mm	US

HFB143



Left

HOLE	THICK	WIDTH	ANGLE	OAL	FITS
10mm	11.8mm	22.2mm	75°	99mm	US

HFB155



Right

HOLE	THICK	WIDTH	ANGLE	OAL	FITS
3/8"	1/2"	25mm	70°	190mm	US

TUBE STYLE - LEFT / RIGHT

A = Asian

EU = European

US = United States

UNI = Universal

V = Various

BANJO FITTINGS

HFB156



Left

HOLE	THICK	WIDTH	ANGLE	OAL	FITS
3/8"	1/2"	25mm	70°	190mm	US

HFB174



Right

HOLE	THICK	WIDTH	ANGLE	OAL	FITS
3/8"	1/2"	22.2mm	90°	70mm	US

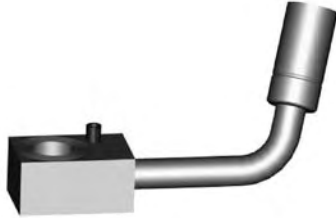
HFB175



Left

HOLE	THICK	WIDTH	ANGLE	OAL	FITS
3/8"	1/2"	22.2mm	90°	70mm	US

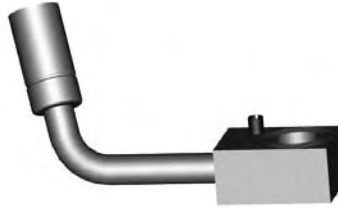
HFB176



Left

HOLE	THICK	WIDTH	ANGLE	OAL	FITS
7/16"	14.8mm	20.6mm	75°	70mm	US

HFB177



Right

HOLE	THICK	WIDTH	ANGLE	OAL	FITS
7/16"	14.8mm	20.6mm	75°	70mm	US

HFB183



Left

HOLE	THICK	WIDTH	ANGLE	OAL	FITS
10mm	11.7mm	22.2mm	70°	-	US

HFB184



Right

HOLE	THICK	WIDTH	ANGLE	OAL	FITS
10mm	11.7mm	22.2mm	70°		US

HFB185



Left

HOLE	THICK	WIDTH	ANGLE	OAL	FITS
3/8"	1/2"	25mm	75°	180mm	US

HFB186



Right

HOLE	THICK	WIDTH	ANGLE	OAL	FITS
3/8"	1/2"	25mm	75°	180mm	US

HFB189



Right

HOLE	THICK	WIDTH	ANGLE	OAL	FITS
7/16"	15mm	20mm	30°	90mm	US

HFB190



Left

HOLE	THICK	WIDTH	ANGLE	OAL	FITS
7/16"	15mm	20mm	30°	90mm	US

HFB201



Left

HOLE	THICK	WIDTH	ANGLE	OAL	FITS
7/16"	1/2"	22.2mm	55°	125mm	US

HFB202



Right

HOLE	THICK	WIDTH	ANGLE	OAL	FITS
7/16"	1/2"	22.2mm	55°	125mm	US

HFB209



Left

HOLE	THICK	WIDTH	ANGLE	OAL	FITS
3/8"	1/2"	23mm	90°	180mm	US

HFB210



Right

HOLE	THICK	WIDTH	ANGLE	OAL	FITS
3/8"	1/2"	23mm	90°	180mm	US

TUBE STYLE - LEFT / RIGHT

A = Asian

EU = European

US = United States

UNI = Universal

V = Various

BANJO FITTINGS

HFB214



HOLE	THICK	WIDTH	ANGLE	OAL	FITS
3/8"	1/2"	25.4mm	75°	–	US

HFB215



HOLE	THICK	WIDTH	ANGLE	OAL	FITS
3/8"	1/2"	25.4mm	75°	–	US

HFB216



HOLE	THICK	WIDTH	ANGLE	OAL	FITS
10mm	11.7mm	26mm	20°	–	US

HFB217



HOLE	THICK	WIDTH	ANGLE	OAL	FITS
3/8"	1/2"	25.4mm	90°	–	US

HFB218



HOLE	THICK	WIDTH	ANGLE	OAL	FITS
3/8"	1/2"	25.4mm	90°	–	US

HFB221



HOLE	THICK	WIDTH	ANGLE	OAL	FITS
3/8"	1/2"	25.5mm	90°	–	US

HFB222



HOLE	THICK	WIDTH	ANGLE	OAL	FITS
3/8"	1/2"	25.5mm	90°	–	US

HFB237



HOLE	THICK	WIDTH	ANGLE	OAL	FITS
7/16"	7/16"	22.2mm	90°	–	US

HFB238



HOLE	THICK	WIDTH	ANGLE	OAL	FITS
7/16"	7/16"	22.2mm	90°	–	US

HFB239



HOLE	THICK	WIDTH	ANGLE	OAL	FITS
10mm	11.7mm	22.2mm	55°	–	US

HFB240



HOLE	THICK	WIDTH	ANGLE	OAL	FITS
10mm	11.7mm	22.2mm	55°	–	US

HFB241



HOLE	THICK	WIDTH	ANGLE	OAL	FITS
10mm	11.7mm	22.2mm	50°	–	US

HFB242



HOLE	THICK	WIDTH	ANGLE	OAL	FITS
10mm	11.5mm	22.2mm	80°	–	US

HFB245



HOLE	THICK	WIDTH	ANGLE	OAL	FITS
10mm	11.7mm	22.2mm	85°	–	US

HFB246



HOLE	THICK	WIDTH	ANGLE	OAL	FITS
10mm	11.7mm	22.2mm	85°	–	US

TUBE STYLE - LEFT / RIGHT

A = Asian

EU = European

US = United States

UNI = Universal

V = Various

BANJO FITTINGS

HFB247



HOLE	THICK	WIDTH	ANGLE	OAL	FITS
10mm	11.7mm	22.2mm	30°	–	US

HFB248



HOLE	THICK	WIDTH	ANGLE	OAL	FITS
10mm	11.7mm	22.2mm	30°	–	US

HFB249



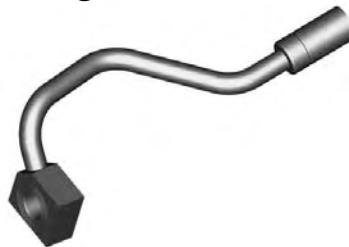
HOLE	THICK	WIDTH	ANGLE	OAL	FITS
10mm	11.7mm	22.2mm	50°	–	US

HFB250



HOLE	THICK	WIDTH	ANGLE	OAL	FITS
10mm	11.7mm	22.2mm	50°	–	US

HFB284



HOLE	THICK	WIDTH	ANGLE	OAL	FITS
10mm	11.5mm	24.4mm	75°	–	US

HFB285



HOLE	THICK	WIDTH	ANGLE	OAL	FITS
10mm	11.5mm	22.4mm	75°	–	US

HFB306



HOLE	THICK	WIDTH	ANGLE	OAL	FITS
3/8"	1/2"	26mm	70°	134mm	US

HFB307



HOLE	THICK	WIDTH	ANGLE	OAL	FITS
3/8"	1/2"	26mm	70°	134mm	US

HFB315



HOLE	THICK	WIDTH	ANGLE	OAL	FITS
3/8"	1/2"	22.2mm		195mm	US

HFB316



HOLE	THICK	WIDTH	ANGLE	OAL	FITS
3/8"	1/2"	22.2mm		195mm	US

HFB317



HOLE	THICK	WIDTH	ANGLE	OAL	FITS
3/8"	1/2"	22.2mm	65°	178mm	US

HFB318



HOLE	THICK	WIDTH	ANGLE	OAL	FITS
3/8"	1/2"	22.2mm	65°	178mm	US

HFB321



HOLE	THICK	WIDTH	ANGLE	OAL	FITS
3/8"	1/2"	24.4mm		105mm	US

HFB322



HOLE	THICK	WIDTH	ANGLE	OAL	FITS
3/8"	1/2"	24.4mm		105mm	US

HFB323



HOLE	THICK	WIDTH	ANGLE	OAL	FITS
3/8"	1/2"	23mm	90°	63mm	US

TUBE STYLE - LEFT / RIGHT

A = Asian

EU = European

US = United States

UNI = Universal

V = Various

BANJO FITTINGS

HFB324



Right

HOLE	THICK	WIDTH	ANGLE	OAL	FITS
3/8"	1/2"	23mm	90°	63mm	US

HFB328



Right

HOLE	THICK	WIDTH	ANGLE	OAL	FITS
10mm	11mm	22mm	110°	75mm	A

HFB329



Left

HOLE	THICK	WIDTH	ANGLE	OAL	FITS
10mm	11mm	22mm	110°	75mm	A

HFB332



Right

HOLE	THICK	WIDTH	ANGLE	OAL	FITS
10mm	11.7mm	22.2mm	90°	65mm	US

HFB333



Left

HOLE	THICK	WIDTH	ANGLE	OAL	FITS
10mm	11.7mm	22.2mm		95mm	US

HFB367



Left

HOLE	THICK	WIDTH	ANGLE	OAL	FITS
10mm	11mm	18mm	90°	60mm	A

HFB368



Right

HOLE	THICK	WIDTH	ANGLE	OAL	FITS
10mm	11mm	18mm	90°	60mm	A

HFB369



Left

HOLE	THICK	WIDTH	ANGLE	OAL	FITS
10mm	11mm	22mm	90°	60mm	A

HFB370



Right

HOLE	THICK	WIDTH	ANGLE	OAL	FITS
10mm	11mm	22mm	90°	60mm	A

HFB376



HOLE	THICK	WIDTH	ANGLE	OAL	FITS
10mm	11.5mm	17mm	55°	-	A

HFB377



HOLE	THICK	WIDTH	ANGLE	OAL	FITS
10mm	11.5mm	17mm	55°	-	A

HFB380



Left

HOLE	THICK	WIDTH	ANGLE	OAL	FITS
3/8"	7/16"	25.4mm	60°	165mm	US

HFB381



Right

HOLE	THICK	WIDTH	ANGLE	OAL	FITS
3/8"	7/16"	25.4mm	60°	165mm	US

HFB404



HOLE	THICK	WIDTH	ANGLE	OAL	FITS
10mm	11.7mm	22.2mm	125°	-	US

TUBE STYLE - LEFT / RIGHT

A = Asian

EU = European

US = United States

UNI = Universal

V = Various

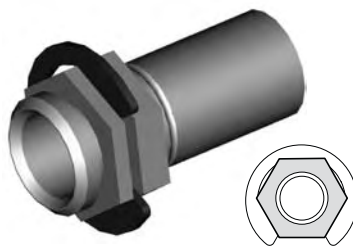
CENTER SUPPORT FITTINGS

HFC01



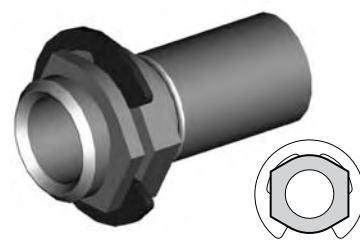
MATERIAL	WIDTH	OAL	FITS
Steel	17mm	33mm	A

HFC02



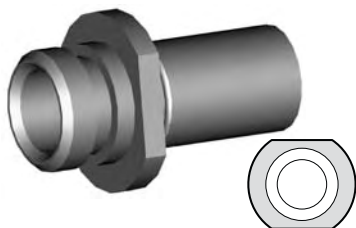
MATERIAL	WIDTH	OAL	FITS
Steel	17mm	34mm	A

HFC06



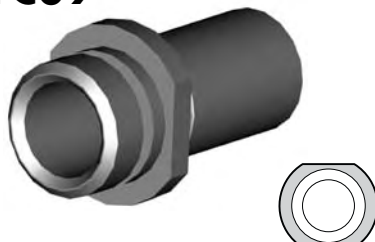
MATERIAL	WIDTH	OAL	FITS
Steel	17mm	34mm	A

HFC07



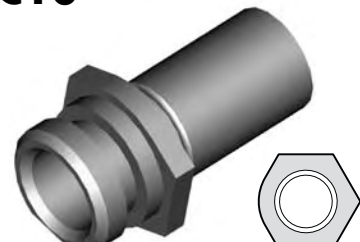
MATERIAL	WIDTH	OAL	FITS
Steel	19mm	35mm	A

HFC09



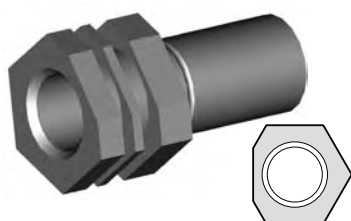
MATERIAL	WIDTH	OAL	FITS
Steel	17mm	34mm	A

HFC10



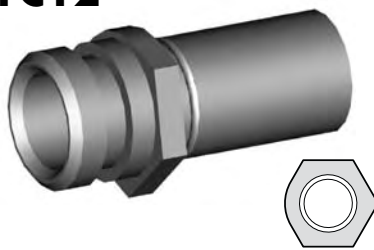
MATERIAL	WIDTH	OAL	FITS
Steel	19mm	35mm	A

HFC11



MATERIAL	WIDTH	OAL	FITS
Steel	19mm	37mm	A

HFC12



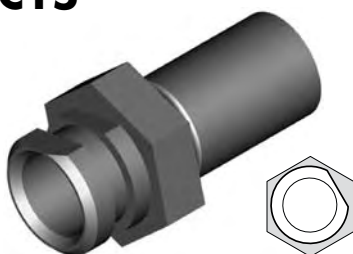
MATERIAL	WIDTH	OAL	FITS
Steel	17mm	35mm	A

HFC13



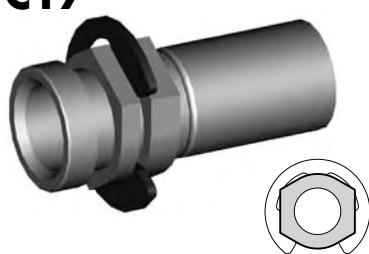
MATERIAL	WIDTH	OAL	FITS
Steel	17mm	33mm	A

HFC15



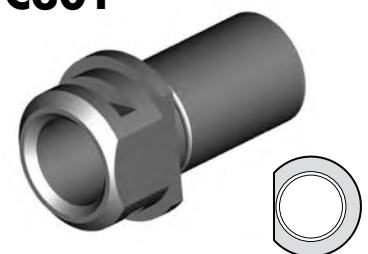
MATERIAL	WIDTH	OAL	FITS
Steel	19mm	37mm	A

HFC17



MATERIAL	WIDTH	OAL	FITS
Steel	16mm	37mm	US

HFC301



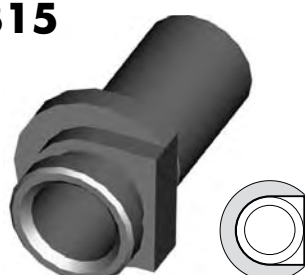
MATERIAL	WIDTH	OAL	FITS
Steel	20mm	33mm	EU

HFC307



MATERIAL	WIDTH	OAL	FITS
Steel	19mm	36mm	US

HFC315



MATERIAL	WIDTH	OAL	FITS
Steel	22mm	34mm	A

HFC327



MATERIAL	WIDTH	OAL	FITS
Steel	37mm	-	US

CLIP MOUNT

A = Asian

EU = European

US = United States

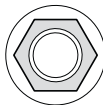
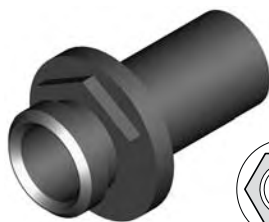
UNI = Universal

V = Various

CENTER SUPPORT FITTINGS

CLIP MOUNT

HFC331



MATERIAL	WIDTH	OAL	FITS
Steel	33mm	34mm	A

HFC04



MATERIAL	WIDTH	OAL	FITS
Steel	39mm	30mm	A

HFC05



MATERIAL	WIDTH	OAL	FITS
Steel	20mm	30mm	A

HFC14



MATERIAL	WIDTH	OAL	FITS
Steel	33mm	80mm	US

HFC18



MATERIAL	WIDTH	OAL	FITS
Steel	24mm	48mm	US

HFC19



MATERIAL	WIDTH	OAL	FITS
Steel	24mm	48mm	US

HFC316



MATERIAL	WIDTH	OAL	FITS
Steel	22mm	36mm	A

BRACKET MOUNT

HFC317



MATERIAL	WIDTH	OAL	FITS
Steel	45mm	48mm	A

HFC318



MATERIAL	WIDTH	OAL	FITS
Steel	45mm	48mm	A

HFC319



MATERIAL	WIDTH	OAL	FITS
Steel	45mm	50mm	A

HFC320



MATERIAL	WIDTH	OAL	FITS
Steel	45mm	50mm	A

HFC321



MATERIAL	WIDTH	OAL	FITS
Steel	55mm	50mm	A

HFC322



MATERIAL	WIDTH	OAL	FITS
Steel	40mm	42mm	A

A = Asian

EU = European

US = United States

UNI = Universal

V = Various

CENTER SUPPORT FITTINGS

HFC323



MATERIAL	WIDTH	OAL	FITS
Steel	45mm	48mm	A

HFC324



MATERIAL	WIDTH	OAL	FITS
Steel	55mm	50mm	A

HFC325



MATERIAL	WIDTH	OAL	FITS
Steel	40mm	42mm	A

HFC326



MATERIAL	WIDTH	OAL	FITS
Steel	45mm	48mm	A

HFC328



MATERIAL	WIDTH	OAL	FITS
Steel	45mm	50mm	A

HFC329



MATERIAL	WIDTH	OAL	FITS
Steel	45mm	50mm	A

BRACKET MOUNT

A = Asian

EU = European

US = United States

UNI = Universal

V = Various

IMPERIAL FEMALE FITTINGS

HFIF01



THREAD	SEAT	MOUNT	HEX	OAL	FITS
3/8NF	Inverted	Clip	19mm	38mm	V

HFIF01B



Brass

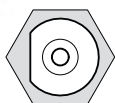
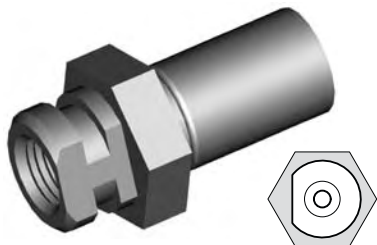
THREAD	SEAT	MOUNT	HEX	OAL	FITS
3/8NF	Inverted	Clip	17mm	38mm	V

HFIF02



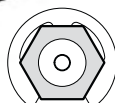
THREAD	SEAT	MOUNT	HEX	OAL	FITS
7/16NS	Inverted	Clip	19mm	38mm	V

HFIF05



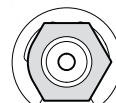
THREAD	SEAT	MOUNT	HEX	OAL	FITS
3/8NF	Inverted	Clip	19mm	38mm	V

HFIF07



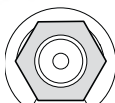
THREAD	SEAT	MOUNT	HEX	OAL	FITS
3/8NF	Inverted	Clip	16mm	41mm	US

HFIF08



THREAD	SEAT	MOUNT	HEX	OAL	FITS
3/8NF	Inverted	Clip	16mm	41mm	US

HFIF09



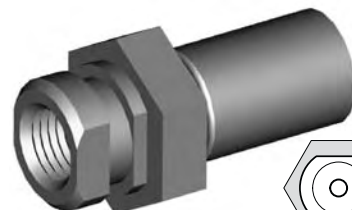
THREAD	SEAT	MOUNT	HEX	OAL	FITS
7/16NS	Inverted	Clip	16mm	45mm	US

HFIF10



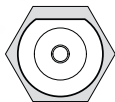
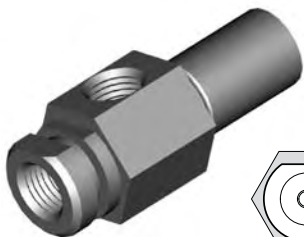
THREAD	SEAT	MOUNT	HEX	OAL	FITS
3/8NF	Inverted	Clip	16mm	39mm	US

HFIF11



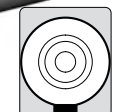
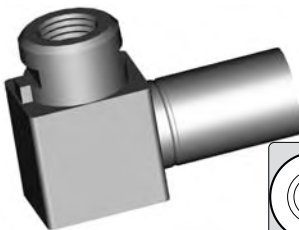
THREAD	SEAT	MOUNT	HEX	OAL	FITS
3/8NF	Inverted	Clip	19mm	38mm	V

HFIF14



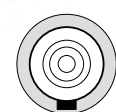
THREAD	SEAT	MOUNT	HEX	OAL	FITS
3/8NF x 2	Inverted	Clip	19mm	50mm	US

HFIF18



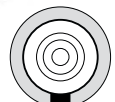
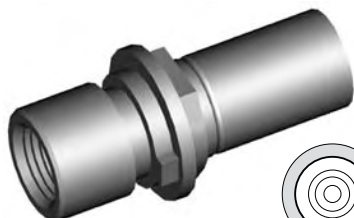
THREAD	SEAT	MOUNT	HEX	OAL	FITS
3/8NF	Inverted	Clip		41mm	US

HFIF19



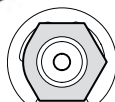
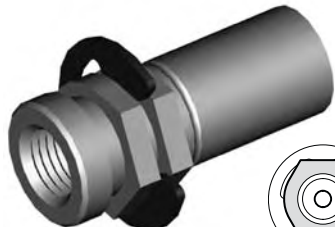
THREAD	SEAT	MOUNT	HEX	OAL	FITS
3/8NF	Inverted	Clip	16mm	38mm	US

HFIF20



THREAD	SEAT	MOUNT	HEX	OAL	FITS
7/16NS	Inverted	Clip	16mm	44mm	US

HFIF21



THREAD	SEAT	MOUNT	HEX	OAL	FITS
3/8NF	DPS	Clip	16mm	37mm	US

HFIF24



THREAD	SEAT	MOUNT	HEX	OAL	FITS
7/16NS	Inverted	Clip	16mm	40mm	US

CLIP MOUNT

A = Asian

EU = European

US = United States

UNI = Universal

V = Various

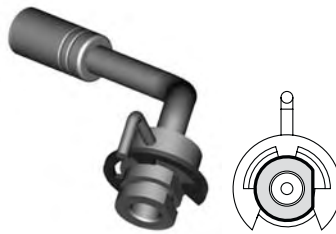
IMPERIAL FEMALE FITTINGS

HFIF26



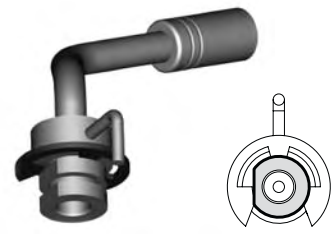
THREAD	SEAT	MOUNT	HEX	OAL	FITS
3/8NF	Inverted	Clip	16mm	40mm	US

HFIF29



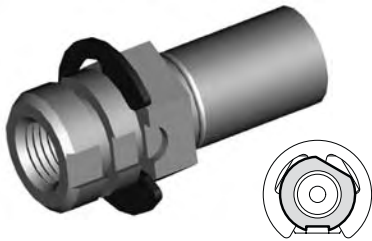
THREAD	SEAT	MOUNT	HEX	OAL	FITS
3/8NF	Inverted	Clip		78mm	US

HFIF30



THREAD	SEAT	MOUNT	HEX	OAL	FITS
3/8NF	Inverted	Clip		78mm	US

HFIF32



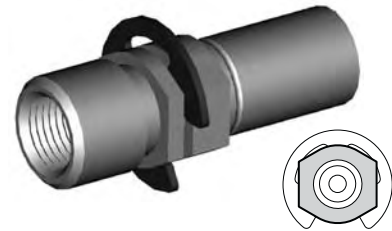
THREAD	SEAT	MOUNT	HEX	OAL	FITS
3/8NF	Inverted	Clip	17mm	41mm	US

HFIF33



THREAD	SEAT	MOUNT	HEX	OAL	FITS
7/16NS	Inverted	Clip	17mm	41mm	US

HFIF35



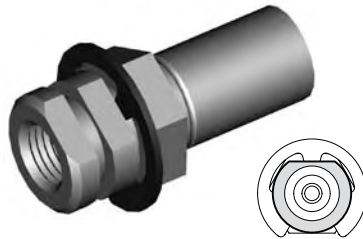
THREAD	SEAT	MOUNT	HEX	OAL	FITS
7/16NS	Inverted	Clip	16mm	46mm	US

HFIF36



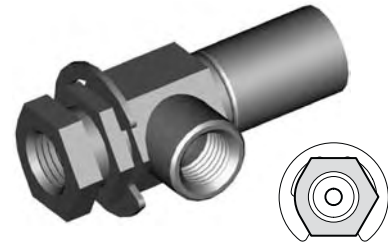
THREAD	SEAT	MOUNT	HEX	OAL	FITS
3/8NF	Inverted	Clip	16mm	39mm	US

HFIF38



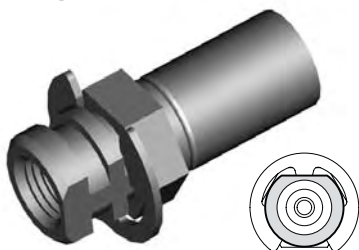
THREAD	SEAT	MOUNT	HEX	OAL	FITS
3/8NF	Inverted	Clip	17mm	40mm	US

HFIF40



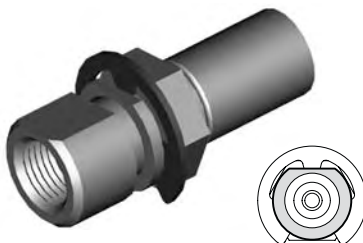
THREAD	SEAT	MOUNT	HEX	OAL	FITS
3/8NF x 2	Inverted	Clip	16mm	48mm	US

HFIF45



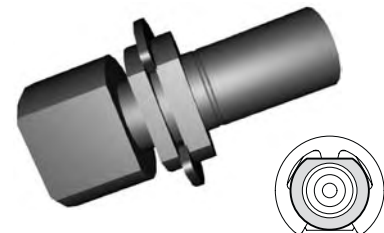
THREAD	SEAT	MOUNT	HEX	OAL	FITS
3/8NF	Inverted	Clip	16mm	39mm	US

HFIF51



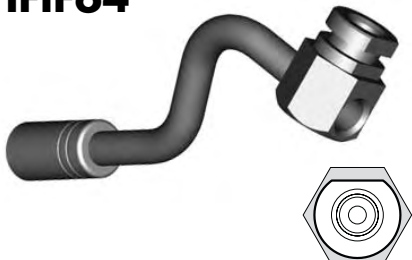
THREAD	SEAT	MOUNT	HEX	OAL	FITS
7/16NS	Inverted	Clip	17mm	46mm	US

HFIF63



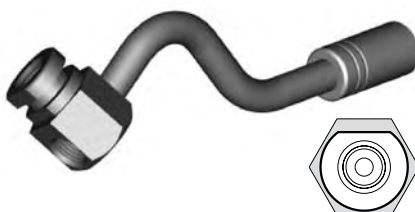
THREAD	SEAT	MOUNT	HEX	OAL	FITS
1/2NF	Inverted	Clip		47mm	US

HFIF64



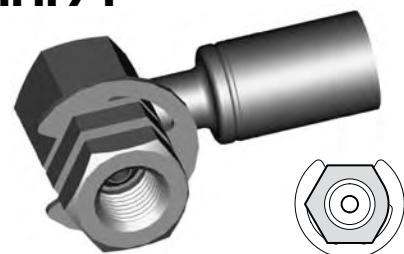
THREAD	SEAT	MOUNT	HEX	OAL	FITS
3/8NF x 2	Inverted	Clip	19mm	137mm	US

HFIF65



THREAD	SEAT	MOUNT	HEX	OAL	FITS
3/8NF x 2	Inverted	Clip	19mm	137mm	US

HFIF71



THREAD	SEAT	MOUNT	HEX	OAL	FITS
3/8NF	Inverted	Clip	16mm	45mm	US

CLIP MOUNT

A = Asian

EU = European

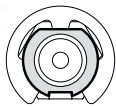
US = United States

UNI = Universal

V = Various

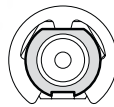
IMPERIAL FEMALE FITTINGS

HFIF72



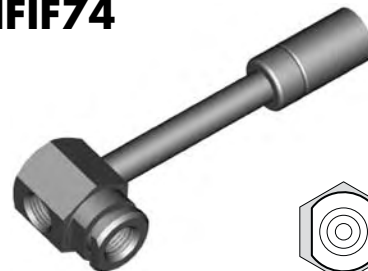
THREAD	SEAT	MOUNT	HEX	OAL	FITS
3/8NF	Inverted	Clip	17mm	47mm	US

HFIF73



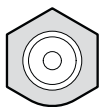
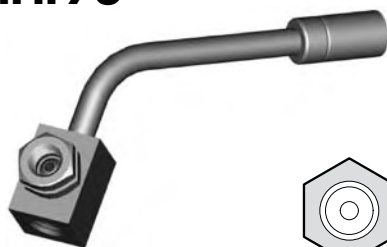
THREAD	SEAT	MOUNT	HEX	OAL	FITS
7/16NS	Inverted	Clip	17mm	47mm	US

HFIF74



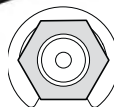
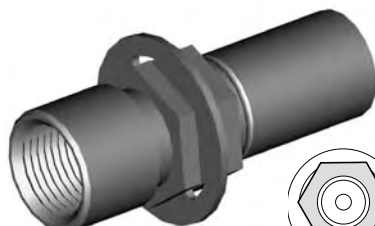
THREAD	SEAT	MOUNT	HEX	OAL	FITS
3/8NF x 2	Inverted	Clip	19mm	92mm	US

HFIF76



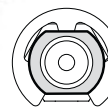
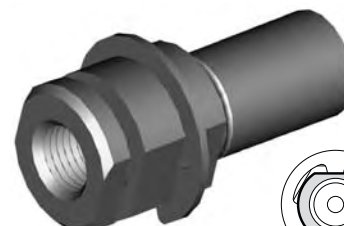
THREAD	SEAT	MOUNT	HEX	OAL	FITS
3/8NF x 2	Inverted	Clip	16mm	90mm	US

HFIF79



THREAD	SEAT	MOUNT	HEX	OAL	FITS
1/2NF	Inverted	Clip	16mm	45mm	US

HFIF82



THREAD	SEAT	MOUNT	HEX	OAL	FITS
3/8NF	Inverted	Clip		40mm	US

HFIF83



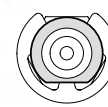
THREAD	SEAT	MOUNT	HEX	OAL	FITS
3/8NF	Inverted	Clip	16mm	55mm	US

HFIF85



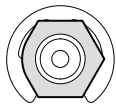
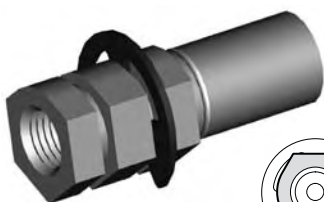
THREAD	SEAT	MOUNT	HEX	OAL	FITS
3/8NF	Inverted	Clip	17.5mm	—	US

HFIF87



THREAD	SEAT	MOUNT	HEX	OAL	FITS
3/8NF x 2	Inverted	Clip	17.5mm	50mm	US

HFIF301



THREAD	SEAT	MOUNT	HEX	OAL	FITS
3/8NF	Inverted	Clip	16mm	43mm	US

CLIP MOUNT

A = Asian

EU = European

US = United States

UNI = Universal

V = Various

IMPERIAL FEMALE FITTINGS

HFIF23



12mm Hole

THREAD	SEAT	MOUNT	HOLE	OAL	FITS
3/8NF x 2	Inverted	Bolted	12mm	65mm	US

HFIF25



10mm Hole

THREAD	SEAT	MOUNT	HOLE	OAL	FITS
3/8NF x 2	Inverted	Bolted	10mm	49mm	US

HFIF27



11.8mm Hole

THREAD	SEAT	MOUNT	HOLE	OAL	FITS
3/8NF x 2	Inverted	Bolted	11.8mm	70mm	US

HFIF28



11.8mm Hole

THREAD	SEAT	MOUNT	HOLE	OAL	FITS
3/8NF-7/16NS	Inverted	Bolted	11.8mm	52mm	US

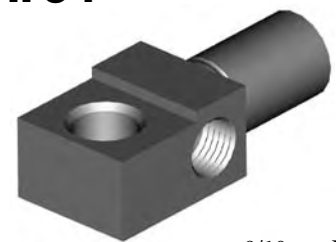
HFIF31



12mm Hole

THREAD	SEAT	MOUNT	HOLE	OAL	FITS
3/8NF-7/16NS	Inverted	Bolted	12mm	52mm	US

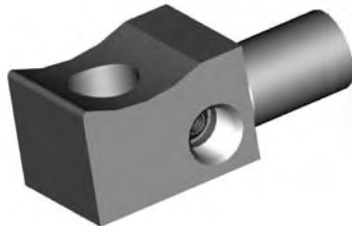
HFIF34



8/10mm Hole

THREAD	SEAT	MOUNT	HOLE	OAL	FITS
3/8NF x 2	Inverted	Bolted	8/10mm	49mm	US

HFIF37



12mm Hole

THREAD	SEAT	MOUNT	HOLE	OAL	FITS
3/8NF x 2	Inverted	Bolted	12mm	53mm	US

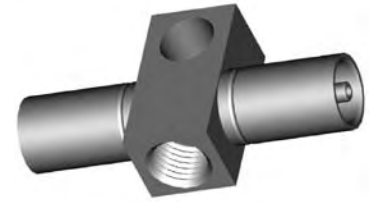
HFIF39



11.8mm Hole

THREAD	SEAT	MOUNT	HOLE	OAL	FITS
3/8NF-7/16NS	Inverted	Bolted	11.8mm	52mm	US

HFIF46



10mm Hole

THREAD	SEAT	MOUNT	HOLE	OAL	FITS
7/16NS	Inverted	Bolted	10mm	60mm	US

HFIF47



12mm Hole

THREAD	SEAT	MOUNT	HOLE	OAL	FITS
3/8NF x 2	Inverted	Bolted	12mm	50mm	US

HFIF48



11.5mm Hole

THREAD	SEAT	MOUNT	HOLE	OAL	FITS
3/8NF-7/16NS	Inverted	Bolted	11.5mm	53mm	US

HFIF53



11.8mm Hole

THREAD	SEAT	MOUNT	HOLE	OAL	FITS
3/8NF x 2	Inverted	Bolted	11.8mm	53mm	US

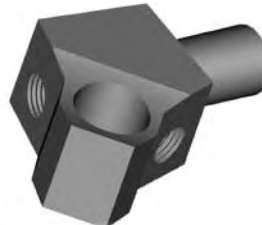
HFIF54



12mm Hole

THREAD	SEAT	MOUNT	HOLE	OAL	FITS
7/16NS	Inverted	Bolted	12mm	51mm	US

HFIF55



15mm Hole

THREAD	SEAT	MOUNT	HOLE	OAL	FITS
3/8NF x 2	Inverted	Bolted	15mm	58mm	US

HFIF56



11.8mm Hole

THREAD	SEAT	MOUNT	HOLE	OAL	FITS
3/8NF x 2	Inverted	Bolted	11.8mm	55mm	US

BOLT ON MOUNT

A = Asian

EU = European

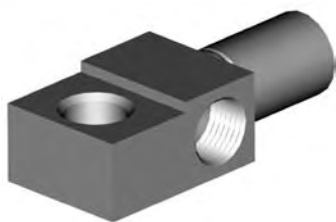
US = United States

UNI = Universal

V = Various

IMPERIAL FEMALE FITTINGS

HFIF57



8/10mm Hole

THREAD	SEAT	MOUNT	HOLE	OAL	FITS
7/16NS x 2	Inverted	Bolted	8/10mm	54mm	US

HFIF58



11.5mm Hole

THREAD	SEAT	MOUNT	HOLE	OAL	FITS
3/8NF x 2	Inverted	Bolted	11.5mm	50mm	US

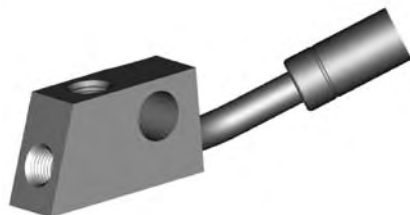
HFIF59



12mm Hole

THREAD	SEAT	MOUNT	HOLE	OAL	FITS
3/8NF x 2	Inverted	Bolted	12mm	100mm	US

HFIF66



12mm Hole

THREAD	SEAT	MOUNT	HOLE	OAL	FITS
3/8NF x 2	Inverted	Bolted	12mm	93mm	US

HFIF77



THREAD	SEAT	MOUNT	HOLE	OAL	FITS
1/2NF	Inverted	Bolted	6mm	42mm	US

HFIF303



11.4mm Hole

THREAD	SEAT	MOUNT	HOLE	OAL	FITS
3/8NF-7/16NS	Inverted	Bolted	7/16"	70mm	US

HFIF03



THREAD	SEAT	MOUNT	HEX	OAL	FITS
1/2NF	DPS		19mm	50mm	US

HFIF06



THREAD	SEAT	MOUNT	HEX	OAL	FITS
1/2NF	Inverted		17mm	38mm	UNI

BOLT ON MOUNT

NO MOUNT

A = Asian

EU = European

US = United States

UNI = Universal

V = Various

IMPERIAL FEMALE FITTINGS

HFIFX01



5/8NF External Thread

THREAD	SEAT	MOUNT	HEX	OAL	FITS
7/16NS	Inverted	Bulkhead	19mm	45mm	V

HFIFX02



5/8NF External Thread

THREAD	SEAT	MOUNT	HEX	OAL	FITS
3/8NF	Inverted	Bulkhead	19mm	45mm	V

HFIFX03



5/8NF External Thread

THREAD	SEAT	MOUNT	HEX	OAL	FITS
3/8BSF	Inverted	Bulkhead	19mm	45mm	V

HFIFX04



5/8NF External Thread

THREAD	SEAT	MOUNT	HEX	OAL	FITS
7/16NF	Inverted	Bulkhead	19mm	45mm	V

HFIFX05



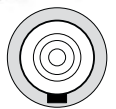
5/8NF External Thread

THREAD	SEAT	MOUNT	HEX	OAL	FITS
3/8NF	DPS	Bulkhead	19mm	45mm	V

HFIFX06

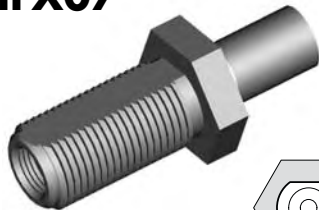


5/8NF External Thread

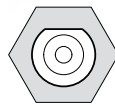


THREAD	SEAT	MOUNT	HEX	OAL	FITS
7/16NS	Inverted	Bulkhead	16mm	46mm	US

HFIFX07



3/4NF External Thread

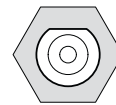


THREAD	SEAT	MOUNT	HEX	OAL	FITS
7/16NS	Inverted	Bulkhead	25mm	65mm	US

HFIFX08



3/4NF External Thread



THREAD	SEAT	MOUNT	HEX	OAL	FITS
7/16NS	Inverted	Bulkhead	25mm	135mm	US

HFIFX09



11/16NS External Thread

THREAD	SEAT	MOUNT	HEX	OAL	FITS
1/2NF	Inverted	Bulkhead	22mm	46mm	US

HFIFX10



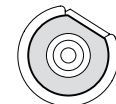
5/8NF External Thread

THREAD	SEAT	MOUNT	HEX	OAL	FITS
3/8NF	Inverted	Bulkhead	22mm	117mm	US

HFIFX11



5/8NF External Thread



THREAD	SEAT	MOUNT	HEX	OAL	FITS
3/8NF	Inverted	Bulkhead	19mm	48mm	US

HFIFX12



5/8NF External Thread



THREAD	SEAT	MOUNT	HEX	OAL	FITS
7/16NS	Inverted	Bulkhead	22mm	54mm	US

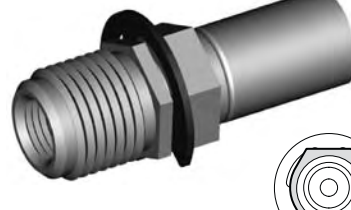
HFIFX14



3/4NF External Thread

THREAD	SEAT	MOUNT	HEX	OAL	FITS
3/8NF	Inverted	Bulkhead	22mm	45mm	US

HFIFX15



5/8NF External Thread



THREAD	SEAT	MOUNT	HEX	OAL	FITS
3/8NF	Inverted	Bulkhead	16mm	47mm	US

HFIFX16



3/4NF External Thread

THREAD	SEAT	MOUNT	HEX	OAL	FITS
7/16NS	Inverted	Bulkhead	22mm	45mm	US

BULKHEAD MOUNT

A = Asian

EU = European

US = United States

UNI = Universal

V = Various

IMPERIAL FEMALE FITTINGS

BULKHEAD MOUNT

HFIFX17



7/8NF External Thread

THREAD	SEAT	MOUNT	HEX	OAL	FITS
1/2NF	Inverted	Bulkhead	27mm	65mm	US

HFIFX18



7/8NF External Thread

THREAD	SEAT	MOUNT	HEX	OAL	FITS
1/2NF	Inverted	Bulkhead	27mm	135mm	US

HFIFX20



5/8NF External Thread

THREAD	SEAT	MOUNT	HEX	OAL	FITS
1/8NPT	-	Bulkhead	19mm	45mm	US

HFIFX21

Previously HFIF69



7/8" x 18NS External Thread

THREAD	SEAT	MOUNT	HEX	OAL	FITS
7/16NS x 2	Inverted	Bulkhead	25mm	80mm	US

HFIF15



THREAD	SEAT	MOUNT	HEX	OAL	FITS
3/8NF	Inverted	Bracket		46mm	US

HFIF22



THREAD	SEAT	MOUNT	HEX	OAL	FITS
3/8NF x 2	Inverted	Bracket		41mm	US

HFIF41



THREAD	SEAT	MOUNT	HEX	OAL	FITS
3/8NF	Inverted	Bracket		50mm	US

BRACKET MOUNT

HFIF42



THREAD	SEAT	MOUNT	HEX	OAL	FITS
3/8NF	Inverted	Bracket		50mm	US

HFIF44



THREAD	SEAT	MOUNT	HEX	OAL	FITS
3/8NF x 2	Inverted	Bracket		50mm	US

HFIF52



THREAD	SEAT	MOUNT	HEX	OAL	FITS
7/16NS	Inverted	Bracket		46mm	US

HFIF60



THREAD	SEAT	MOUNT	HEX	OAL	FITS
3/8NF x 2	Inverted	Bracket		102mm	US

HFIF70



THREAD	SEAT	MOUNT	HEX	OAL	FITS
3/8NF x 2	Inverted	Bracket		48mm	US

HFIF81



THREAD	SEAT	MOUNT	HEX	OAL	FITS
3/8NF	Inverted	Bracket		38mm	US

A = Asian

EU = European

US = United States

UNI = Universal

V = Various

IMPERIAL FEMALE FITTINGS

HFIF90



THREAD	SEAT	MOUNT	HEX	OAL	FITS
3/8NF x 2	Inverted	Bracket	–	37mm	US

HFIF109



THREAD	SEAT	MOUNT	HEX	OAL	FITS
7/16NS x 2	Inverted	Bracket	–	46mm	US

HFIF304



THREAD	SEAT	MOUNT	HEX	OAL	FITS
3/8NF x 2	Inverted	Bracket		51mm	US

HFIF306



THREAD	SEAT	MOUNT	HEX	OAL	FITS
3/8NF	Inverted	Bracket		58mm	US

BRACKET MOUNT

IMPERIAL MALE FITTINGS

HFIM01



THREAD	THREAD LENGTH	HEX	OAL	FITS
3/8NF	12.5mm	16mm	40mm	V

HFIM01B



Brass

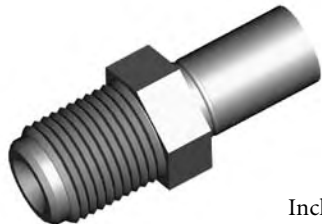
THREAD	THREAD LENGTH	HEX	OAL	FITS
3/8NF	12.5mm	14mm	40mm	V

HFIM03



THREAD	THREAD LENGTH	HEX	OAL	FITS
7/16NF	12mm	16mm	40mm	V

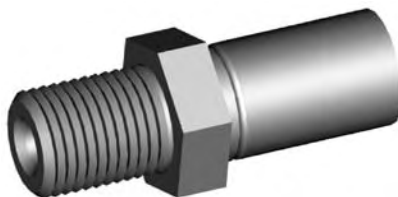
HFIM04



Includes
Copper Sealing Washer

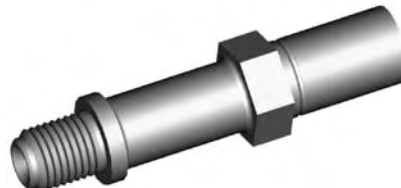
THREAD	THREAD LENGTH	HEX	OAL	FITS
11/16NF	20mm	19mm	50mm	V

HFIM08



THREAD	THREAD LENGTH	HEX	OAL	FITS
1/2NF	15.5mm	17mm	43mm	V

HFIM09



THREAD	THREAD LENGTH	HEX	OAL	FITS
7/16NF	13.5mm	16mm	69mm	US

STANDARD MOUNT

HFIM10



THREAD	THREAD LENGTH	HEX	OAL	FITS
3/8NF	12.5mm	16mm	44mm	V

HFIM11



THREAD	THREAD LENGTH	HEX	OAL	FITS
3/8NF	13mm	16mm	68mm	V

HFIM13



THREAD	THREAD LENGTH	HEX	OAL	FITS
7/16NS	12mm	16mm	40mm	V

HFIM14



THREAD	THREAD LENGTH	HEX	OAL	FITS
7/16NS	12mm	16mm	78mm	US

HFIM15



THREAD	THREAD LENGTH	HEX	OAL	FITS
3/8BSF	12.5mm	16mm	40mm	EU

HFIM16



THREAD	THREAD LENGTH	HEX	OAL	FITS
7/16NF	13mm	17mm	61mm	US

HFIM18



THREAD	THREAD LENGTH	HEX	OAL	FITS
3/8NF	12mm	16mm	53mm	US

HFIM19



THREAD	THREAD LENGTH	HEX	OAL	FITS
1/8NPT	12mm	14mm	40mm	V

HFIM21



THREAD	THREAD LENGTH	HEX	OAL	FITS
3/8NF	12.5mm	16mm	53mm	V

A = Asian

EU = European

US = United States

UNI = Universal

V = Various

IMPERIAL MALE FITTINGS

HFIM24



THREAD	THREAD LENGTH	HEX	OAL	FITS
1/2NF	12mm	16mm	44mm	US

HFIM25



THREAD	THREAD LENGTH	HEX	OAL	FITS
3/8NF	12mm	16mm	78mm	US

HFIM26



THREAD	THREAD LENGTH	HEX	OAL	FITS
7/16NS	13.5mm	16mm	78mm	US

HFIM27



THREAD	THREAD LENGTH	HEX	OAL	FITS
7/16NF	13mm	16mm	63mm	US

HFIM02



THREAD	THREAD LENGTH	HEX	OAL	FITS
3/8NF	24mm	16mm	52mm	V

HFIM05



THREAD	THREAD LENGTH	HEX	OAL	FITS
3/8NF-1/2NF	26.5mm	16mm	55mm	EU

HFIM06



THREAD	THREAD LENGTH	HEX	OAL	FITS
7/16NF	28.5mm	17mm	56mm	V

HFIM07



THREAD	THREAD LENGTH	HEX	OAL	FITS
1/2NF	32mm	19mm	60mm	V

HFIM12



THREAD	THREAD LENGTH	HEX	OAL	FITS
3/8NF	24mm	16mm	75mm	EU

HFIM17



THREAD	THREAD LENGTH	HEX	OAL	FITS
3/8NF	12mm	16mm	49mm	US

HFIM22



THREAD	THREAD LENGTH	HEX	OAL	FITS
7/16NF	13mm	16mm	51mm	US

STANDARD MOUNT

BULKHEAD MOUNT

CLIP MOUNT

A = Asian

EU = European

US = United States

UNI = Universal

V = Various

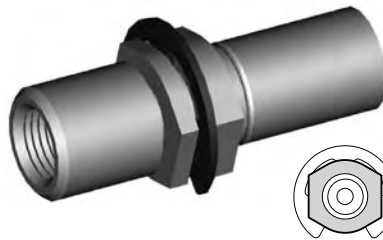
METRIC FEMALE FITTINGS

HFMF01



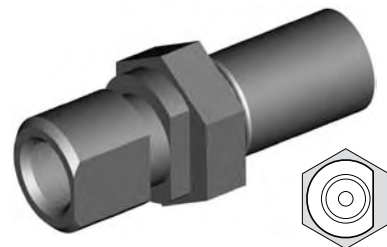
THREAD	SEAT	MOUNT	HEX	OAL	FITS
M10 x 1	Inverted	Clip	17mm	38mm	V

HFMF02



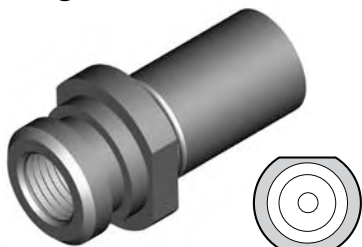
THREAD	SEAT	MOUNT	HEX	OAL	FITS
M10 x 1	Inverted	Clip	17mm	47mm	A

HFMF03



THREAD	SEAT	MOUNT	HEX	OAL	FITS
M10 x 1	DPS	Clip	19mm	46mm	A

HFMF04



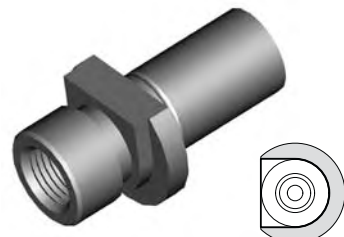
THREAD	SEAT	MOUNT	HEX	OAL	FITS
M10 x 1	Inverted	Clip	17mm	38mm	A

HFMF05



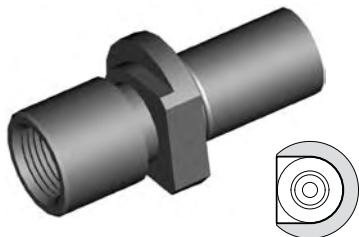
THREAD	SEAT	MOUNT	HEX	OAL	FITS
M10 x 1	DPS	Clip	14mm	38mm	EU

HFMF06



THREAD	SEAT	MOUNT	HEX	OAL	FITS
M10 x 1	Inverted	Clip		39mm	A

HFMF07



THREAD	SEAT	MOUNT	HEX	OAL	FITS
M12 x 1	Inverted	Clip		45mm	A

HFMF08



THREAD	SEAT	MOUNT	HEX	OAL	FITS
M10 x 1	DPS	Clip	17mm	41mm	V

HFMF09



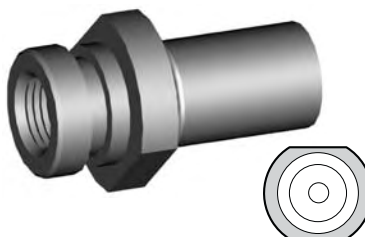
THREAD	SEAT	MOUNT	HEX	OAL	FITS
M10x1.25	Inverted	Clip	17mm	37mm	V

HFMF10



THREAD	SEAT	MOUNT	HEX	OAL	FITS
M12 x 1	Inverted	Clip	19mm	46mm	A

HFMF11



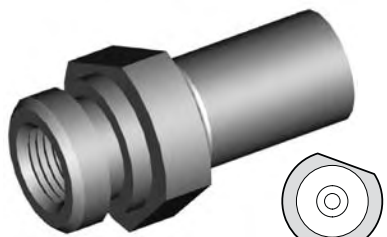
THREAD	SEAT	MOUNT	HEX	OAL	FITS
M10 x 1	Inverted	Clip	19mm	37mm	A

HFMF12



THREAD	SEAT	MOUNT	HEX	OAL	FITS
M9 x 1	Inverted	Clip	16mm	47mm	A

HFMF13



THREAD	SEAT	MOUNT	HEX	OAL	FITS
M10 x 1	Inverted	Clip		38mm	A

HFMF14



THREAD	SEAT	MOUNT	HEX	OAL	FITS
M10 x 1	Inverted	Clip	17mm	45mm	A

HFMF15



THREAD	SEAT	MOUNT	HEX	OAL	FITS
M10 x 1	Inverted	Clip	17mm	77mm	A

CLIP MOUNT

A = Asian

EU = European

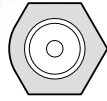
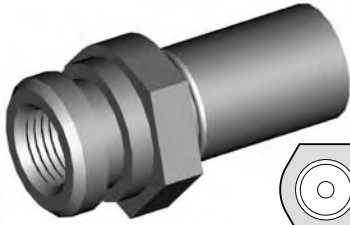
US = United States

UNI = Universal

V = Various

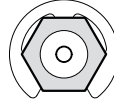
METRIC FEMALE FITTINGS

HFMF16



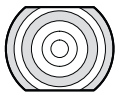
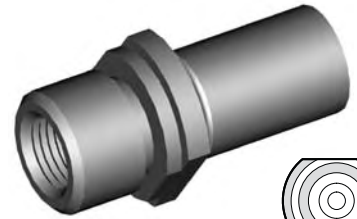
THREAD	SEAT	MOUNT	HEX	OAL	FITS
M10 x 1	Inverted	Clip	19mm	37mm	V

HFMF19



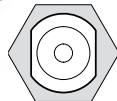
THREAD	SEAT	MOUNT	HEX	OAL	FITS
M12 x 1	Inverted	Clip	19mm	47mm	A

HFMF20



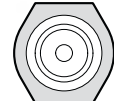
THREAD	SEAT	MOUNT	HEX	OAL	FITS
M10 x 1	Inverted	Clip	17mm	38mm	A

HFMF21



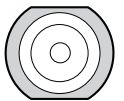
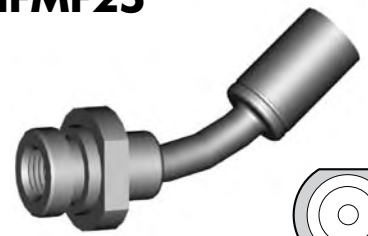
THREAD	SEAT	MOUNT	HEX	OAL	FITS
M10x1.25	DPS	Clip	17mm	47mm	EU

HFMF24



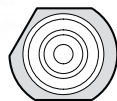
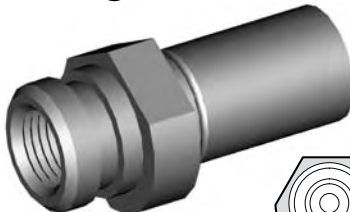
THREAD	SEAT	MOUNT	HEX	OAL	FITS
M10 x 1	DPS	Clip	19mm	38mm	V

HFMF25



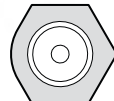
THREAD	SEAT	MOUNT	HEX	OAL	FITS
M10 x 1	Inverted	Clip	19mm	70mm	A

HFMF26



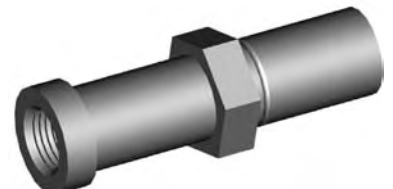
THREAD	SEAT	MOUNT	HEX	OAL	FITS
M10 x 1	Inverted	Clip	17mm	38mm	A

HFMF28



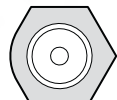
THREAD	SEAT	MOUNT	HEX	OAL	FITS
M10 x 1	Inverted	Clip	17mm	37mm	V

HFMF29



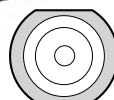
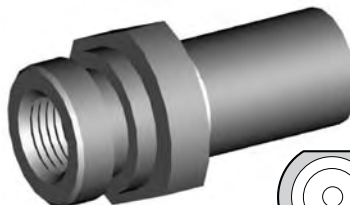
THREAD	SEAT	MOUNT	HEX	OAL	FITS
M10 x 1	Inverted		17mm	54mm	A

HFMF31



THREAD	SEAT	MOUNT	HEX	OAL	FITS
M10 x 1	Inverted	Clip	17mm	45mm	V

HFMF35



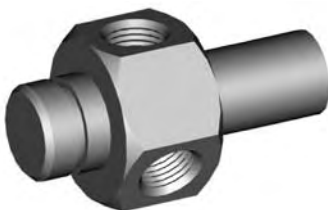
THREAD	SEAT	MOUNT	HEX	OAL	FITS
M10 x 1	DPS	Clip	19mm	37mm	A

HFMF36



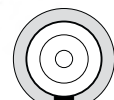
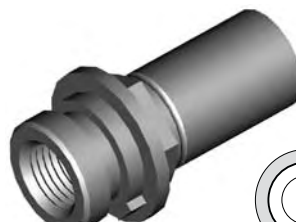
THREAD	SEAT	MOUNT	HEX	OAL	FITS
M10x1-(2)	Inverted	Clip	26mm	50mm	A

HFMF37



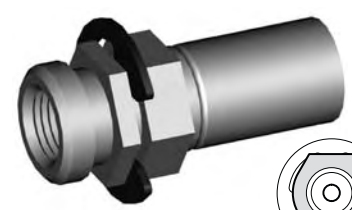
THREAD	SEAT	MOUNT	HEX	OAL	FITS
M10x1-(2)	Inverted	Clip	26mm	50mm	A

HFMF38



THREAD	SEAT	MOUNT	HEX	OAL	FITS
M10 x 1	DPS	Clip	16mm	37mm	US

HFMF39



THREAD	SEAT	MOUNT	HEX	OAL	FITS
M10 x 1	DPS	Clip	16mm	39mm	US

CLIP MOUNT

A = Asian

EU = European

US = United States

UNI = Universal

V = Various

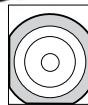
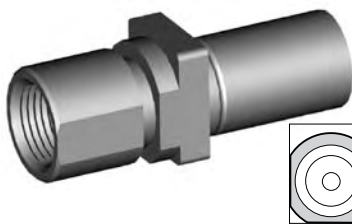
METRIC FEMALE FITTINGS

HFMF42



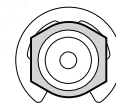
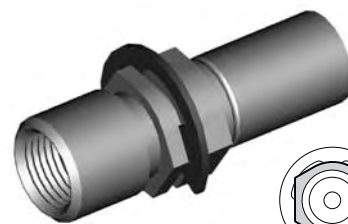
THREAD	SEAT	MOUNT	HEX	OAL	FITS
M12 x 1	Inverted	Clip		57mm	US

HFMF43



THREAD	SEAT	MOUNT	HEX	OAL	FITS
M12 x 1	Inverted	Clip		45mm	US

HFMF51



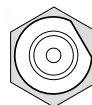
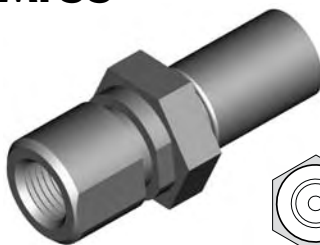
THREAD	SEAT	MOUNT	HEX	OAL	FITS
M12 x 1	DPS	Clip	16mm	47mm	US

HFMF54



THREAD	SEAT	MOUNT	HEX	OAL	FITS
M10 x 1	DPS	Clip	15.5mm	37mm	EU

HFMF55



THREAD	SEAT	MOUNT	HEX	OAL	FITS
M10 x 1	DPS	Clip	19mm	46mm	V

HFMF56



THREAD	SEAT	MOUNT	HEX	OAL	FITS
M10x1.25	DPS	Clip	14mm	45mm	EU

HFMF57



THREAD	SEAT	MOUNT	HEX	OAL	FITS
M12x1.25	DPS	Clip	19mm	46mm	EU

HFMF58



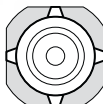
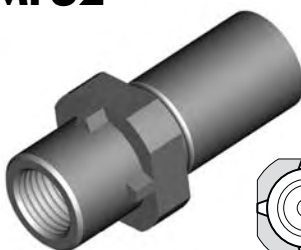
THREAD	SEAT	MOUNT	HEX	OAL	FITS
M10 x 1	DPS	Clip	17mm	54mm	V

HFMF59



THREAD	SEAT	MOUNT	HEX	OAL	FITS
M10 x 1	DPS	Clip	17mm	38mm	EU

HFMF62



THREAD	SEAT	MOUNT	HEX	OAL	FITS
M10 x 1	DPS	Clip	17mm	39mm	EU

HFMF63



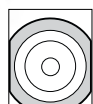
THREAD	SEAT	MOUNT	HEX	OAL	FITS
M10 x 1	DPS	Clip	17mm	39mm	EU

HFMF65



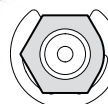
THREAD	SEAT	MOUNT	HEX	OAL	FITS
M10 x 1	DPS	Clip	17mm	39mm	A

HFMF66



THREAD	SEAT	MOUNT	HEX	OAL	FITS
M10 x 1	Inverted	Clip		36mm	US

HFMF67



THREAD	SEAT	MOUNT	HEX	OAL	FITS
M10 x 1	DPS	Clip	16mm	46mm	US

HFMF68



THREAD	SEAT	MOUNT	HEX	OAL	FITS
M10 x 1	Inverted	Clip	16mm	37mm	US

CLIP MOUNT

A = Asian

EU = European

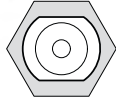
US = United States

UNI = Universal

V = Various

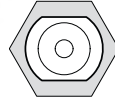
METRIC FEMALE FITTINGS

HFMF71



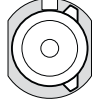
THREAD	SEAT	MOUNT	HEX	OAL	FITS
M10 x 1	DPS	Clip	17mm	39mm	EU

HFMF100



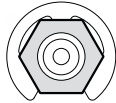
THREAD	SEAT	MOUNT	HEX	OAL	FITS
M10 x 1	DPS	Clip	17mm	39mm	EU

HFMF305



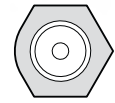
THREAD	SEAT	MOUNT	HEX	OAL	FITS
M10 x 1	DPS	Clip	15mm	37mm	EU

HFMF307



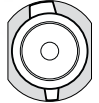
THREAD	SEAT	MOUNT	HEX	OAL	FITS
M10 x 1	Inverted	Clip	17mm	46mm	A

HFMF308



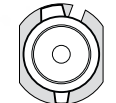
THREAD	SEAT	MOUNT	HEX	OAL	FITS
M10 x 1	Inverted	Clip	19mm	89mm	A

HFMF315



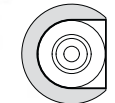
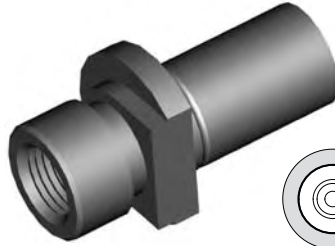
THREAD	SEAT	MOUNT	HEX	OAL	FITS
M10 x 1	DPS	Clip	17mm	36mm	A

HFMF316



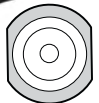
THREAD	SEAT	MOUNT	HEX	OAL	FITS
M10 x 1	DPS	Clip	17mm	36mm	A

HFMF327



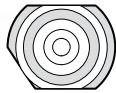
THREAD	SEAT	MOUNT	HEX	OAL	FITS
M10 x 1	DPS	Clip		39mm	A

HFMF329



THREAD	SEAT	MOUNT	HEX	OAL	FITS
M10 x 1	DPS	Clip	17mm	38mm	A

HFMF333



THREAD	SEAT	MOUNT	HEX	OAL	FITS
M10 x 1	Inverted	Clip	17mm	41mm	A

HFMF340



THREAD	SEAT	MOUNT	HEX	OAL	FITS
M10 x 1	DPS	Clip	15mm	37mm	EU

CLIP MOUNT

A = Asian

EU = European

US = United States

UNI = Universal

V = Various

METRIC FEMALE FITTINGS

BOLT ON MOUNT

HFMF18



8.5mm Hole

THREAD	SEAT	MOUNT	HOLE	OAL	FITS
M10x1-(2)	Inverted	Bolted	8.5mm	55mm	A

HFMF30



8.5mm Hole

THREAD	SEAT	MOUNT	HOLE	OAL	FITS
M12x1-10xl	Inverted	Bolted	8.5mm	54mm	A

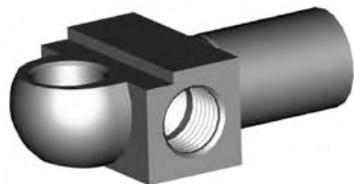
HFMF48



8.75mm Hole

THREAD	SEAT	MOUNT	HOLE	OAL	FITS
M10 x 1	Inverted	Bolted	8.75mm	53mm	A

HFMF50



8/10mm Hole

THREAD	SEAT	MOUNT	HOLE	OAL	FITS
M10x1-(2)	DPS	Bolted	8/10mm	48mm	US

HFMF69



6.4mm Hole

THREAD	SEAT	MOUNT	HOLE	OAL	FITS
M10 x 1	Inverted	Bolted	6.4mm	62mm	A

HFMF322



M8 x 1.25

THREAD	SEAT	MOUNT	HOLE	OAL	FITS
M10 x 1	Inverted	Bolted	M8 x 1.25	42mm	A

BULKHEAD MOUNT

HFMFX01



5/8NF External Thread

THREAD	SEAT	MOUNT	HEX	OAL	FITS
M10 x 1	Inverted	Bulkhead	19mm	45mm	V

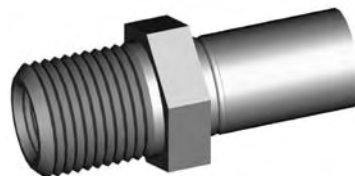
HFMFX02



5/8NF External Thread

THREAD	SEAT	MOUNT	HEX	OAL	FITS
M10x1.25	Inverted	Bulkhead	19mm	45mm	V

HFMFX04

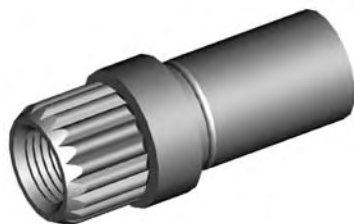


5/8NF External Thread

THREAD	SEAT	MOUNT	HEX	OAL	FITS
M10 x 1	DPS	Bulkhead	19mm	45mm	V

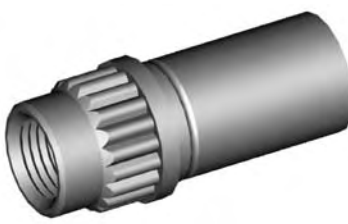
SPLINE MOUNT

HFMF22



THREAD	SEAT	MOUNT	HEX	OAL	FITS
M10 x 1	DPS	Spline		39mm	EU

HFMF27



THREAD	SEAT	MOUNT	HEX	OAL	FITS
M10 x 1	DPS	Spline		36mm	EU

A = Asian

EU = European

US = United States

UNI = Universal

V = Various

METRIC FEMALE FITTINGS

HFMF40



THREAD	SEAT	MOUNT	HEX	OAL	FITS
M10 x 1	DPS	Bracket		42mm	US

HFMF41



THREAD	SEAT	MOUNT	HEX	OAL	FITS
M10x1-(2)	DPS	Bracket		44mm	US

HFMF70



THREAD	SEAT	MOUNT	HEX	OAL	FITS
M10x1-(2)	DPS	Bracket		54mm	US

HFMF311



THREAD	SEAT	MOUNT	HEX	OAL	FITS
M12 x 1	DPS	Bracket		55mm	US

HFMF312



THREAD	SEAT	MOUNT	HEX	OAL	FITS
M10 x 1	DPS	Bracket		55mm	US

HFMF313



THREAD	SEAT	MOUNT	HEX	OAL	FITS
M12 x 1	DPS	Bracket		48mm	US

HFMF317



THREAD	SEAT	MOUNT	HEX	OAL	FITS
M10 x 1	Inverted	Bracket		48mm	A

HFMF318



THREAD	SEAT	MOUNT	HEX	OAL	FITS
M10 x 1	Inverted	Bracket		115mm	A

HFMF319



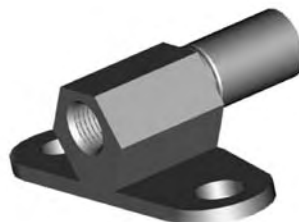
THREAD	SEAT	MOUNT	HEX	OAL	FITS
M10 x 1	Inverted	Bracket		115mm	A

HFMF320



THREAD	SEAT	MOUNT	HEX	OAL	FITS
M10 x 1	Inverted	Bracket		38mm	A

HFMF324



THREAD	SEAT	MOUNT	HEX	OAL	FITS
M10 x 1	Inverted	Bracket		46mm	A

HFMF325



THREAD	SEAT	MOUNT	HEX	OAL	FITS
M10 x 1	Inverted	Bracket		45mm	A

HFMF342



THREAD	SEAT	MOUNT	HEX	OAL	FITS
M10 x 1	Inverted	Bracket	-	100mm	A

HFMF343



THREAD	SEAT	MOUNT	HEX	OAL	FITS
M10 x 1	Inverted	Bracket	-	100mm	A

BRACKET MOUNT

A = Asian

EU = European

US = United States

UNI = Universal

V = Various

METRIC MALE FITTINGS

STANDARD MOUNT

HFMM01



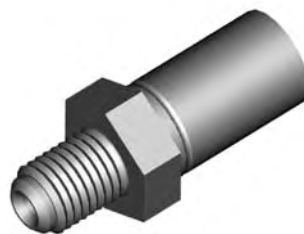
THREAD	THREAD LENGTH	HEX	OAL	FITS
M10 x 1	17mm	16mm	45mm	A

HFMM03



THREAD	THREAD LENGTH	HEX	OAL	FITS
M10 x 1	14mm	14mm	43mm	V

HFMM04



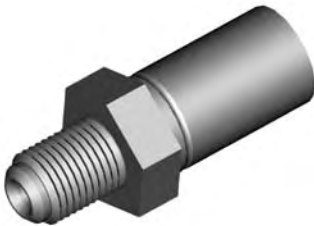
THREAD	THREAD LENGTH	HEX	OAL	FITS
M10 x 1.25	13mm	16mm	41mm	A

HFMM05



THREAD	THREAD LENGTH	HEX	OAL	FITS
M12 x 1	18mm	17mm	47mm	A

HFMM06



THREAD	THREAD LENGTH	HEX	OAL	FITS
M10 x 1	13mm	16mm	41mm	A

HFMM08



THREAD	THREAD LENGTH	HEX	OAL	FITS
M10 x 1	17mm	17mm	78mm	A

HFMM13



THREAD	THREAD LENGTH	HEX	OAL	FITS
M12 x 1	19mm	16mm	77mm	US

HFMM15



THREAD	THREAD LENGTH	HEX	OAL	FITS
M14 x 1.5	23.5mm	16mm	77mm	US

HFMM17



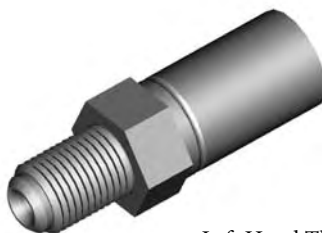
THREAD	THREAD LENGTH	HEX	OAL	FITS
M12 x 1.25	17mm	17mm	45mm	EU

HFMM22



THREAD	THREAD LENGTH	HEX	OAL	FITS
M10 x 1	33mm	14mm	62mm	EU

HFMM23



Left Hand Thread

THREAD	THREAD LENGTH	HEX	OAL	FITS
M10 x 1	14mm	14mm	43mm	EU

HFMM24



THREAD	THREAD LENGTH	HEX	OAL	FITS
M10 x 1.5	13mm	16mm	41mm	EU

A = Asian

EU = European

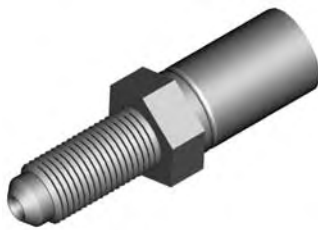
US = United States

UNI = Universal

V = Various

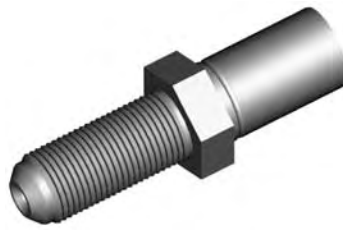
METRIC MALE FITTINGS

HFMM02



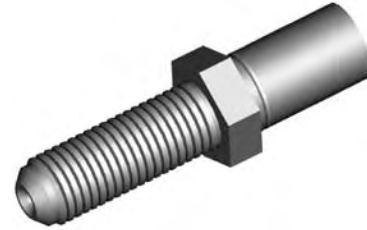
THREAD	THREAD LENGTH	HEX	OAL	FITS
M10 x 1	23mm	15mm	51mm	V

HFMM09



THREAD	THREAD LENGTH	HEX	OAL	FITS
M12 x 1	28mm	17mm	56mm	A

HFMM10



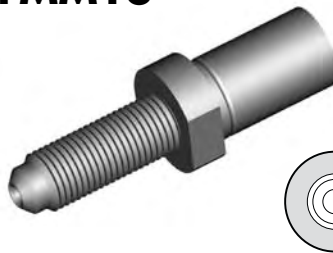
THREAD	THREAD LENGTH	HEX	OAL	FITS
M12 x 1.5	33mm	17mm	61mm	A

HFMM11



THREAD	THREAD LENGTH	HEX	OAL	FITS
M10 x 1.25	15mm	14mm	43mm	EU

HFMM18



THREAD	THREAD LENGTH	HEX	OAL	FITS
M10 x 1	28mm		56mm	EU

HFMM20



THREAD	THREAD LENGTH	HEX	OAL	FITS
M10 x 1	24mm	14mm	81mm	EU

HFMM21



THREAD	THREAD LENGTH	HEX	OAL	FITS
M10 x 1.25	24mm	14mm	76mm	EU

HFMM12



THREAD	THREAD LENGTH	HEX	OAL	FITS
M10 x 1	15mm	17mm	50mm	V

HFMM302



THREAD	THREAD LENGTH	HEX	OAL	FITS
M10 x 1	14.5mm	17mm	49mm	EU

HFMM303



THREAD	THREAD LENGTH	HEX	OAL	FITS
M10 x 1	16mm	17mm	52mm	EU

BULKHEAD MOUNT

CLIP MOUNT

A = Asian

EU = European

US = United States

UNI = Universal

V = Various

BRACKETS

BQB01



LOCATION	HOLE	FITS
	9mm	US

BQB04



LOCATION	HOLE	FITS
Either	8.4mm	US

BQB05



LOCATION	HOLE	FITS
	9mm	US

BQB10



LOCATION	HOLE	FITS
Left	9.6mm	US

BQB11



LOCATION	HOLE	FITS
Right	9.6mm	US

BQB14



LOCATION	HOLE	FITS
Left	8.6mm	US

BQB15



LOCATION	HOLE	FITS
Right	8.6mm	US

BQB20



LOCATION	HOLE	FITS
Either	9mm	US

BQB24



LOCATION	HOLE	FITS
Left	8.8mm	US

BQB25



LOCATION	HOLE	FITS
Right	8.8mm	US

BQB26



LOCATION	HOLE	FITS
Right	7mm	US

BQB27



LOCATION	HOLE	FITS
Left	7mm	US

BQB29



LOCATION	HOLE	FITS
Either	9.6mm	US

BQB30



LOCATION	HOLE	FITS
Rear	10.4mm	US

BQB39



LOCATION	HOLE	FITS
Left	9mm	US

FITTING BRACKETS

A = Asian

EU = European

US = United States

UNI = Universal

V = Various

BRACKETS

BQB40



LOCATION	HOLE	FITS
Right	9mm	US

BQB41



LOCATION	HOLE	FITS
Left	9mm	US

BQB42



LOCATION	HOLE	FITS
Right	9mm	US

BQB50



LOCATION	HOLE	FITS
Either	8mm	US

BQB63



LOCATION	HOLE	FITS
Rear	10.8mm	US

BQB64



LOCATION	HOLE	FITS
Left	8.3mm	US

BQB65



LOCATION	HOLE	FITS
Right	8.3mm	US

BQB75



LOCATION	HOLE	FITS
Rear	8.5mm	US

BQB86



LOCATION	HOLE	FITS
Left	8.5mm	US

BQB87



LOCATION	HOLE	FITS
Right	8.5mm	US

BQB89



LOCATION	HOLE	FITS
Either	10.4mm	US

BQB90



LOCATION	HOLE	FITS
Left	9.0mm	US

BQB91



LOCATION	HOLE	FITS
Right	9.0mm	US

BQB94



LOCATION	HOLE	FITS
Right	9.0mm	US

BQB111



LOCATION	HOLE	FITS
Left	8.8mm	US

FITTING BRACKETS

A = Asian

EU = European

US = United States

UNI = Universal

V = Various

BRACKETS

FITTING BRACKETS

BQB112



LOCATION	HOLE	FITS
Right	8.8mm	US

BQB115



LOCATION	HOLE	FITS
Either	3/8UNC	US

BQB312



LOCATION	HOLE	FITS
Left	6.3mm	US

BQB313



LOCATION	HOLE	FITS
Right	6.3mm	US

BQB02



LOCATION	HOLE	FITS
Right	M6 x 1	US

BQB08



LOCATION	HOLE	FITS
Right	8.8mm	US

BQB09



LOCATION	HOLE	FITS
Left	8.8mm	US

CENTER BRACKETS

BQB12



LOCATION	HOLE	FITS
Left	M6 x 1	US

BQB16



LOCATION	HOLE	FITS
Left	9mm	US

BQB17



LOCATION	HOLE	FITS
Right	9mm	US

BQB18



LOCATION	HOLE	FITS
Left	9mm	US

BQB19



LOCATION	HOLE	FITS
Right	9mm	US

BQB21



LOCATION	HOLE	FITS
Left	6mm	US

A = Asian

EU = European

US = United States

UNI = Universal

V = Various

BRACKETS

BQB22



LOCATION	HOLE	FITS
Right	6mm	US

BQB23



LOCATION	HOLE	FITS
Either		US

BQB34



LOCATION	HOLE	FITS
Left	M6 x 1	US

BQB35



LOCATION	HOLE	FITS
Right	M6 x 1	US

BQB36



LOCATION	HOLE	FITS
Left		US

BQB37



LOCATION	HOLE	FITS
Right		US

BQB38



LOCATION	HOLE	FITS
Either	5/16NF	US

BQB48



LOCATION	HOLE	FITS
Left	6.4mm	US

BQB49



LOCATION	HOLE	FITS
Right	6.4mm	US

BQB69



LOCATION	HOLE	FITS
Either	M8x1.25	US

BQB70



LOCATION	HOLE	FITS
Left	9.2mm	US

BQB71



LOCATION	HOLE	FITS
Right	9.2mm	US

BQB74



LOCATION	HOLE	FITS
Left	8.8mm	US

BQB77



LOCATION	HOLE	FITS
Left	9.1mm	US

BQB78



LOCATION	HOLE	FITS
Right	8.8mm	US

CENTER BRACKETS

A = Asian

EU = European

US = United States

UNI = Universal

V = Various

BRACKETS

CENTER BRACKETS

BQB92



LOCATION	HOLE	FITS
Left	M6 x 1	US

BQB93



LOCATION	HOLE	FITS
Right	M6x1	US

UNIVERSAL

BQB06



A = Asian

EU = European

US = United States

UNI = Universal

V = Various

RUBBER HOSE COMPONENTS

BQ203



LOCATION	OAL	FITS
16mm	104mm	V

BQ210



LOCATION	OAL	FITS
30mm	10mm	EU

BQ211



LOCATION	OAL	FITS
18mm	25mm	V

BQ212



LOCATION	OAL	FITS
22mm	41mm	V

BQ213



LOCATION	OAL	FITS
30mm	32mm	A

BQ215



LOCATION	OAL	FITS
25mm	22mm	A

BQ216



LOCATION	OAL	FITS
28mm	32mm	EU

BQ217



LOCATION	OAL	FITS
28mm	29mm	EU

BQ218



LOCATION	OAL	FITS
25mm	16mm	EU

A = Asian

EU = European

US = United States

UNI = Universal

V = Various

PLASTIC CLIPS

BQ65



BQ66



BQ67



BQ68



BQ69



BQ70



BQ97

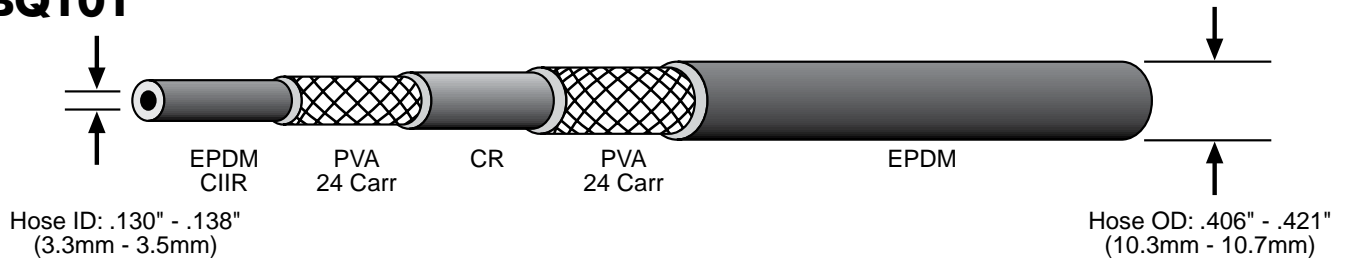


BQ98



Rubber Brake Hose

BQ101



- Two braid PVA reinforced hose
 - Meets FMVSS-106 and SAE J1401 specifications
 - Temperature range -50°C to 121°C
 - Compatible with DOT 3, DOT 4 and most non-petroleum based brake fluids including silicone
 - Excellent moisture resistance
 - Superior weather resistant cover material
- (50 Feet Minimum)

BQ11



Hose Protector Spring
(PKT 6)

BQ12



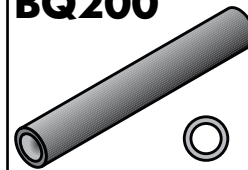
Fitting Shoulder Clips
(PKT 20)

BQ71



Bracket Retaining Screws
(PKT 50)

BQ200



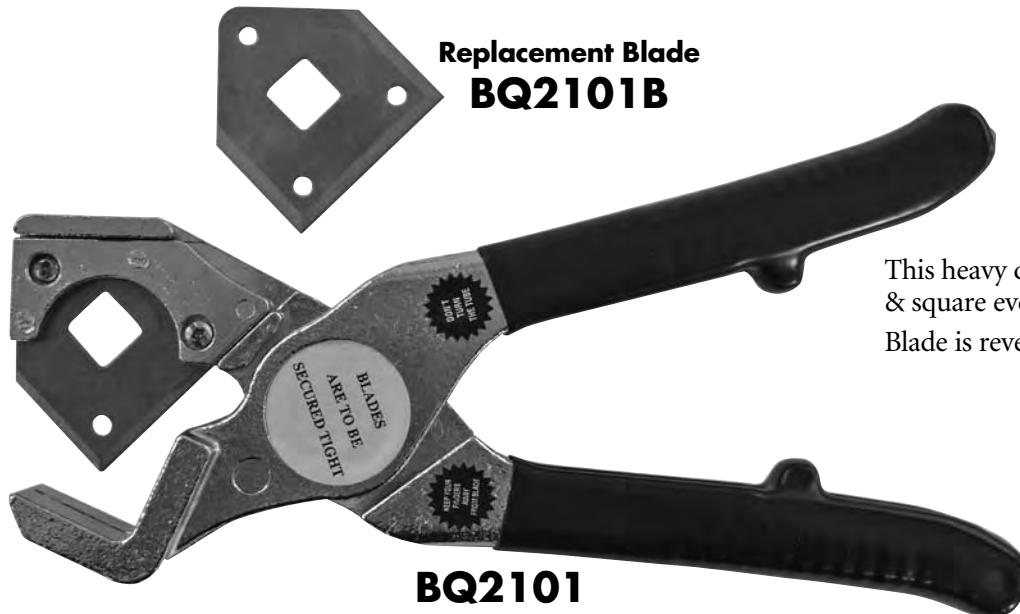
Insulating Hose Thick
(10' Length)

BQ201



Insulating Hose Thin
(50' Length)

Rubber Brake Hose Cutter



This heavy duty tool cuts hose clean & square every time - with ease.
Blade is reversable for double life..



BQ2004

Suits old style cutter

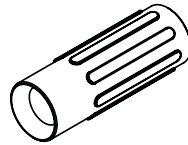
STAINLESS STEEL BRAIDED HOSE & ACCESSORIES



Polished Stainless Steel Fittings

Complete your brake plumbing job with stainless steel fittings for non-rusting durability. Polished finish for the chrome like look.

PART NO.	DESCRIPTION
BQ56ASS	3 Way Tube Tee - 3/8" x 24NF - 5/16" mount hole
BQ111SS	Female Tube Joiner - 7/16" x 24NS
BQ2577SS	Tube Nut Male (7/16" x 24NS - 1/4")
BQ3052SS	Brake Hose Retaining Clip
BQ4511SS	Tube Nut Male (M10 x 1 - 3/16")
BQ4513SS	Tube Nut Male (M12 x 1 - 1/4")
BQ5555SS	Tube Nut Male (3/8" x 24NF - 3/16")
BQ5842SS	Tube Nut Male (7/16" x 24NS - 3/16")
BQ8093SS	Banjo Bolt - 3/8" x 24NF x 1"L.
BQ8095SS	Banjo Bolt - M10 x 1 x 1"L.
BQ8099SS	Banjo Bolt - M10 x 1.25 x 1"L.
HF01SS	Fitting - Lifesaver - 3/16" Countersink
HF06SS	Fitting - Male Swivel Nut 7/16" x 24NS (90°)
HF07SS	Fitting - Male Swivel Nut 7/16" x 24NS (45°)
HF09SS	Fitting - Female Swivel Nut 3/8" x 24NF (Straight)
HF10SS	Fitting - Female Swivel Nut 3/8" x 24NF (45°)
HF11SS	Fitting - Female Swivel Nut 3/8" x 24NF (90°)
HF12SS	Fitting - Female Swivel Nut 7/16" x 20NF (Straight)
HF13SS	Fitting - Female Swivel Nut 7/16" x 20NF (45°)
HF14SS	Fitting - Female Swivel Nut 7/16" x 20NF (90°)
HF15SS	Fitting - Male Swivel Nut 7/16" x 24NS
HF16SS	Fitting - Male Swivel Nut 3/8" x 24NF
HF17SS	Fitting - Male Swivel Nut 3/8" x 24NF (90°)
HF30SS	Fitting - 3/16" Compression
HF31SS	Fitting - 1/4" Compression
HF33SS	Fitting - Male Swivel Nut 3/8" x 24NF (45°)
HFB09SS	Fitting - Banjo 10 x 10mm
HFB34SS	Fitting - Banjo 10 x 8mm (Extra long Neck)
HFB37SS	Fitting - Banjo 10 x 10mm (Extra long Neck)
HFIF01SS	Fitting - Female 3/8" x 24NF
HFIF02SS	Fitting - Female 7/16" x 24NS
HFIM01SS	Fitting - Male 3/8" x 24NF Short
HFIM03SS	Fitting - Male 7/16" x 20NF Short
HFIM19SS	Fitting - Male 1/8" x 27NPTF
HFMF04SS	Fitting - Female M10 x 1 (17mm Flats)
HFMM06SS	Fitting - Male M10 x 1 (Short)



Fitting Joint Supports

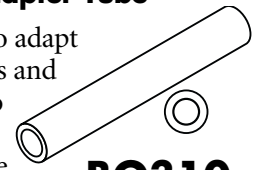
PART NO.	DESCRIPTION
BQ15BK	High Temp Material - Black
BQ15BL	High Temp Material - Blue
BQ15GR	High Temp Material - Green
BQ15GY	High Temp Material - Grey
BQ15RD	High Temp Material - Red
BQ16	Aluminum (Off Road Use Only)

Stainless Steel Braided Brake Hose

PART NO.	SIZE	JACKET COLOR
BQ301	1/8" ID	Nil
BQ303	1/8" ID	Clear
BQ303BK	1/8" ID	Smoke/Black
BQ303BL	1/8" ID	Blue
BQ303GR	1/8" ID	Green
BQ303RD	1/8" ID	Red

Clear Center Fitting Adapter Tube

Allows you to adapt center fittings and accessories to non-jacketed hose available in 10' lengths.



BQ310

Allows you to adapt center fittings and accessories to jacketed hose available in 10' lengths.



BQ311

TOOLS

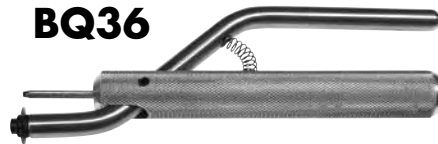


BQ1019

Hose Expander

Ideal for the pre-installation of fittings into 1/8" ID Teflon braided hose. Three sided tool fits into a drill chuck for easy application. Simply place tool into drill chuck & rotate into end of hose.

BQ36



Skiving Tool

This handy tool is the ultimate tool for skiving the jacket off 1/8" ID braided hose – cuts cleanly and square to the correct length every time. The incorporated mandrel also acts as a hose expander to help with the installation of the fitting. Made in the USA.

BQ42525



Replacement Cutting Wheel

BQ2006



Replacement Jaws BQ2006A

Stainless Steel Braided Hose Shears

Heavy duty shears for a clean cut every time – Portable & light weight for ease of use – Suitable for cutting hose to 1/2" OD.

Replacement jaws available (BQ2006A).

BQ2006B



Mount bracket allows you to secure shears so that you can cut hose with one hand.

METAL TUBE PROGRAM

Join the Revolution!



EziBend Tube

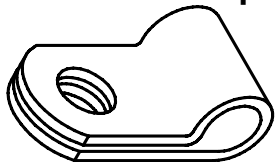
Convert your steel tubes to non rusting Ezibend tube that:

- Complies with DOT standards.
- Doesn't rust or corrode.
- Very easy to work with.
- Does not require bending tools.
- OEM on luxury European vehicles.
- Polishes to a brilliant finish.
- Available in sizes 3/16", 1/4", 5/16", 3/8".

EziBend Tube

PART NO.	OD SIZE	WALL THICKNESS	LENGTH
T187-100CN	3/16"	.028"	100'
T187-25CN	3/16"	.028"	25'
T250-25CN	1/4"	.028"	25'
T312-25CN	5/16"	.028"	25'
T375-25CN	3/8"	.028"	25'

Brake Tube Clamp

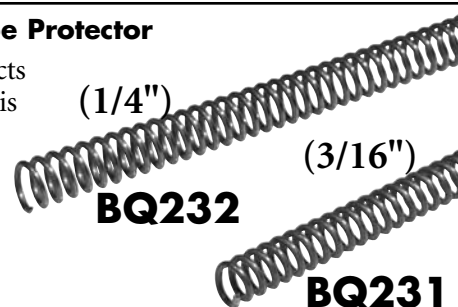


Non Rusting White Nylon

PART NO.	SIZE
BQ249	3/16"
BQ250	1/4"

Brake Tube Protector

- No rust Stainless Steel Spring protects your brake tube from gravel & debris
- Easy to install
- Just cut to length
- Available in sizes 3/16" ID & 1/4" ID in 3 feet lengths
- Can be polished to shine.



BQ231

BQ232

Polished Stainless Steel Tube

This brightly finished tube is annealed which makes it easy to flare and bend.

PART NO.	OD SIZE	WALL THICKNESS	LENGTH
T187-20SS	3/16"	.028"	20'
T250-20SS	1/4"	.028"	20'
T312-20SS	5/16"	.028"	20'
T375-20SS	3/8"	.028"	20'

Tube Nuts

PART NO.	TYPE	THREAD	TUBE
BQ57	Female	7/16" x 20NF	1/4"
BQ72	Male	M10 x 1	3/16" DIN
BQ2577	Male	7/16" x 24NS	1/4"
BQ2578	Male	1/2" x 20NF	5/16"
BQ4276	Male	3/8" x 20BSF	3/16
BQ4277	Male	7/16" x 20NF	1/4"
BQ4285	Male	3/8" x 2M4NF	3/16"
BQ4510	Male	M9 x 1	3/16"
BQ4511	Male	M10 x 1	3/16"
BQ4512	Male	M10 x 1.25	3/16"
BQ4513	Male	M12 x 1	1/4"
BQ5555	Male	3/8" x 24NF	3/16"
BQ5842	Male	7/16" x 24NS	3/16"
BQ6118	Male	7/16" x 20NF	3/16"
BQ9174	Female	M12 x 1	3/16"
BQ9175	Female	M10 x 1	3/16"
BQ9176	Female	3/8" x 24NF	3/16"
BQ9177	Female	1/2" x 20NF	5/16"
BQ9178	Female	M12 x 1.5	1/4"
BQ9179	Female	M12 x 1	1/4"
BQ9180	Male	M12 x 1	3/16"
BQ9181	Male	5/8" x 18NF	3/8"
BQ9182	Male	M12 x 1.5	6mm
BQ9183	Male	M14 x 1.5	6mm
BQ9184	Male	1/2" x 20NF	3/16"
BQ9185	Male	9/16" x 18NF	3/16"
BQ9186	Male	9/16" x 18NF	1/4"
BQ9187	Male	1/2" x 20NF	1/4"
BQ9188	Male	M10 x 1.5	3/16"
BQ9189	Male	M11 x 1.0	3/16"
BQ9190	Male	M11 x 1.25	3/16"
BQ9191	Male	M11 x 1.5	3/16"
BQ9192	Male	M12 x 1.25	3/16"
BQ9193	Male	M12 x 1.5	3/16"
BQ9194	Male	M13 x 1.0	3/16"
BQ9195	Male	M13 x 1.25	3/16"
BQ9196	Male	M13 x 1.5	3/16"
BQ9197	Male	M14 x 1.5	5/16"
BQ9198	Male	M16 x 1.5	5/16"
BQ9199	Male	M18 x 1.5	5/16"

Fastest Flaring Tool in the West

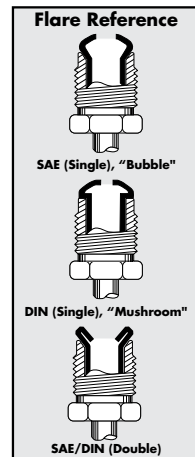


Double Flaring Tool:

- Creates single and double flares on tube sizes 3/16" - 1/4" - 5/16" - 3/8" - 1/2" - 6mm - 8mm - 10mm - 12mm and the special 4.75mm DIN single flares found on European vehicles
- Punch turrets has OP-1 and OP-2 punches positioned side by side for efficiency
- Produces flares in a matter of seconds
- Provides the convenience and efficiency of lever cam operation
- Features automatic punch extraction
- Screw clamp for accurate die alignment
- Comes in a rugged plastic case

BQ27008

Double Flaring Tool has become the industry standard for its speed, accuracy, and reliability. It produces convex and double flares to SAE and DIN standards on all light wall annealed tubing.



Die & Punch Guide

Bubble & Double Flare

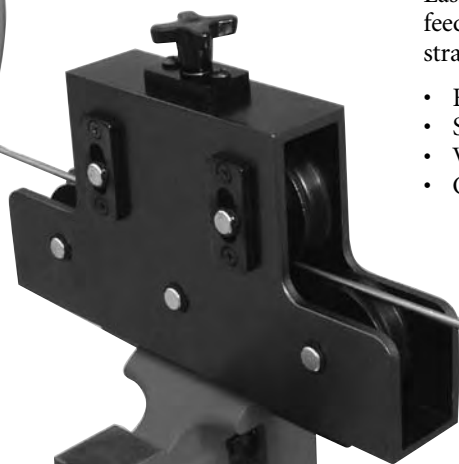
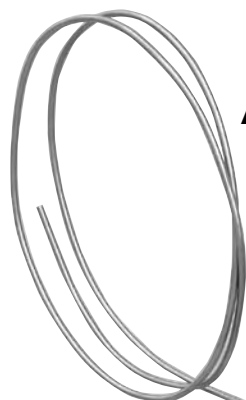
TUBE SIZE	DIE NO.	PUNCH NO. OP.- 1	PUNCH NO. OP.- 2
3/16"	BQ27031	BQ27051	BQ27071
1/4"	BQ27032	BQ27052	BQ27071
5/16"	BQ27033	BQ27053	BQ27072
3/8"	BQ27034	BQ27054	BQ27072
1/2"	BQ27035	BQ27055	BQ27073
6mm	BQ27042	BQ27052	BQ27071
8mm	BQ27043	BQ27053	BQ27072
10mm	BQ27044	BQ27054	BQ27072
12mm	BQ27045	BQ27055	BQ27073

DIN Flare

TUBE SIZE	DIE NO.	PUNCH NO.
4.75mm	BQ27041	BQ27061
6mm	BQ27047	BQ27062
8mm	BQ27048	BQ27063
10mm	BQ27049	BQ27064
12mm	BQ27050	BQ27065

Straightens Coiled Tube...Fast

At Last...A Tool To Straighten Tube That's Economical



BQ1025

Easily straightens light wall tubing from 3/16" to 1/2." Simply feed your coiled tube into the straightener and it comes out straight on the other side.

- Fully adjustable
- Smooth operation (roller bearing guides)
- Vice or bracket mounted
- Can be used on all types of annealed tubing (even stainless)

The Handiest Tool in a Brake Mechanic's Toolbox

Brake Tube Pliers

For use on 3/16" brake tube



Convenient and Quality Crafted

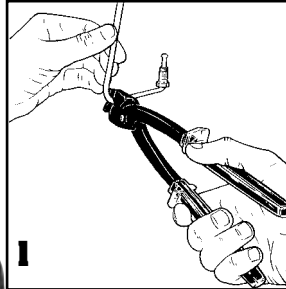
Brake mechanics often testify that this tool is the handiest tool in their tool boxes. Brake Tube Pliers are lightweight, yet strong enough for any brake job.

Brake Tube Pliers are designed to work efficiently, securely, and accurately in tight spaces, without

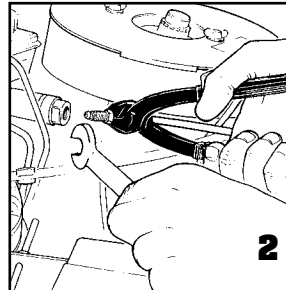
damaging the brake tube.

So, when the job calls for working with 3/16" brake tube, *Brake Tube Pliers will make life as easy as **1. 2. 3.***

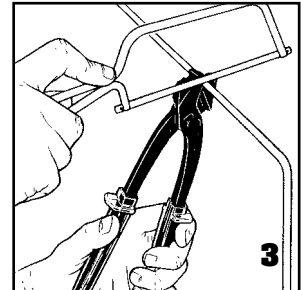
Brake Tube Pliers are distributed exclusively by BrakeQuip and manufactured in Europe.



Brake Tube Pliers allows a tight 90° bend on the brake tube, right at the tube nut.



Brake Tube Pliers allow you to align the tube nut during assembly. In addition, it grips 3/16" brake tube securely without damaging it.



The hardened, square face on the back of Brake Tube Pliers acts as a guide to cut 3/16" brake tube squarely.

The Best Tube Bender in the Business



- Bends 3/16" & 1/4" - 4.75mm & 6mm OD tube
- This tool has a unique rolling action that is essential when bending plastic or epoxy coated tube
- Bends of up to 180° can be made without harming the coating of the tube
- Removable handle for ease of use
- Vice lug on handle for one hand operation
- Able to do tight bends without kinking

MISCELLANEOUS

BQB06



Universal Mounting Bracket

Universal hole size allows most brake hoses to be securely mounted. Bracket can be screwed on, riveted or welded to frame. Rounded finish for professional looks.

BQ3052



Brake Hose Retaining Clip

Universal clip design secures most brake hoses to mounting surface. Also available in polished stainless steel.

BQ153



Weld On Fitting

The ultimate problem solver for connecting metal tube to hose.

FEATURES:

- Universal countersink hole for 3/16" & 1/4" tube sizes
- Popular No. 3 JIC take off point

BQ7812



Three-way Tee with bracket

- 3/8 x 24NF x 3 (Inverted Seat)
- Locating bracket avoids twisting

BQ222



Universal tandem trailer fitting (4 way)

- 3/8 x 24NF x 4 (Inverted Seat)
- Secured by bulkhead mount (Use BQ13 bulkhead nut)
- Eliminates fittings and joins
- Any excess ports can be blanked off with a BQ19 plug

CONSUMABLES

Pre-fluxed Brazing Rods



BQ33

A brazing rod for the professional brazing of steel, stainless or brass – Designed for brazing high pressure fittings – Convenient pre-fluxed rod makes it a breeze to braze (No flux required) – Contains 56% silver and no Cadmium for safe use. (1/4 lb. - 8 rods per pack)

Lubricants



High Pressure Grease Lubricant

A high pressure & high temperature grease lubricant in a 500ml aerosol can, ideal for getting into hard to get at places. High adhesive strength & water resistant – comes with a directional nozzle for easy application.

Suitable for extreme pressure applications.

W893106

Teflon Dry Lubricant

A Teflon Dry Lube in a 300ml aerosol can. A transparent lubricant that suits most surfaces & dry to the touch - Ideal for applications where you need the lubrication but not the mess.

W893550



Tube Nuts

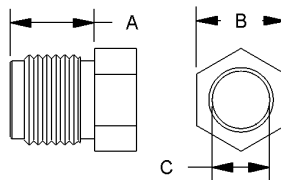
Most BrakeQuip tube nuts have two distinct features for easier installation & dismantling.

1. **A small step on end of the thread**
– This allows for easier installation because the step acts as a guide & makes it easier to start the thread. It also gives the thread clearance at the end which eliminates the problem of flaring out when over tightened. If this happens, the nut can be very difficult to remove & can some times destroy the thread when removed.
2. **A thread relief under the hex** – apart from looking more professional, this allows the nut to be screwed down right up to the hex if necessary.

FEATURES:

- Male & Female
- Imperial & Metric Threads
- Various tube sizes
- Zinc plated for corrosion resistance

Assortment kits available.
To order see Part No. BQ7005 & BQ7006.



PART NO.	TYPE	THREAD	A	B	C
BQ57	Female	7/16" x 20NF	3/8"	9/16"	1/4"
BQ72	Male	M10 x 1	14mm	10mm	3/16" DIN
BQ2577	Male	7/16" x 24NS	13mm	7/16"	1/4"
BQ2578	Male	1/2" x 20NF	12mm	1/2"	5/16"
BQ4276	Male	3/8" x 20BSF	16mm	3/8"	3/16"
BQ4277	Male	7/16" x 20NF	18mm	7/16"	1/4"
BQ4285	Male	3/8" x 24NF	16mm	3/8"	3/16"
BQ4510	Male	M9 x 1	14mm	10mm	3/16"
BQ4511	Male	M10 x 1	14mm	10mm	3/16"
BQ4512	Male	M10 x 1.25	15mm	10mm	3/16"
BQ4513	Male	M12 x 1	15mm	12mm	1/4"
BQ5555	Male	3/8" x 24NF	10mm	3/8"	3/16"
BQ5842	Male	7/16" x 24NS	10mm	7/16"	3/16"
BQ6118	Male	7/16" x 20NF	18mm	7/16"	3/16"
BQ9174	Female	M12 x 1	10mm	16mm	3/16"
BQ9175	Female	M10 x 1	10mm	1/2"	3/16"
BQ9176	Female	3/8" x 24NF	10mm	1/2"	3/16"
BQ9177	Female	1/2" x 20NF	7/16"	5/8"	5/16"
BQ9178	Female	M12 x 1.5	10mm	16mm	1/4"
BQ9179	Female	M12 x 1	10mm	16mm	1/4"
BQ9180	Male	M12 x 1	15mm	12mm	3/16"
BQ9181	Male	5/8" x 18NF	14mm	5/8"	3/8"
BQ9182	Male	M12 x 1.5	13mm	12mm	6mm
BQ9183	Male	M14 x 1.5	15mm	14mm	6mm
BQ9184	Male	1/2" x 20NF	13mm	1/2"	3/16"
BQ9185	Male	9/16" x 18NF	14mm	9/16"	3/16"
BQ9186	Male	9/16" x 18NF	14mm	9/16"	1/4"
BQ9187	Male	1/2" x 20NF	14mm	1/2"	1/4"
BQ9188	Male	M10 x 1.5	15mm	10mm	3/16"
BQ9189	Male	M11 x 1.0	15mm	11mm	3/16"
BQ9190	Male	M11 x 1.25	15mm	11mm	3/16"
BQ9191	Male	M11 x 1.5	15mm	11mm	3/16"
BQ9192	Male	M12 x 1.25	15mm	12mm	3/16"
BQ9193	Male	M12 x 1.5	15mm	12mm	3/16"
BQ9194	Male	M13 x 1.0	15mm	13mm	3/16"
BQ9195	Male	M13 x 1.25	15mm	13mm	3/16"
BQ9196	Male	M13 x 1.5	15mm	13mm	3/16"
BQ9197	Male	M14 x 1.5	15mm	14mm	5/16"
BQ9198	Male	M16 x 1.5	16mm	16mm	5/16"
BQ9199	Male	M18 x 1.5	16mm	18mm	5/16"

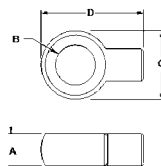
WELD ON BANJO HEADS

Weld On Banjo Heads

Designed to make plumbing easy when banjo fittings are necessary.

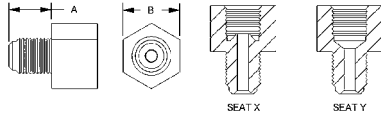
Simply braze 3/16" (4.75mm) tube to banjo head.

Can also be countersunk for 1/4" tube.



PART NO.	A	B	C	D
BQ223	8mm	10mm	17mm	25mm
BQ224	10mm	10mm	18mm	25mm
BQ225	10mm	7/16"	19mm	25mm

THREAD ADAPTERS



Male - Female Thread Adapters

Save time & hassle when adapting different threads quickly & easily. Universal Male thread can be sealed with all sealing combinations.

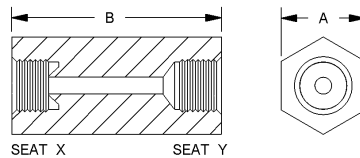
FEATURES:

- Imperial & Metric Threads
- Inverted seat & drill point seats available
- Zinc plated for corrosion resistance

Assortment kit available.
To order see Part No. BQ7004.

PART NO.	MALE THREAD	FEMALE THREAD	SEAT TYPE	A	B
BQ40	M10 x 1	M10 x 1	Y	13mm	13mm
BQ41	M10 x 1	M10 x 1.25	X	12mm	13mm
BQ42	M10 x 1.25	M10 x 1	X	12mm	13mm
BQ43	M12 x 1	M10 x 1	X	12mm	16mm
BQ44	M10 x 1	M12 x 1	X	12mm	16mm
BQ45	3/8" x 24NF	7/16" x 24NS	X	12mm	9/16"
BQ46	7/16" x 24NS	3/8" x 24NF	X	12mm	9/16"
BQ47	7/16" x 20NF	3/8" x 24NF	X	12mm	9/16"
BQ48	1/8" x 27NPT	3/8" x 24NF	X	12mm	1/2"
BQ49	M10 x 1	3/8" x 24NF	X	12mm	13mm
BQ50	3/8" x 24NF	M10 x 1	X	12mm	1/2"
BQ120	1/2" x 20NF	3/8" x 24NF	X	12mm	16mm
BQ121	9/16" x 20NS	3/8" x 24NF	X	12mm	11/16"
BQ122	1/2" x 20NF	7/16" x 24NS	X	12mm	16mm
BQ123	9/16" x 18NF	7/16" x 24NS	X	12mm	11/16"
BQ124	9/16" x 18NF	3/8" x 24NF	X	12mm	11/16"
BQ125	M10 x 1	3/8" x 24NF	Y	12mm	13mm
BQ126	7/16" x 20NF	M10 x 1	Y	12mm	9/16"
BQ127	7/16" x 24NS	1/2" x 20NF	X	12mm	5/8"

FEMALE TUBE JOINERS



Female Tube Joiners

The recommended way to legally join two tubes together. BrakeQuip tube joiners allow you to join tubes professionally & safely.

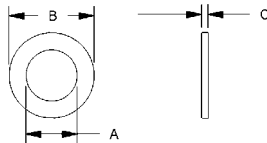
FEATURES:

- Imperial & Metric Threads
- Inverted seat & drill point seats available
- Zinc plated for corrosion resistance

Assortment kit available.
To order see Part No. BQ7009.

PART NO.	THREAD	SEAT TYPE	A	B
BQ110	3/8" x 24NF	X	1/2"	22.2mm
BQ111	7/16" x 24NS	X	9/16"	25.0mm
BQ112	1/2" x 20NF	X	5/8"	25.0mm
BQ113	5/8" x 18NF	X	3/4"	29.0mm
BQ114	M10 x 1	Y	13.0mm	29.0mm
BQ115	3/8" x 24NF	Y	1/2"	29.0mm
BQ116	M12 x 1	X	5/8"	25.0mm
BQ117	M10 x 1	X	13mm	22mm

COPPER WASHERS



Copper Washers

Heavy duty copper washers for maximum sealing power. The legal & professional way to seal high pressure hydraulic braking systems.

FEATURES:

- Sizes to fit all banjo bolts
- Reduced outer diameter for less interference
- Annealed for maximum sealing

Assortment kit available.
To order see Part No. BQ7000.

PART NO.	NOMINAL ID	A	B	C
BQ813	8mm	8.1	13.00	1.3
BQ3858	3/8"	9.6	15.6	1.5
BQ1016	10mm	10.1	16.00	1.5
BQ1118	7/16"	11.2	18.00	1.5
BQ1218	12mm	12.1	18.00	1.5
BQ1320	1/2"	12.8	20.00	2.0
BQ1421	9/16"	14.3	22.00	2.0
BQ1522	15mm	15.1	22.00	2.0
BQ1624	16mm	16.1	24.00	2.0

BULKHEAD NUTS

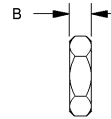
Bulkhead Nuts

The biggest range of brake hose bulkhead nuts in the country.

FEATURES:

- Zinc plated for corrosion resistance
- Imperial & Metric Threads
- Heavy duty construction

Assortment kit available.
To order see Part No. BQ7008.



PART NO.	THREAD	A	B
BQ13	5/8" x 18NF	15/16"	8mm
BQ77	11/16" x 16NF	1"	8mm
BQ78	3/8" x 24NF	1/2"	5mm
BQ79	M10 x 1	13mm	5mm
BQ80	7/16" x 20NF	5/8"	6mm
BQ81	M12 x 1	19mm	6mm
BQ82	M12 x 1.5	19mm	6mm
BQ83	1/2" x 20NF	3/4"	6mm
BQ84	3/4" x 16NF	1-1/16"	8mm
BQ85	20 x 1.5mm	27mm	8mm
BQ86	18 x 1.5mm	25mm	8mm
BQ87	16 x 1.5mm	22mm	7mm
BQ88	14 x 1.5mm	19mm	6mm
BQ89	7/8" x 18NS	1-1/8"	8mm

3 WAY TUBE TEE'S WITH MOUNTING HOLE

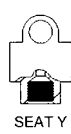
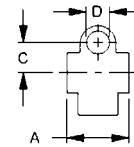
3 Way Tube Tee's with Mounting Hole

The ideal fitting for legally joining 3 tubes together. Also features a mounting hole for secure installation.

FEATURES:

- Imperial & Metric Threads
- Inverted seat & drill point seats available
- Zinc plated for corrosion resistance

Assortment kit available.
To order see Part No. BQ7002.



PART NO.	THREAD	SEAT TYPE	A	B	C	D
BQ56A	3/8" x 24NF	X	28mm	1/2"	7.70mm	5/16"
BQ90	3/8" x 24NF	Y	28mm	1/2"	10.75mm	5/16"
BQ91	M10 x 1	X	24mm	1/2"	10.75mm	10mm
BQ92A	7/16" x 24NS	X	1-1/4"	14mm	9.00mm	5/16"
BQ93	1/8" x 27NPT	Y	26mm	1/2"	10.75mm	5/16"
BQ94	7/16" x 20NF	Y	30mm	14mm	10.75mm	3/8"
BQ95A	M10 x 1	Y	1-1/4"	14mm	10.00mm	7mm

BANJO UNIONS

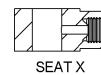
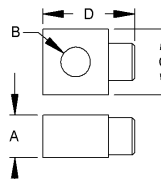
Banjo Unions

These fittings allow you to convert most joints to a sharp 90 degrees legally & professionally. The swivel feature of these fittings gives you more flexibility in installation.

FEATURES:

- Imperial & Metric Threads
- Zinc plated for corrosion resistance

Assortment kit available.
To order see Part No. BQ7001.



PART NO.	THREAD	SEAT TYPE	A	B	C	D
BQ60	3/8" x 24NF	X	1/2"	10mm	17mm	27mm
BQ61	M10 x 1	X	13mm	10mm	17mm	27mm
BQ62	7/16" x 24NS	X	14mm	7/16"	18mm	28mm
BQ63	1/2" x 20NF	X	16mm	1/2"	20mm	30mm

BANJO ADAPTERS

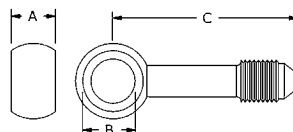
Banjo Adapters

These fittings allow you to convert most joints to a sharp 90 degrees legally & professionally. The swivel feature of these fittings gives you more flexibility in installation.

FEATURES:

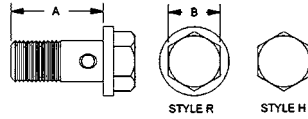
- Imperial & Metric Threads
- Zinc plated for corrosion resistance

Assortment kit available.
To order see Part No. BQ7001.



PART NO.	A	B	C	THREAD
BQ150	10mm	10mm	42mm	3/8" x 24NF (No. 3 JIC)
BQ151	10mm	10mm	21mm	3/8" x 24NF (No. 3 JIC)
BQ152	10mm	10mm	21mm x (2)	3/8" x 24NF (No. 3 JIC)
BQ155	10mm	10mm	42mm	7/16" x 20NF (No.4 JIC)

BANJO BOLTS



Banjo Bolts

A banjo bolt for every application.

FEATURES:

- Reduced head size for appearance & less interference
- Zinc plated for corrosion resistance
- Imperial & Metric Threads

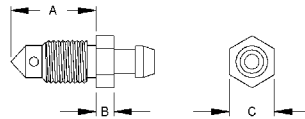
Assortment kit available.

To order see Part No. BQ7007.

PART NO.	THREAD	HEAD STYLE	A	B
BQ8078	M12 x 1.25	R	25mm [1"]	14mm
BQ8083	M10 x 1	H	34.5mm [1-3/8"]*	14mm
BQ8084	M10 x 1.25	H	34.5mm [1-3/8"]*	14mm
BQ8085	3/8" x 24NF	H	34.5mm [1-3/8"]*	9/16"
BQ8086	M10 x 1.5	R	24mm [15/16"]	11mm
BQ8087	M11 x 1.25	R	24mm [15/16"]	5/8"
BQ8088	M10 x 1.5	R	27mm [1-1/16"]	10mm
BQ8089	7/16" x 20NF	R	24mm [15/16"]	7/16"
BQ8090	7/16 x 24NS	R	27mm [1-1/16"]	1/2"
BQ8092	M12 x 1.5	R	25mm [1"]	14mm
BQ8093	3/8" x 24NF	R	25mm [1"]	14mm
BQ8094	M10 x 1	R	26mm [1"]	14mm
BQ8095	M10 x 1	R	22mm [7/8"]	12mm
BQ8096	7/16" x 20NF	R	27mm [1-1/16"]	11mm
BQ8097	1/2" x 20NF	R	30mm [1-3/16"]	9/16"
BQ8098	M12 x 1	R	21mm [13/16"]	13mm
BQ8099	M10 x 1.25	R	22mm [7/8"]	12mm

* Double Banjo Bolt.

BLEED SCREWS



Bleed Screws

These popular bleed screws makes replacement easy.

FEATURES:

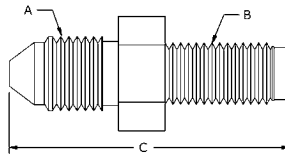
- Heavy duty hex allows for good gripping
- Zinc plated for corrosion resistance
- Imperial & Metric Threads

Assortment kit available.

To order see Part No. BQ7011.

PART NO.	THREAD	A	B	C
BQ4433	3/8" x 24NF	20mm	5mm	10mm
BQ4434	M10 x 1	23mm	6mm	10mm
BQ4435	M10 x 1	19mm	6mm	10mm

MALE TEST ADAPTERS



Male Test Adapters

These handy test Adapters can be used for a variety of applications including tapping into your hydraulic system for pressure readings. Will fit most bleed screw openings.

FEATURES:

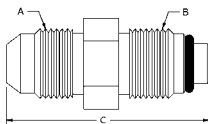
- Imperial & Metric Threads
- Take off point are universal JIC ends
- Zinc plated for corrosion resistance

Assortment kit available.

To order see Part No. BQ7010.

PART NO.	A	B	C
BQ128	3/8" x 24NF (No. 3 JIC)	M10 x 1.25	36mm
BQ129	3/8" x 24NF (No. 3 JIC)	M10 x 1.00	36mm
BQ130	3/8" x 24NF (No. 3 JIC)	M10 x 1.5	60mm
BQ131	7/16" x 20NF (No. 4 JIC)	3/8" x 24NF	37mm
BQ132	3/8" x 24NF (No. 3 JIC)	1/4" x 28NF	36mm
BQ133	3/8" x 24NF (No. 3 JIC)	5/16" x 24NF	36mm
BQ134	7/16" x 20NF (No. 4 JIC)	7/16" x 24NS	37mm
BQ135	3/8" x 24NF (No. 3 JIC)	3/8" x 24NF	36mm
BQ144	7/16" x 20NF (No. 4 JIC)	M12 x 1.00	37mm
BQ145	7/16" x 20NF (No. 4 JIC)	M10 x 1.00	30mm

BUMP TUBE ADAPTERS



Bump Tube Adapters

Handy, hard to get tube adapters for power steering & fuel systems.

FEATURES:

- Comes with a high temperature Viton "O" ring
- Imperial & Metric Threads

Assortment kit available.

To order see Part No. BQ7003.

PART NO.	A	B	C
14MMBT-6MJ	9/16" x 18NF (No.6 JIC)	M14 x 1.5	39mm
16MMBT-6FI	5/8" x 18NF (Inverted Seat)	M16 x 1.5	32mm
16MMBT-6MJ	9/16" x 18NF (No.6 JIC)	M16 x 1.5	39mm
5MBT-5MJ	1/2" x 20NF (No. 5 JIC)	1/2" x 20NF	37mm
7MBT-6MJ	9/16" x 18NF (No.6 JIC)	11/16" x 18NF	41mm

ASSORTMENT KITS

Copper Washers

BQ7000

PART NO.	DESCRIPTION	QTY.
BQ1016	10mm ID	20
BQ1118	7/16" ID	20
BQ1218	12mm ID	20
BQ1320	1/2" ID	20
BQ1421	9/16" ID	10
BQ1522	15mm ID	10
BQ1624	16mm ID	10
BQ3858	3/8" ID	20

Banjo Unions & Adapters

BQ7001

PART NO.	DESCRIPTION	QTY.
BQ60	Union 10mm Hole x 1/2" (T) - 3/8" x 24NF (IS)	4
BQ61	Union 10mm Hole x 13mm (T) - M10x1 (IS)	4
BQ62	Union 7/16" Hole x 14mm (T) - 7/16" x 24NS (IS)	4
BQ63	Union 1/2" Hole x 16mm (T) - 1/2" x 20NF (IS)	4
BQ150	Adapter 10 x 10mm (Ext.) - 3/8" x 24NF (No. 3 JIC)	4
BQ151	Adapter 10 x 10mm - 3/8" x 24NF (No. 3 JIC)	4

T = Thickness IS = Inverted Seat

3-Way Tube Tee with Mounting Hole

BQ7002

PART NO.	DESCRIPTION	QTY.
BQ56A	3/8" x 24NF (IS) 5/16" Mount Hole	2
BQ90	3/8" x 24NF (DPS) 5/16" Mount Hole	2
BQ91	M10 x 1 (IS) 10mm Mount Hole	2
BQ92A	7/16" x 24NS (IS) 5/16" Mount Hole	2
BQ93	1/8" x 27NPT 5/16" Mount Hole	2
BQ94	7/16" x 20NF (DPS) 3/8" Mount Hole	2

Bump Tube Adapters

BQ7003

PART NO.	DESCRIPTION	QTY.
14MMBT-6MJ	M14 x 1.5 - 9/16" x 18NF (No. 6 JIC)	4
16MMBT-6FI	M16 x 1.5 - 5/8" x 18NF (Female Inverted)	4
16MMBT-6MJ	M16 x 1.5 - 9/16" x 18NF (No. 6 JIC)	4
5MBT-5MJ	1/2" x 20NF - 1/2" x 20NF (No. 5 JIC)	4
7MBT-6MJ	11/16" x 16N 9/16" x 18NF (No. 6 JIC)	4

Male - Female Thread Adapters

BQ7004

PART NO.	DESCRIPTION	QTY.
BQ40	(M) M10 x 1 (F) M10 x 1 (DPS)	4
BQ41	(M) M10 x 1 (F) M10 x 1.25 (IS)	4
BQ42	(M) M10 x 1.25 (F) M10 x 1 (IS)	4
BQ43	(M) M12 x 1 (F) M10 x 1 (IS)	4
BQ44	(M) M10 x 1 (F) M12 x 1 (IS)	4
BQ45	(M) 3/8" x 24NF (F) 7/16" x 24NS (IS)	4
BQ46	(M) 7/16" x 24NS (F) 3/8" x 24NF (IS)	4
BQ47	(M) 7/16" x 20NF (F) 3/8" x 24NF (IS)	4
BQ48	(M) 1/8" x 27NPT (F) 3/8" x 24NF (IS)	4
BQ49	(M) M10 x 1 (F) 3/8" x 24NF (IS)	4
BQ50	(M) 3/8" x 24NF (F) M10 x 1 (IS)	4
BQ120	(M) 1/2" x 20NF (F) 3/8" x 24NF (IS)	4
BQ121	(M) 9/16" x 20NS (F) 3/8" x 24NF (IS)	4
BQ122	(M) 1/2" x 20NF (F) 7/16" x 24NS (IS)	4
BQ123	(M) 9/16" x 18NF (F) 7/16" x 24NS (IS)	4
BQ124	(M) 9/16" x 18NF (F) 3/8" x 24NF (IS)	4
BQ125	(M) M10 x 1 (F) 3/8" x 24NF (DPS)	4
BQ126	(M) 7/16" x 20NF (F) M10 x 1 (DPS)	4

Metric Tube Nuts

BQ7005

PART NO.	DESCRIPTION	QTY.
BQ72	Male M10 x 1 - 3/16" Tube (DIN)	4
BQ4511	Male M10x1 - 3/16" Tube	10
BQ4512	Male M10x1.25 - 3/16" Tube	6
BQ4513	Male M12x1 - 1/4" Tube	6
BQ9174	Female M12 x 1 - 3/16" Tube	4
BQ9175	Female M10 x 1 - 3/16" Tube	4
BQ9178	Female M12 x 1.5 - 1/4" Tube	4
BQ9179	Female M12 x 1 - 1/4" Tube	4
BQ9180	Male M12 x 1 - 3/16" Tube	4
BQ9182	Male M12 x 1.5 - 6mm Tube	4
BQ9183	Male M14 x 1.5 - 6mm Tube	4
BQ9188	Male M10 x 1.5 - 3/16" Tube	4
BQ9191	Male M11 x 1.5 - 3/16" Tube	4
BQ9192	Male M12 x 1.25 - 3/16" Tube	4
BQ9193	Male M12 x 1.5 - 3/16" Tube	4

Imperial Tube Nuts

BQ7006

PART NO.	DESCRIPTION	QTY.
BQ57	Female 7/16" x 20NF Thread - 1/4" Tube	4
BQ2577	Male 7/16" x 24NS Thread - 1/4" Tube	10
BQ2578	Male 1/2" x 20NF Thread - 5/16" Tube	6
BQ4276	Male 3/8" x 20BSF Thread - 3/16" Tube	4
BQ4277	Male 7/16" x 20NF Thread - 1/4" Tube	4
BQ4285	Male 3/8" x 24NF Thread - 3/16" Tube	4
BQ5555	Male 3/8" x 24NF Thread - 3/16" Tube	10
BQ5842	Male 7/16" x 24NS Thread - 3/16" Tube	10
BQ6118	Male 7/16" x 20NF Thread - 3/16" Tube	6
BQ9176	Female 3/8" x 24NF Thread - 3/16" Tube	4
BQ9177	Female 1/2" x 20NF Thread - 5/16" Tube	4
BQ9184	Male 1/2" x 20NF Thread - 3/16" Tube	4
BQ9185	Male 9/16" x 18NF Thread - 3/16" Tube	4
BQ9186	Male 9/16" x 18NF Thread - 1/4" Tube	4
BQ9187	Male 1/2" x 20NF - 1/4" Tube	4

Banjo Bolts

BQ7007

PART NO.	DESCRIPTION	QTY.
BQ8086	M10 x 1.5 L = 23mm	4
BQ8087	M11 x 1.25 L = 23mm	4
BQ8088	M10 x 1.5 L = 29mm	4
BQ8089	7/16" x 20NF L = 15/16"	4
BQ8090	7/16" x 24NS L = 1-1/16"	4
BQ8092	M12 x 1.5 L = 25mm	4
BQ8093	3/8" x 24NF L = 1"	6
BQ8095	M10 x 1 L = 22mm	6
BQ8096	7/16" x 20NF L = 1-1/16"	4
BQ8097	1/2" x 20NF L = 1-3/16" L	4
BQ8098	M12 x 1 L = 21mm	4
BQ8099	M10 x 1.25 L = 22mm	4

Bulkhead Nuts

BQ7008

PART NO.	DESCRIPTION	QTY.
BQ13	5/8" x 18NF	4
BQ77	11/16" x 18NS	2
BQ78	3/8" x 24NF	4
BQ79	M10 x 1	4
BQ80	7/16" x 20NF	4
BQ81	M12 x 1	4
BQ82	M12 x 1.5	4
BQ83	1/2" x 20NF	4
BQ84	3/4" x 16NF	2
BQ87	M16 x 1.5	2
BQ88	M14 x 1.5	2
BQ89	7/8" x 18NS	2

Female Tube Joiners

BQ7009

PART NO.	DESCRIPTION	QTY.
BQ110	3/8" x 24NF (IS)	4
BQ111	7/16" x 24NS (IS)	4
BQ112	1/2" x 20NF (IS)	4
BQ115	3/8" x 24NF (DPS)	4
BQ116	M12 x 1 (IS)	4
BQ117	M10 x 1 (IS)	4

Male Test Adapters

BQ7010

PART NO.	DESCRIPTION	QTY.
BQ130	M10 x 1.5 - 3/8" x 24NF (No. 3 JIC)	4
BQ131	3/8" x 24NF - 7/16" x 20NF (No. 4 JIC)	4
BQ132	1/4" x 28NF - 3/8" x 24NF (No. 3 JIC)	4
BQ133	5/16" x 24NF - 3/8" x 24NF (No. 3 JIC)	4
BQ134	7/16" x 24NS - 7/16" x 20NF (No. 4 JIC)	4
BQ135	3/8" x 24NF - 3/8" x 24NF (No. 3 JIC)	4

Fitting Plugs & Bleed Screws

BQ7011

PART NO.	DESCRIPTION	QTY.
BQ18	Fitting Plug M10 x 1	6
BQ19	Fitting Plug 3/8" x 24NF	6
BQ26	Fitting Plug 7/16" x 24NS	6
BQ4433	Bleed Screw 3/8" x 24NF	6
BQ4434	Bleed Screw M10 x 1 Long	6
BQ4435	Bleed Screw M10 x 1 Short	6

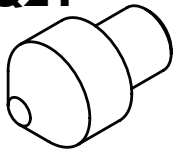
Brake Hose Plug Kit BQ7012 see page 65.

Test Adapter Kit BQ7013 see page 64.

(M) = Male (F) = Female (IS) = Inverted Seat (DPS) = Drill Point Seat (DIN) = European Style Flare

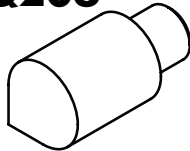
TEST CONES

BQ21



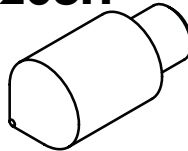
BQ21 Test Cone is designed as an aid for testing banjo fittings.

BQ206



BQ206 and BQ206H are universal Test Cones for doing most general applications.

BQ206H



Pressure Test Adapter Kit

PART NO.	QUANTITY	SIZE
BQ27	2	3/8"
BQ27H	2	3/8"
BQ28	2	10mm
BQ28H	2	10mm
BQ29	2	7/16"
BQ29H	2	7/16"
BQ30	2	12mm
BQ30H	2	12mm
BQ38	2	16mm
BQ38H	2	16mm
BQ39	2	15mm
BQ39H	2	15mm
BQ1020	1	3/8" - 5/8"

Assortment Kit BQ7013

Note: Earlier machines with threaded cones will need the test adapter BQ1023 and BQ1024 to use these quick change cones.

BQ207



BQ207 and BQ207H Test Cones are designed for testing female fittings with inverted seats.

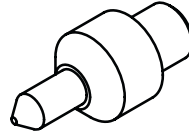
BQ207H



BQ206S

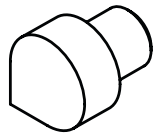


BQ206HS



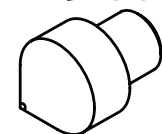
BQ206S and BQ206HS Test Cones are designed for testing female swivel fittings and female fittings with a drill point seat (DPS).

BQ208



BQ208 and BQ208H Test Cone are designed for testing extra long fittings

BQ208H



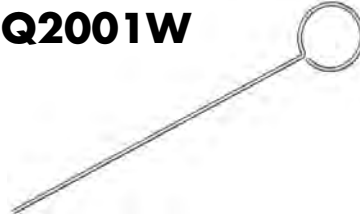
SYSTEM AIDS

BQ23



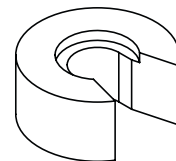
Fitting Test Spade

BQ2001W



Constriction Gauge

BQ1021A



Rear Crimp Setting Tool

BQ2005



Pro System
Crimp Head Dust Cover

BQ2008



Pro System
Crimp Setting Tool

BQ2009



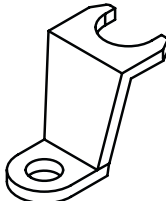
Pro System
Rear Crimp Setting Tool

BQ2010



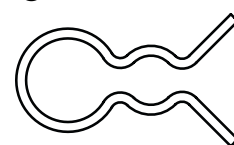
Countersink Drill Bit

BQ37



Econo System
Crimp Setting Spade

BQ1014



Econo System
Crimp Setting Clip

BQ1020



Banjo Blocking-Off Tool

A professional tool for blocking-off banjo fittings – Ideal for blocking off brake hoses with banjo fittings during maintenance & trouble shooting. Copper Washer sealing surfaces allows for sealing high pressures – Easy to use & reliable - Fits banjos holes 3/8" to 5/8".

BQ1022



Fitting Pressure Test Adapter

Ideal for pre-testing reworked fittings.

Fitting Plugs

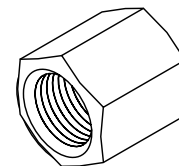
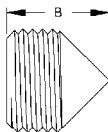
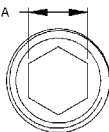
The ideal fitting for blanking off high pressure fluid ports. Fitting design has a universal seat so no sealing compounds necessary.

FEATURES:

- Zinc plated for corrosion resistance
- Imperial & Metric Threads

Assortment kit available.

To order see Part No. BQ7012.



PART NO.	DESCRIPTION	THREAD	A	B
BQ18	Male Plug	M10 x 1	5mm	10mm
BQ19	Male Plug	3/8" x 24NF	3/16"	10mm
BQ26	Male Plug	7/16" x 24NS	1/4"	11mm
BQ160	Female Plug	3/8" x 24NF	1/2"	15mm
BQ161	Female Plug	7/16" x 24NS	9/16"	15mm
BQ162	Female Plug	7/16" x 20NF	9/16"	15mm
BQ163	Female Plug	1/2" x 20NF	16mm	16mm
BQ164	Female Plug	M10 x 1	13mm	15mm
BQ165	Female Plug	M10 x 1.25	13mm	15mm
BQ166	Female Plug	M12 x 1	16mm	16mm
BQ167	Female Plug	M12 x 1.5	16mm	16mm

BQ22A



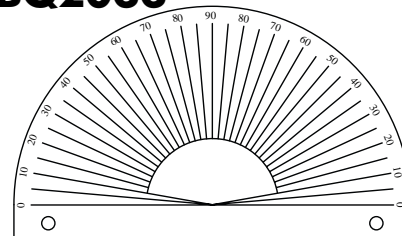
Part A - Banjo Bending Bar

BQ22B



Part B - Banjo Holder

BQ2033



Bench Mounted Angle Gauge

Can be bench mounted – Ideal for aligning tubes and fittings.

BQ2100

The Automotive Thread Gauge

Instantly identifies at least 99% of brake plumbing threads.

Check Threads in an Instant...Accurately:

- Includes the 16 most popular sizes used on braking systems
- Includes both male & female size gauging
- Comes in sturdy black plastic case
- All threads are hardened for long life
- Male thread gauge is designed with a seat so you're able to use it as a plug



Each gauge is available individually.

PART NO.	DESCRIPTION
BQ2100	Kit
BQ2100A	3/8 x 24NF
BQ2100B	7/16 x 24NS
BQ2100C	7/16 x 20NF
BQ2100D	1/2 x 20NF
BQ2100E	M10 x 1.0
BQ2100F	M10 x 1.25
BQ2100G	M12 x 1.0
BQ2100H	M12 x 1.5
BQ2100J	9/16 x 18NF
BQ2100K	9/16 x 20NS
BQ2100L	M9 x 1.0
BQ2100M	M10 x 1.5
BQ2100N	M12 x 1.25
BQ2100P	M11 x 1.25
BQ2100Q	M14 x 1.5
BQ2100R	3/8 x 20BSF

Remove Frozen Bleeder Screws like a Pro...Easily

Introducing the new Bleeder Buster Tool Kit



No more heating up
No more drilling and tapping

No more bashing
No more cursing

It is as simply as 1, 2, 3. Works every time

1. Place special size pin into end of bleeder
2. Install correct size tool into your air chisel and shock bleeder from the top
3. Unscrew bleed screw with conventional tool

How does it work? Installing the pin into the bleeder prevents the walls of the bleeder from collapsing. Applying shock to the bleeder for about three to four seconds case hardens the bleeder and shocks the threads.

- Can save you a lot of time.
- It will pay for itself very quickly.
- Works on both cast iron and aluminum.



BQ2200

Note: Bleed screw will need to be replaced after removal. A selection of replacement bleed screws supplied in kit. Additional bleed screws available.

FITTING STORAGE SYSTEM

Save Space and Find Parts Quicker



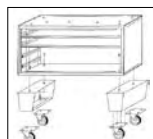
Typical Configuration
53" (H) x 41" (W) x 12" (D)

Shelves slide out for easy access. Each shelf can hold a combination of ten 3-1/2" wide shelf bins or five 7" wide shelf bins or any combination of these two sizes. Unit can be stacked and bolted together as shown in photo.

Shelf bins can be ordered separately in whatever combination best fits your needs. Three dividers come with each shelf bin as standard. Each shelf bin has 7 slots available to allow for maximum utilization. Dividers are available separately.



Typical configuration for shelf bins.
Modular design allows for customization to suit you.



Mobile Inventory
Order the BQ78192 heavy duty caster leg set and have the inventory come to you!

PART NO.	DESCRIPTION	DIMENSIONS
BQ78189	Fitting Storage Cabinet - 2 Shelf	41"(W) x 12"(H) x 12"(D)
BQ78190	Fitting Storage Cabinet - 4 Shelf	41"(W) x 21"(H) x 12"(D)
BQ78191	Stationary Legs	4"(H)
BQ78192	Heavy Duty Caster Leg Set (2 casters with brakes)	6"(H) total 10"(H)
BQ78193	Mounting Shelf	41"(W) x 6"(H) x 12"(D)
BQ78194	Fitting Bins x 10 - 3-1/2" wide (Includes 30 dividers)	3.5"(W) x 4"(H) x 11"(D)
BQ78195	Fitting Bins x 5 - 7" wide (Includes 15 dividers)	7"(W) x 4"(H) x 11"(D)
BQ78196	Dividers for 3-1/2" Bins (3 - Set)	
BQ78197	Dividers for 7" Bins (3 - Set)	

INDEX

PART NO.	PAGE NO.
5MBT-5MJ	64-65
7MBT-6MJ	64-65
14MMBT-6MJ	64-65
16MMBT-6FI	64-65
16MMBT-6MJ	64-65
BQ11	55
BQ12	55
BQ13	60, 63, 65
BQ15BK	56
BQ15BL	56
BQ15GR	56
BQ15GY	56
BQ15RD	56
BQ16	56
BQ18	65, 67
BQ19	60, 65, 67
BQ21	66
BQ22A	67
BQ22B	67
BQ23	66
BQ26	65, 67
BQ27	66
BQ27H	66
BQ28	66
BQ28H	66
BQ29	66
BQ29H	66
BQ30	66
BQ30H	66
BQ33	58
BQ36	56
BQ37	66
BQ38	66
BQ38H	66
BQ39	66
BQ39H	66
BQ40	62, 65
BQ40	62, 65
BQ41	62, 65
BQ41	62, 65
BQ42	62, 65
BQ42	62, 65
BQ43	62, 65
BQ44	62, 65
BQ45	62, 65
BQ46	62, 65
BQ47	62, 65
BQ48	62, 65
BQ49	62, 65
BQ50	62, 65

PART NO.	PAGE NO.
BQ56A	63, 65
BQ56ASS	56
BQ57	57, 61, 65
BQ60	63, 65
BQ61	63, 65
BQ62	63, 65
BQ63	63, 65
BQ65	54
BQ66	54
BQ67	54
BQ68	54
BQ69	54
BQ70	54
BQ71	55
BQ72	57, 61, 65
BQ77	63, 65
BQ78	63, 65
BQ79	63, 65
BQ80	63, 65
BQ81	63, 65
BQ82	63, 65
BQ83	63, 65
BQ84	63, 65
BQ85	63
BQ86	63
BQ87	63, 65
BQ88	63, 65
BQ89	63, 65
BQ90	63, 65
BQ91	63, 65
BQ92A	63, 65
BQ93	63, 65
BQ94	63, 65
BQ95A	63
BQ97	54
BQ98	54
BQ101	55
BQ110	62, 65
BQ111	62, 65
BQ111SS	56
BQ112	62, 65
BQ113	62
BQ114	62
BQ115	62, 65
BQ116	62, 65
BQ117	62, 65
BQ120	62, 65
BQ121	62, 65
BQ122	62, 65
BQ123	62, 65

PART NO.	PAGE NO.
BQ124	62, 65
BQ125	62, 65
BQ126	62, 65
BQ127	62
BQ128	64
BQ129	64
BQ130	64-65
BQ131	64-65
BQ132	64-65
BQ133	64-65
BQ134	64-65
BQ135	64-65
BQ144	64
BQ145	64
BQ150	63, 65
BQ151	63, 65
BQ152	63
BQ153	60
BQ155	63
BQ160	67
BQ161	67
BQ162	67
BQ163	67
BQ164	67
BQ165	67
BQ166	67
BQ167	67
BQ200	55
BQ201	55
BQ203	53
BQ206	66
BQ206H	66
BQ206HS	66
BQ206S	66
BQ207	66
BQ207H	66
BQ208	66
BQ208H	66
BQ210	53
BQ211	53
BQ212	53
BQ213	53
BQ215	53
BQ216	53
BQ217	53
BQ218	53
BQ222	60
BQ223	61
BQ224	61
BQ225	61

PART NO.	PAGE NO.
BQ231	57
BQ232	57
BQ249	57
BQ250	57
BQ301	56
BQ303	56
BQ303BK	56
BQ303BL	56
BQ303GR	56
BQ303RD	56
BQ310	56
BQ311	56
BQ813	62
BQ1014	66
BQ1016	62, 65
BQ1019	56
BQ1020	66-67
BQ1021A	66
BQ1022	67
BQ1025	58
BQ1118	62, 65
BQ1218	62, 65
BQ1320	62, 65
BQ1421	62, 65
BQ1522	62, 65
BQ1624	62, 65
BQ2001W	66
BQ2004	55
BQ2005	66
BQ2006	56
BQ2006A	56
BQ2006B	56
BQ2007	76
BQ2008	66
BQ2009	66
BQ2010	66
BQ2012	76
BQ2014	76
BQ2026	76
BQ2027	76
BQ2029	76
BQ2033	67
BQ2051	76
BQ2100	67
BQ2101	55
BQ2101B	55
BQ2200	68
BQ2577	57, 61, 65
BQ2577SS	56
BQ2578	57, 61, 65

INDEX

PART NO.	PAGE NO.
BQ3052	60
BQ3052SS	56
BQ3858	62, 65
BQ4276	57, 61, 65
BQ4277	57, 61, 65
BQ4285	57, 61, 65
BQ4433	64-65
BQ4434	64-65
BQ4435	64-65
BQ4510	57, 61
BQ4511	57, 61, 65
BQ4511SS	56
BQ4512	57, 61, 65
BQ4513	57, 61, 65
BQ4513SS	56
BQ5555	57, 61, 65
BQ5555SS	56
BQ5842	57, 61, 65
BQ5842SS	56
BQ6118	57, 61, 65
BQ7000	62, 65
BQ7001	63, 65
BQ7002	63, 65
BQ7003	64-65
BQ7004	62, 65
BQ7005	61, 65
BQ7006	61, 65
BQ7007	64-65
BQ7008	63, 65
BQ7009	62, 65
BQ7010	64-65
BQ7011	64-65
BQ7013	65-66
BQ7812	60
BQ8078	64
BQ8083	64
BQ8084	64
BQ8085	64
BQ8086	64-65
BQ8087	64-65
BQ8088	64-65
BQ8089	64-65
BQ8090	64-65
BQ8092	64-65
BQ8093	64-65
BQ8093SS	56
BQ8094	64
BQ8095	64-65
BQ8095SS	56
BQ8096	64-65

PART NO.	PAGE NO.
BQ8097	64-65
BQ8098	64-65
BQ8099	64-65
BQ8099SS	56
BQ9174	57, 61, 65
BQ9175	57, 61, 65
BQ9176	57, 61, 65
BQ9177	57, 61, 65
BQ9178	57, 61, 65
BQ9179	57, 61, 65
BQ9180	57, 61, 65
BQ9181	57, 61
BQ9183	57, 61, 65
BQ9184	57, 61, 65
BQ9185	57, 61, 65
BQ9186	57, 61, 65
BQ9187	57, 61, 65
BQ9188	57, 61, 65
BQ9189	57, 61
BQ9190	57, 61
BQ9191	57, 61, 65
BQ9192	57, 61, 65
BQ9193	57, 61, 65
BQ9194	57, 61
BQ9195	57, 61
BQ9196	57, 61
BQ9197	57, 61
BQ9198	57, 61
BQ9199	57, 61
BQ21600	59
BQ25600	59
BQ27008	58
BQ27031	58
BQ27032	58
BQ27033	58
BQ27034	58
BQ27035	58
BQ27041	58
BQ27042	58
BQ27043	58
BQ27044	58
BQ27045	58
BQ27047	58
BQ27048	58
BQ27049	58
BQ27050	58
BQ27051	58
BQ27052	58
BQ27052	58
BQ27053	58

PART NO.	PAGE NO.
BQ27053	58
BQ27054	58
BQ27054	58
BQ27055	58
BQ27055	58
BQ27061	58
BQ27062	58
BQ27063	58
BQ27064	58
BQ27065	58
BQ27071	58
BQ27071	58
BQ27071	58
BQ27072	58
BQ27072	58
BQ27072	58
BQ27072	58
BQ27073	58
BQ27073	58
BQ42525	56
BQ78189	66
BQ78190	66
BQ78191	66
BQ78192	66
BQ78193	66
BQ78194	66
BQ78195	66
BQ78196	66
BQ78197	66
BQB01	48
BQB02	50
BQB04	48
BQB05	48
BQB06	60
BQB08	50
BQB09	50
BQB10	48
BQB11	48
BQB12	50
BQB14	48
BQB15	48
BQB16	50
BQB17	50
BQB18	50
BQB19	50
BQB20	48
BQB21	50
BQB22	51
BQB23	51
BQB24	48

PART NO.	PAGE NO.
BQB25	48
BQB26	48
BQB27	48
BQB29	48
BQB30	48
BQB34	51
BQB35	51
BQB36	51
BQB37	51
BQB38	51
BQB39	48
BQB40	49
BQB41	49
BQB42	49
BQB48	51
BQB49	51
BQB50	49
BQB63	49
BQB64	49
BQB65	49
BQB69	51
BQB70	51
BQB71	51
BQB74	51
BQB75	49
BQB77	51
BQB78	51
BQB86	49
BQB87	49
BQB89	49
BQB90	49
BQB91	49
BQB92	52
BQB93	52
BQB94	49
BQB111	49
BQB112	50
BQB115	50
BQB312	50
BQB313	50
HF01	8
HF01SS	56
HF02	8
HF03	8
HF04	4
HF05	8
HF06	4
HF06SS	56
HF07	4
HF07SS	56

INDEX

PART NO.	PAGE NO.
HF08	4
HF09	6
HF09SS	56
HF10	6
HF10SS	56
HF11	6
HF11SS	56
HF12	6
HF12SS	56
HF13	6
HF13SS	56
HF14	6
HF14SS	56
HF15	4
HF15SS	56
HF16	4
HF16B	4
HF16SS	56
HF17	4
HF17SS	56
HF18	4
HF26	8
HF27	8
HF28	4
HF29	4
HF30	7
HF300	7
HF301	7
HF30SS	56
HF31	7
HF31SS	56
HF32	7
HF33	4
HF33SS	56
HF34	4
HF35	7
HF37	7
HF38	7
HF39	4
HF71	7
HF72	7
HF73	7
HF74	7
HF77	5
HF81	5
HF82	5
HF83	7
HF84	5
HF85	5
HF89	5

PART NO.	PAGE NO.
HF92	5
HF93	5
HF94	5
HF97	5
HF98	5
HF99	5
HF100	6
HF101	6
HF102	6
HFB01	9
HFB02	9
HFB03	9
HFB05	9
HFB07	14
HFB08	14
HFB09	9
HFB09SS	56
HFB11	14
HFB12	14
HFB13	14
HFB14	14
HFB15	9
HFB16	14
HFB17	18
HFB18	18
HFB19	9
HFB22	19
HFB23	19
HFB24	11
HFB28	9
HFB29	11
HFB30	11
HFB21	18
HFB27	9
HFB31	11
HFB32	11
HFB33	11
HFB34	9
HFB34SS	56
HFB35	9
HFB36	9
HFB37	9
HFB37SS	56
HFB38	14
HFB39	18
HFB40	14
HFB41	14
HFB42	20
HFB43	20
HFB45	14

PART NO.	PAGE NO.
HFB46	14
HFB47	9
HFB48	14
HFB49	14
HFB50	9
HFB51	18
HFB52	20
HFB53	14
HFB54	15
HFB55	15
HFB56	15
HFB57	15
HFB58	18
HFB59	15
HFB60	15
HFB61	18
HFB62	15
HFB66	15
HFB67	15
HFB68	20
HFB69	20
HFB72	15
HFB73	10
HFB74	20
HFB75	11
HFB76	20
HFB77	20
HFB78	20
HFB79	20
HFB80	18
HFB81	15
HFB82	20
HFB83	20
HFB84	15
HFB85	15
HFB86	20
HFB87	20
HFB90	18
HFB91	15
HFB92	11
HFB93	11
HFB94	20
HFB95	21
HFB98	18
HFB100	15
HFB101	16
HFB102	21
HFB103	21
HFB105	11
HFB106	11

PART NO.	PAGE NO.
HFB107	21
HFB108	21
HFB111	10
HFB112	16
HFB113	21
HFB114	21
HFB115	21
HFB116	21
HFB117	21
HFB118	21
HFB119	21
HFB120	21
HFB121	21
HFB122	21
HFB123	22
HFB124	22
HFB125	22
HFB126	22
HFB127	22
HFB128	22
HFB129	22
HFB130	22
HFB131	22
HFB132	22
HFB133	16
HFB134	16
HFB135	22
HFB136	22
HFB142	22
HFB143	22
HFB144	16
HFB145	16
HFB146	16
HFB148	18
HFB149	16
HFB155	22
HFB156	23
HFB157	11
HFB158	11
HFB159	11
HFB160	18
HFB161	18
HFB164	11
HFB165	16
HFB166	16
HFB173	18
HFB174	23
HFB175	23
HFB176	23
HFB177	23

INDEX

PART NO.	PAGE NO.
HFB180	18
HFB182	19
HFB183	23
HFB184	23
HFB185	23
HFB186	23
HFB187	16
HFB188	19
HFB189	23
HFB190	23
HFB193	19
HFB194	10
HFB201	23
HFB202	23
HFB203	19
HFB209	23
HFB210	23
HFB211	19
HFB214	24
HFB215	24
HFB216	24
HFB217	24
HFB218	24
HFB221	24
HFB222	24
HFB230	16
HFB231	16
HFB237	24
HFB238	24
HFB239	24
HFB240	24
HFB241	24
HFB242	24
HFB243	16
HFB245	24
HFB246	24
HFB247	25
HFB248	25
HFB249	25
HFB250	25
HFB251	19
HFB276	19
HFB283	16
HFB284	25
HFB285	25
HFB286	17
HFB288	10
HFB289	10
HFB300	17
HFB306	25

PART NO.	PAGE NO.
HFB307	25
HFB309	19
HFB310	19
HFB315	25
HFB316	25
HFB317	25
HFB318	25
HFB321	25
HFB322	25
HFB323	25
HFB324	26
HFB328	26
HFB329	26
HFB332	26
HFB333	26
HFB340	12
HFB341	12
HFB342	12
HFB343	12
HFB344	10
HFB345	12
HFB346	12
HFB348	12
HFB349	12
HFB350	10
HFB351	10
HFB352	10
HFB353	12
HFB354	12
HFB356	12
HFB357	12
HFB358	12
HFB359	12
HFB360	12
HFB361	13
HFB362	13
HFB363	13
HFB364	13
HFB365	10
HFB366	13
HFB367	26
HFB368	26
HFB369	26
HFB370	26
HFB372	13
HFB373	13
HFB375	10
HFB376	26
HFB377	26
HFB379	19

PART NO.	PAGE NO.
HFB380	26
HFB381	26
HFB384	17
HFB389	13
HFB390	13
HFB403	17
HFB404	26
HFC01	27
HFC02	27
HFC04	28
HFC05	28
HFC06	27
HFC07	27
HFC09	27
HFC10	27
HFC11	27
HFC12	27
HFC13	27
HFC14	28
HFC15	27
HFC17	27
HFC18	28
HFC19	28
HFC301	27
HFC307	27
HFC315	27
HFC316	28
HFC317	28
HFC318	28
HFC319	28
HFC320	28
HFC321	28
HFC322	28
HFC323	29
HFC324	29
HFC325	29
HFC326	29
HFC327	27
HFC328	29
HFC329	29
HFC331	28
HFIF01	30
HFIF01B	30
HFIF01SS	56
HFIF02	30
HFIF02SS	56
HFIF03	34
HFIF05	30
HFIF06	34
HFIF07	30

PART NO.	PAGE NO.
HFIF08	30
HFIF09	30
HFIF10	30
HFIF11	30
HFIF14	30
HFIF15	36
HFIF18	30
HFIF19	30
HFIF20	30
HFIF21	30
HFIF22	36
HFIF23	33
HFIF24	30
HFIF25	33
HFIF26	31
HFIF27	33
HFIF28	33
HFIF29	31
HFIF30	31
HFIF31	33
HFIF32	31
HFIF33	31
HFIF34	33
HFIF35	31
HFIF36	31
HFIF37	33
HFIF38	31
HFIF39	33
HFIF40	31
HFIF41	36
HFIF42	36
HFIF44	36
HFIF45	31
HFIF46	33
HFIF47	33
HFIF48	33
HFIF51	31
HFIF52	36
HFIF53	33
HFIF54	33
HFIF55	33
HFIF56	33
HFIF57	34
HFIF58	34
HFIF59	34
HFIF60	36
HFIF63	31
HFIF64	31
HFIF65	31
HFIF66	34

INDEX

PART NO.	PAGE NO.
HFIF70	36
HFIF71	31
HFIF72	32
HFIF73	32
HFIF74	32
HFIF76	32
HFIF77	34
HFIF79	32
HFIF81	36
HFIF82	32
HFIF83	32
HFIF85	32
HFIF87	32
HFIF90	37
HFIF109	37
HFIF301	32
HFIF303	34
HFIF304	37
HFIF306	37
HFIFX01	35
HFIFX02	35
HFIFX03	35
HFIFX04	35
HFIFX05	35
HFIFX06	35
HFIFX07	35
HFIFX08	35
HFIFX09	35
HFIFX10	35
HFIFX11	35
HFIFX12	35
HFIFX14	35
HFIFX15	35
HFIFX16	35
HFIFX17	36
HFIFX18	36
HFIFX20	36
HFIFX21	36
HFIM01	38
HFIM01B	38
HFIM01SS	56
HFIM02	39
HFIM03	38
HFIM03SS	56
HFIM04	38
HFIM05	39
HFIM06	39
HFIM07	39
HFIM08	38
HFIM09	38

PART NO.	PAGE NO.
HFIM10	38
HFIM11	38
HFIM12	39
HFIM13	38
HFIM14	38
HFIM15	38
HFIM16	38
HFIM17	39
HFIM18	38
HFIM19	38
HFIM21	38
HFIM22	39
HFIM24	39
HFIM25	39
HFIM26	39
HFIM27	39
HFMF01	40
HFMF02	40
HFMF03	40
HFMF04	40
HFMF04SS	56
HFMF05	40
HFMF06	40
HFMF07	40
HFMF08	40
HFMF09	40
HFMF10	40
HFMF11	40
HFMF12	40
HFMF13	40
HFMF14	40
HFMF15	40
HFMF16	41
HFMF18	44
HFMF19	41
HFMF20	41
HFMF21	41
HFMF22	44
HFMF24	41
HFMF25	41
HFMF26	41
HFMF27	44
HFMF28	41
HFMF29	41
HFMF30	44
HFMF31	41
HFMF35	41
HFMF36	41
HFMF37	41
HFMF38	41

PART NO.	PAGE NO.
HFMF39	41
HFMF40	45
HFMF41	45
HFMF42	42
HFMF43	42
HFMF48	44
HFMF50	44
HFMF51	42
HFMF54	42
HFMF55	42
HFMF56	42
HFMF57	42
HFMF58	42
HFMF59	42
HFMF62	42
HFMF63	42
HFMF65	42
HFMF66	42
HFMF67	42
HFMF68	42
HFMF69	44
HFMF70	45
HFMF71	43
HFMF100	43
HFMF305	43
HFMF307	43
HFMF308	43
HFMF311	45
HFMF312	45
HFMF313	45
HFMF315	43
HFMF316	43
HFMF317	45
HFMF318	45
HFMF319	45
HFMF320	45
HFMF322	44
HFMF324	45
HFMF325	45
HFMF327	43
HFMF329	43
HFMF333	43
HFMF340	43
HFMF342	45
HFMF343	45
HFMFX01	44
HFMFX02	44
HFMFX04	44
HFMM01	46
HFMM02	47

Identify Fittings in 60 Seconds or Less

One of the biggest time wasters is time spent identifying the fittings. BrakeQuip has designed a system around the fitting catalog so that you can identify a fitting in seconds once you have identified the thread if applicable. The first thing you need to do is understand the fitting numbering system.

For crimp style fittings, BrakeQuip has 9 different product groups and all start with HF (Hose Fitting) Usually if it is not a crimp fitting, the part number will start with BQ. (BrakeQuip)

Follow these steps for systemizing this quick find process:

1. Decide which fitting group the fitting falls under.
2. Select the fitting style or the way it is mounted. Use the Fitting Catalog contents section at the front of the catalog until you get familiar with catalog.
3. This narrows your search down to a couple of pages or less. Identify what is unique about the fitting and focus on this point in the Catalog.
4. Confirm your selection by checking that all the important attributes match the fitting you are seeking.

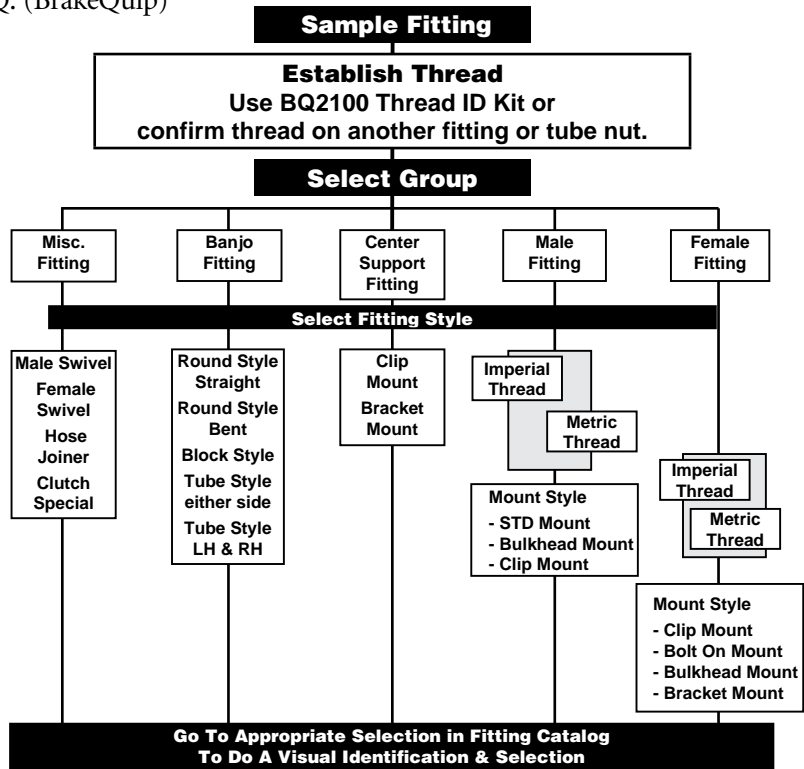
Note: Not all fittings look the same as the original but will still function properly. The three important points that you need to consider are:

- A. Can the fitting be secured properly
- Is there a mount or shoulder profile that will clash?
- B. Will the working end at the connection match up and seal?
- C. Does the hose need something to direct it away from rubbing or heat.

Understanding The Code

Abbreviation	Description
HF	Miscellaneous
IM	Imperial Male
MM	Metric Male
IF	Imperial Female
MF	Metric Female
B	Banjo
C	Center Support
IFX	Imperial Female external thread mount
MFX	Metric Female external thread mount

NOTE: Imperial = American Standard



Note: To search electronically - go to www.brakequip.com - products - brake hose fittings.

Hose Fitting Numbering System

HF = Hose Fitting (These two letters are used for computer number finding only.)
 Fittings that don't fall into one of the categories below have the prefix HF only.

PREFIX	DESCRIPTION	EXAMPLE
HF01 – HF__	Hose Fittings of a Miscellaneous Nature	
HFIM01 – HFIM__	Male Fittings (Imperial Thread)	
HFMM01 – HFMM__	Male Fittings (Metric Thread)	
HFIF01 – HFIF__	Female Fittings (Imperial Thread)	
HFMF01 – HFMF__	Female Fittings (Metric Thread)	
HFB01 – HFB__	Banjo Fittings	
HFC01 – HFC__	Center Support Fittings	
HFIFX01 – HFIFX__	Female Imperial Thread (External Thread)	
HFMFX01 – HFMFX__	Female Metric Thread (External Thread)	
BQ	Any items that are not a crimpable hose fitting	

Identifying the Correct Thread

Worldwide there are only two measuring systems – Metric and Imperial. Some times the imperial measurement is called SAE or American.

Metric systems measure the thread by the distance between two thread pitches expressed in millimeters. Example: M10 x 1 = The OD of the thread is 10mm and the distance between each thread pitch is 1mm. Imperial systems measure the number of thread pitches over a one inch length.

Example: 7/16 x 24NS = The OD of the thread is 7/16 and the number of thread pitches over a one inch length is 24.

After some experience of looking at threads a lot and knowing what vehicle the fitting came from, you will be able to determine fitting threads by just looking at them.

Determining if the thread is metric or imperial.

The easiest way is using a thread gauge. BrakeQuip offers a thread

identification kit (BQ2100) for this purpose and covers the majority of threads that you will encounter working with brake plumbing. Another method could be to use a brake hose fitting or tube nut from your stock that you can confirm the thread and size from.

If this fails do the following:

1. Determining the fitting OD

(a) If a male fitting – Measure the OD of the thread. Take into account that this measurement will be slightly under the nominal size. The one size that may trick you up here is 7/16". This will probably measure 11mm. This size is extremely rare so it will probably be the most common 7/16" size which is 7/16" x 24NS.

(b) If a female fitting – Measure the ID of the thread. Compare this measurement at the distance between the "valleys" of opposing pitches with corresponding male fittings.

2. Determining the thread pitch

If it is an imperial size – Count the number of thread pitches over say 1/2" length and then multiply by 2 to get your T.P.I (Threads per Inch)

If is an metric size – Measure the distance between two thread pitches to determine the thread pitch.

Imperial Threads found on braking systems

3/8 x 24NF 7/16 x 24NS 9/16 x 20NS
3/8 x 20BSF 1/2 x 20NF
7/16 x 20NF 9/16 x 18NF

Metric Threads found on braking systems

M9 x 1	M10 x 1.5	M12 x 1.25
M10 x 1	M11 x 1.25	M12 x 1.5
M10 x 1.25	M12 x 1	M14 x 1.5

Abbreviations

NF = National Fine

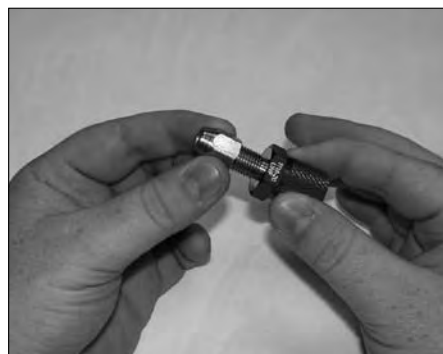
NS = National Special

BSF = British Standard Fine

Checking the Thread Type



Male & female threads can be checked using the BrakeQuip Thread Gauge #BQ2100



PROMOTIONAL MATERIAL

Brochures



BQ2007



BQ2014



BQ2027



BQ2028



BQ2029



BQ2050



BQ2051



BQ2080

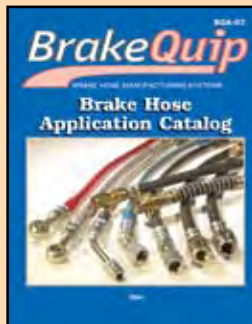


BQ2081



BQ2082

Catalogs



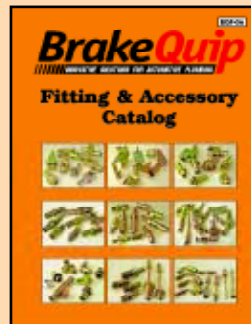
BQA-02



BQAP-1007



BQB-04



BQF-06



BQX-01

Posters



BQ2012



BQ2026

BrakeQuip
INNOVATIVE SOLUTIONS FOR AUTOMOTIVE PLUMBING



1470 Amherst Road • Knoxville Tennessee 37909

Phone: 865-251-9193 Fax: 865-251-9192

Email: info@brakequip.com • Web: www.brakequip.com

Printed in USA