



MASTER CATALOG



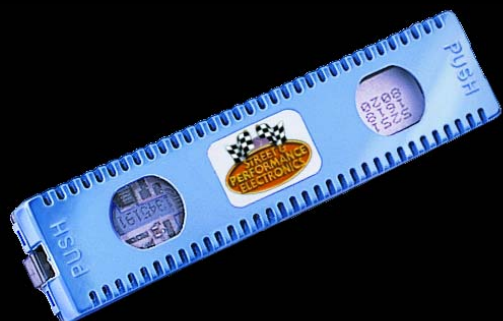
Helix Power Tower Plus
Throttle Body Spacer



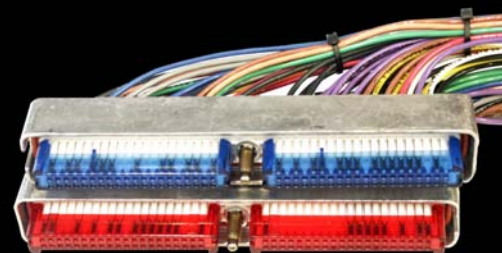
PROFLASH
Hand-Held Programmer



AIRMAX
Spiral Flow Intake



INTIMIDATOR STAGE IV
Performance Computer Chip



PERFECT CIRCUIT
EFI Wiring Harness



John Boveia
President and CEO

Welcome to Street and Performance Electronics

Since 1986, **Street and Performance Electronics** has been the leader of innovative products for the automotive aftermarket.

Beginning with our first-on-the-market electronic fuel injection **PERFECT CIRCUIT™** EFI wiring harness, we also offer a full line of **Helix Power Tower Plus™** throttle body spacers, **AIRMAX™** performance air induction systems, **PROFLASH™** handheld automotive computer programmers, and our **Intimidator Stage IV™** performance computer chips.

Each of our products is the finest of its type available in the market place. Street and Performance Electronics has invested enormous resources in developing our product line. From research and development to cutting edge manufacturing, we employ state-of-the-art materials and production methods in the making of our products. Not only that, but every product that leaves our facility is subjected to rigorous quality control procedures to assure you that they are the best of their kind in the marketplace.

It is with great pride that we present our new Master Catalog. The pages are packed with a broad range of applications in each product category and every attempt has been made to make it user friendly.

We hope you find your special application listed, however, if you don't see your application listed please call us. Because Street and Performance Electronics is in a constant state of product development, we may have something in the works to fill your specific needs.

Based in North Little Rock Arkansas, the entire Street and Performance Electronics family takes exceptional pride in serving you. Our customer relations and technical staff stands ready to serve you and are only a phone call away.



The Street and Performance Electronics Family
We look forward to serving you

Table of Contents



Helix Power Tower Plus™

4 - 5

Throttle Body Spacers



AIRMAX™

6 - 7

Spiral Flow Intake Systems



PROFLASH™

8 - 9

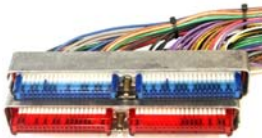
Handheld programmers



Intimidator Stage IV™

10 - 13

Performance Computer Chips



PERFECT CIRCUIT™

14 - 16

EFI Wiring Harness



Helix Power Tower Plus™

Throttle Body Spacers Design Breakthrough!



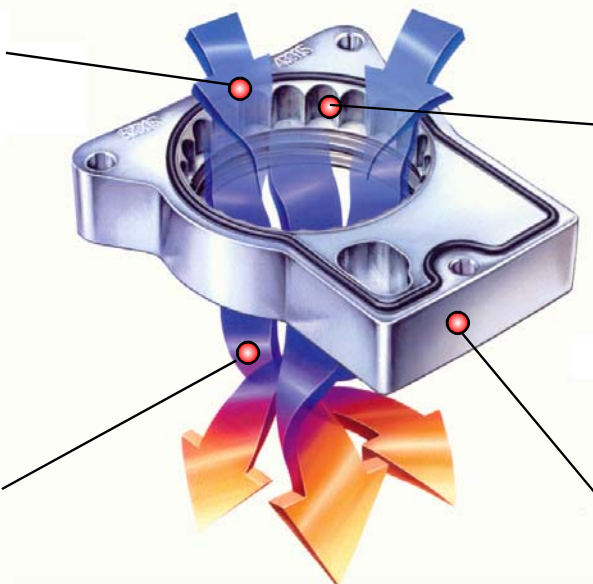
INCREASED AIR-FLOW

creates better engine cylinder filling, can be used with any grade of fuel for more power and economy



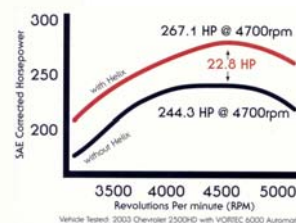
VARIABLE VENTURI APERTURE

provides turbulence to mix the air/fuel charge for a more complete burn efficiency



COMPUTER DESIGNED

chambers and channels specially designed to improve efficiency and air velocity performance



HELIX POWER TOWER PLUS

is precision machined from solid T-6061 billet aluminum for long lasting performance

Street and Performance Electronics, the first company to develop the throttle body spacer that delivers improved power, performance, and economy has achieved a design breakthrough!

Engineers at Street and Performance Electronics have developed a new generation design that provides better improved performance and economy! Every new product design is achieved through superior engineering and cutting edge development equipment, such as, our SuperFlow air bench and our DynoJet dynamometer.

Utilizing multiple aerodynamic principles, the **Helix Power Tower Plus** (patent pending) produces air breakup and turbulence that yields greater fuel burn efficiency, which translates into the best performing and efficient product of its type in the marketplace!

The **Helix Power Tower Plus** is crafted from heat-treated T-6061 aircraft quality solid-billet aluminum. Each plate is held to the most rigorous manufacturing standards in the industry. They are machined on the most advanced CNC equipment available, assuring you of the most accurate product possible. Each plate is subjected to ultra high inspection standards, for further assurance of the finest product in the marketplace.

The **Helix Power Tower Plus** comes with all the installation hardware you need. Installation is simple and may be done in as little as 45 minutes. In no time you will experience the thrill of better performance from your engine.

Helix Power Tower Plus

delivers:

- ◆ Up to 22 hp gains*
- ◆ Up to 4 miles per gallon gains*
- ◆ Up to 25 ft lb gain in Torque*
- ◆ Easy installation
- ◆ Quiet Operation
- ◆ Performance benefits across entire power band*
- ◆ Environmentally friendly with cleaner fuel burn
- ◆ Fifty States Legal (C.A.R.B. # D516-2)

*Performance level may vary among applications and driving style



Throttle Body Spacers

General Motors Automobile

| Year | Engine | Body Style | Part # |
|-----------|------------------|-----------------|--------|
| 1998-2002 | 3.8L V-6 | Camaro/Firebird | 38020* |
| 1985-1992 | 5.0/5.7L V-8 TPI | Camaro/Firebird | 57020 |
| 1999-2002 | 3.8L V-6 | Impala | 38025* |
| 1998-2002 | 5.7L | Camaro/Firebird | 57025* |
| 1985-1991 | 5.7L V-8 TPI | Corvette | 57020 |
| 1998-2003 | 5.7L | Corvette | 57025* |

General Motors Trucks

| | | | |
|-----------|------------------|-----------------|-------|
| 1999-2001 | 2.2L I-4 | S-10/15 | 22005 |
| 1987-1993 | 4.3L V-6 TBI | S-10/15 | 43005 |
| 1994-1995 | 4.3L V-6 TBI | S-10/15 | 57005 |
| 1996-2004 | 4.3L V-6 VOR | S-10/15 | 43015 |
| 1987-1995 | 5.0/5.7L V-8 TBI | C/K 1500/3500 | 57005 |
| 1989-1990 | 7.4L V-8 TBI | C/K 1500/3500 | 74005 |
| 1991-1995 | 7.4L V-8 TBI | C/K 1500/3500 | 74006 |
| 1996-2000 | 5.0/5.7L V-8 VOR | C/K 1500/3500 | 57015 |
| 1999-2004 | 4.8/5.3/6.0L V-8 | C/K 1500/3500 | 53015 |
| 1996-2000 | 7.4L V-8 VOR | C/K 2500/3500 | 74015 |
| 2001-2004 | 8.1L V-8 VOR | C/K 2500/3500 | 74015 |
| 1999-2000 | 5.0/5.7L V-8 VOR | Escalade/Denali | 57015 |
| 2001-2004 | 4.8/5.3/6.0L V-8 | Escalade/Denali | 53015 |
| 2003-2004 | 8.1L V-8 VOR | Escalade | 74015 |
| 2001-2004 | 6.6L DIESEL | C/K 2500/3500 | 66005 |
| 2003-2004 | 6.0L VOR | H2 Hummer/SSR | 60005 |

Ford Automobiles

| | | | |
|-----------|---------------|----------------|--------|
| 1985-1986 | 5.0L V-8 HO | Mustang | 50005 |
| 1987-1993 | 5.0L V-8 HO | Mustang | 50015 |
| 1994-1995 | 5.0L V-8 HO | Mustang | 50025 |
| 1996-1998 | 3.8L V-6 | Mustang | 38005* |
| 1996-1998 | 4.6L SOHC V-8 | Mustang | 46035 |
| 1999-2003 | 3.8L V-6 | Mustang | 38015* |
| 1999-2004 | 4.6L SOHC V-8 | Mustang | 46045 |
| 1993-1995 | 4.6L SOHC V-8 | Crown Victoria | 46015 |
| 1996-2002 | 4.6L SOHC V-8 | Crown Victoria | 46025 |

Ford Trucks

| | | | |
|-----------|--------------|-----------------|--------|
| 1990-1999 | 4.0L OHV | Ranger/Explorer | 40015 |
| 1996-1999 | 3.0L V-6 | Ranger/Explorer | 30005 |
| 1998-1999 | 4.0L SOHC | Ranger/Explorer | 40025 |
| 2000-2003 | 4.0L SOHC | Ranger/Explorer | 40035* |
| 1987-1997 | 4.9L I-6 | F-150/350 | 49005 |
| 1987-1997 | 5.0/5.8L V-8 | F-150/350 | 68005 |
| 1997-2000 | 4.2L V-6 | F-150 | 42005 |
| 2001-2002 | 4.2L V-6 | F-150 | 42015 |
| 1997-2003 | 4.6L V-8 | F-150 | 46005 |
| 1997-2003 | 5.4L V-8 | F-150/350 | 54005 |
| 1992-1997 | 7.5L V-8 | F-250/350 | 68005 |
| 1999-2003 | 6.8L V-10 | F-250/350 | 68015 |
| 1999-2003 | 7.3L DIESEL | F-250/350 | 73015 |

Dodge/Jeep Trucks

| Year | Engine | Body Style | Part # |
|-----------|--------------|----------------|--------|
| 1992-2002 | 3.9/5.2/5.9L | Dakota/Durango | 59005 |
| 2000-2001 | 4.7L V-8 | Dakota/Durango | 47005 |
| 1994-2002 | 3.9/5.2/5.9L | Ram 1500 | 59015 |
| 2002 | 4.7L V-8 | Ram 1500 | 47015 |
| 2003 | 4.7L V-8 | Ram 1500 | 47025 |
| 2003 | 5.7L HEMI | Ram 1500/3500 | 57045* |
| 1994-2002 | 8.0L V-10 | Ram 2500/3500 | 80005 |
| 1991-2004 | 2.5/4.0L | Jeep | 40005 |
| 2001-2002 | 4.7L V-8 | Jeep (XJ, YJ) | 47035* |
| 2002-2004 | 3.7L V-6 | Jeep Liberty | 37055* |

Sport Compact

| | | | |
|-----------|----------------|---------------------|-------|
| 2002-2003 | 2.0L DOHC | Ford Focus | 20015 |
| 1996-1999 | 2.0L SOHC | Dodge Neon | 20035 |
| 1998-2001 | 2.2L SOHC | Cavalier/Sunbird | 22015 |
| 1996-2001 | 2.4L DOHC | Cavalier/Sunbird | 22025 |
| 2000-2002 | 2.4L DOHC | PT Cruiser | 24035 |
| 1996-2001 | 2.4L | Toyota Tacoma | 24055 |
| 1995-2002 | 3.4L V-6 | Toyota Tacoma | 34055 |
| 1999-2002 | 4.7L V-8 | Toyota Tundra | 47055 |
| 1999-2002 | 4.7L V-8 | Toyota Landcruiser | 47055 |
| 1993-2000 | D15B7/D15B8 | Honda Civic | 91001 |
| 1993-2000 | D15Z1/D16Z6 | Honda Civic/Del Sol | 91001 |
| 1994-1997 | F22B1/F22B2 | Honda Accord | 91001 |
| 1993-1996 | F22A1 | Honda Prelude | 91001 |
| 1998-2001 | F23A4 | Honda Accord | 91002 |
| 1994-2001 | H22A4 | Honda Prelude | 91002 |
| 1998-2001 | J30A1 | Honda Accord | 91003 |
| 2001 | D17A1/D17A2 | Honda Civic | 91004 |
| 1990-2001 | B18A1/B18C1 | Acura Integra | 91010 |
| 1995-1999 | 2.0L NON TURBO | Eclipse/Talon | 93001 |
| 1995-1999 | 2.4L NON TURBO | Mitsubishi Eclipse | 93002 |
| 1990-1999 | 3.0L NON TURBO | Mitsubishi 3000GT | 93005 |

Holley Carburetors

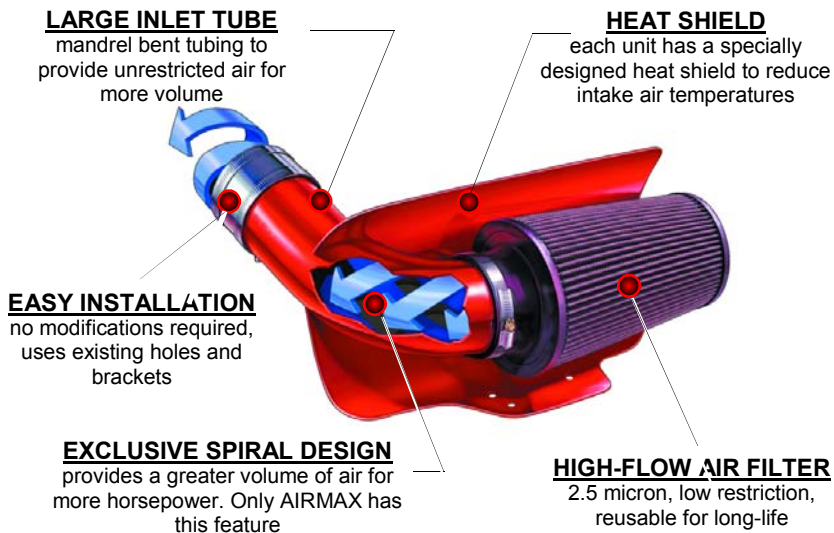
| | |
|--------------------------------------|--------|
| QuadraJet 4bbl carb | 00450 |
| Holley 500 cfm 2bbl carb | 00500 |
| Holley 500 cfm 4bbl intake 2bbl carb | 00500B |
| Holley 600 cfm 4bbl carb | 00600 |
| Holley 750 cfm 4bbl carb | 00750 |
| Holley 1050 cfm 4bbl Dominator carb | 01000 |

*** Call for Availability**



AIRMAX™

Spiral Flow Air Intake System



When it comes to engine airflow, there are two things that rob engine power; low air volume and elevated air temperature.

Stock air intake systems provide lower than desired air volume and higher than desired air temperatures, as the air passes through the throttle body.

With **AIRMAX** spiral flow intake system installed those concerns are left behind.

AIRMAX has a specialized rifled barrel spiral sleeve that's inserted into the air inlet tubing. When the spiral insert is combined with **AIRMAX** oversized inlet tubing, the normal column of air is converted into a vortex-like spinning force. This force results in increased air volume and cooler air temperature over stock induction systems.

This increased air volume and vortex-like air action creates a turbulent air that when combined with fuel is more efficiently burned in the combustion chamber. And the improved fuel burn results in newfound power, better torque and improved fuel economy from your stock engine.

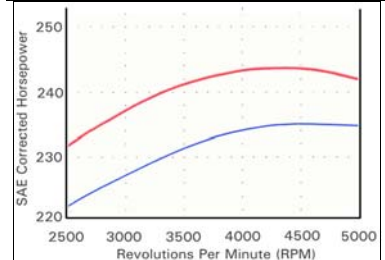
The **AIRMAX** mandrel formed tubing and hand rolled heat shield is made from quality 16 gauge steel. The powder coat finish provides a quality look as well as insulation to keep the air inside cool. The plastic spiral insert provides an even greater thermal barrier to help keep air moving through the system cool.

Each **AIRMAX** comes with an industry leading K&N® filter for the cleanest air and most unrestricted airflow any filter can offer.

No other fresh air induction system can match the quality and engineering of the **AIRMAX** Spiral Flow Intake system. And best of all, it's engineered to compliment our **Helix Power Tower Plus** throttle body spacer.



HORSEPOWER



Blue Line: Stock Factory Air Intake
Red Line: AirMax Spiral Flow Intake
Dyno Sheet 1996 C1500 5.7L



General Motors Automobiles

| Year | Engine | Body | Part # |
|-----------|----------|-----------------|--------|
| 1993-1997 | 5.7L | Camaro/Firebird | 15750* |
| 1998-2002 | 5.7L | Camaro/Firebird | 15755* |
| 1994-1996 | 4.3/5.7L | Impala/Caprice | 15790* |

General Motors Trucks

| | | | |
|-----------|--------------|---------------------|--------|
| 1996-2004 | 4.3L VORTEC | S-10 | 14300 |
| 1999-2003 | 2.2L I-4 | S10 | 12200* |
| 1988-1995 | 4.3/5.0/5.7L | C/K | 15700 |
| 1992-1995 | 7.4L TBI | C/K | 17400 |
| 1996-2000 | 4.3/5.0/5.7L | Escalade/C/K/Denali | 15720 |
| 1996-2001 | 7.4L VORTEC | C/K | 17420 |
| 2000-2004 | 4.3L VORTEC | C/K | 14350* |
| 1999-2004 | 4.8/5.3/6.0L | Escalade/C/K/Denali | 15300 |
| 2001-2004 | 6.6L Diesel | C/K | 16600 |
| 2001-2004 | 8.1L VOR | Escalade/C/K | 18100 |
| 2001-2003 | 4.2L I-6 | Trailblazer/Envoy | 14200 |
| 2003-2004 | 6.0L | H2 Hummer | 16000 |

Ford Automobiles

| | | | |
|-----------|-----------|----------------|-------|
| 1997-2003 | 4.6L SOHC | Crown Victoria | 24600 |
|-----------|-----------|----------------|-------|

Ford Trucks

| | | | |
|-----------|-------------|-----------------|-------|
| 1998-2000 | 5.0L | Explorer | 25000 |
| 1997-2003 | 4.6/5.4L | F-150 | 25400 |
| 1999-2000 | 5.4L SC | F-150 Lightning | 25700 |
| 2001-2002 | 5.4L SC | F-150 Lightning | 25705 |
| 1994-1997 | 7.3L Diesel | F-250/350 | 27200 |
| 1999-2003 | 5.4/6.8L | F-250/350 | 26800 |
| 1999-2003 | 7.3L Diesel | F-250/350 | 27300 |

Dodge Trucks

| Year | Engine | Body | Part # |
|-----------|--------------|----------------|--------|
| 2000-2002 | 2.4L | PT Cruiser | 32400 |
| 2003 | 2.4L | PT Cruiser | 32405 |
| 2003 | 2.4L Turbo | PT Cruiser | 32450 |
| 1997-2001 | 3.9/5.2/5.9L | Dakota/Durango | 35920 |
| 2000-2001 | 4.7L V-8 | Dakota/Durango | 34700 |
| 1994-2001 | 3.9/5.2/5.9L | Ram | 35900 |
| 2002-2003 | 4.7/5.9L V-8 | Ram | 35925 |
| 2003 | 5.7L HEMI | Ram | 35700 |
| 1998-2002 | 5.9L Diesel | Ram | 35950 |
| 2003-2004 | 5.9L Diesel | Ram | 35955 |

Jeep

| | | | |
|-----------|----------|-----------------|--------|
| 2002-2004 | 3.7L V-6 | Liberty | 33700* |
| 1996-2001 | 4.0L | Cherokee | 34000 |
| 1991-1998 | 4.0L | Cherokee Laredo | 34025 |
| 1999-2001 | 4.7L | Grand Cherokee | 34750* |
| 1993-1998 | 5.2/5.9L | Grand Cherokee | 35200* |
| 1997-2001 | 2.5/4.0L | Wrangler (TJ) | 34040 |

* Call for Availability



34700 2000-2001 Dakota/Durango 4.7L



25400 1997-2003 Ford 5.4L



32400 2000-2002 PT Cruiser 2.4L



27300 1999-2003 Ford 7.3L Diesel



35900 1994-2001 RAM 3.9/5.2/5.9L



16600 2001-2003 GM DuraMax 6.6L



15300 1999-2003 GM 4.8/5.3/6.0L

PROFLASH™

UP TO 30 HORSEPOWER

gain over stock without use of any other tools or devices

PROVEN PERFORMANCE

each unit has been specially tuned for economy, power, and performance

EASY INSTALLATION

easy to use instructions, installs in minutes



LIMITERS & CORRECTION

calibrations to match your tire size speed rating and gear ratio

UP TO 35 POUNDS OF TORQUE

gain over stock for the serious Off-Road or the easiest of drivers

GM & FORD APPLICATIONS

gasoline and diesel models available cars and trucks

Street and Performance Electronics **PROFLASH** hand held programmer is the most versatile computer tuning tool on the market today.

Developed to permit tuning for your specific needs, the **PROFLASH** offers a variety of tuning and best of all, its easy to use.

When **PROFLASH** is plugged into your vehicles OBDII port under the dash, it communicates to your vehicle's computer. With a simple series of yes or no questions allows you to tune your engine for more performance, speed limiter, better shifting control, pre-detonation control, gear ratio, and tire height changes.

The kit comes with simple instructions and everything you need to get your engine tuned. And in as little as 20 minutes, the **PROFLASH** programmer will unlock the unexploited power in your engine. No other hand held programmer on the market offers the reliability and versatility of the **PROFLASH** programmer.

PROFLASH delivers:

- ◆ 36 levels of engine tuning on most models
- ◆ Performance without changing the thermostat
- ◆ Correct speed limiter to match the speed rating of tires
- ◆ Gear ratio calibration from 3.08 to a 5.13 ratios on most models
- ◆ Speedometer calibration for tire height from 25" to 44" on most models
- ◆ Low, middle, and high octane detonation tuning for gasoline tuning
- ◆ 4 tuning modes: Stock, Economy, Tow/RV, and Hi-Perf on most programmers
- ◆ Transmission calibration for all automatic transmissions including the Allison 5-speed
- ◆ Fifty States Legal (C.A.R.B. EO D516-3)



Engine tuning with the **PROFLASH** programmer is easy as 1, 2, 3



1. Plug **PROFLASH** into your OBDII port



2. Follow the step-by-step **PROFLASH** instructions



3. Now take your vehicle for a joyful ride

General Motors Automobiles

| Year | Engine | Body | Part # |
|-----------|--------|-----------------|---------|
| 1999-2002 | 5.7L | Camaro/Firebird | 200105* |
| 1999-2003 | 5.7L | Corvette | 200205* |

General Motors Trucks

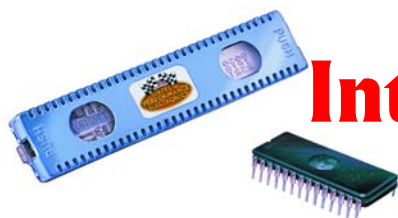
| | | | |
|------|------------------|-----------------------|--------|
| 1996 | 4.3/5.0/5.7/7.4L | C/K/S | 960005 |
| 1997 | 4.3/5.0/5.7/7.4L | C/K/S | 970005 |
| 1998 | 4.3/5.0/5.7/7.4L | C/K/S | 980005 |
| 1999 | 4.3/5.0/5.7/7.4L | Escalade/C/K/S/Denali | 990005 |
| 1999 | 4.8/5.3/6.0L | C/K | 200025 |
| 2000 | 4.3/5.0/5.7/7.4L | Escalade/C/K/S/Denali | 200005 |
| 2000 | 4.8/5.3/6.0L | C/K/S | 200025 |
| 2001 | 4.8/5.3/6.0/8.1L | C/K/Denali | 200025 |
| 2001 | 5.3/6.0L | Escalade | 200345 |
| 2001 | 6.6L Diesel | C/K | 200055 |
| 2002 | 4.8/5.3/6.0/8.1L | C/K/Denali | 200025 |
| 2002 | 5.3/6.0L | Escalade/EXT | 200345 |
| 2002 | 6.6L Diesel | C/K | 200055 |
| 2003 | 4.8/5.3/6.0/8.1L | C/K/SS/Denali | 200325 |
| 2003 | 5.3/6.0L/8.1L | Escalade/EVS/EXT | 200345 |
| 2003 | 6.6L Diesel | C/K | 200055 |
| 2003 | 6.0L | H2 HUMMER | 200335 |
| 2004 | 4.8/5.3/6.0/8.1L | C/K/SS/SSR/Denali | 200325 |
| 2004 | 5.3/6.0L/8.1L | Escalade/EVS/EXT | 200345 |
| 2004 | 6.6L Diesel | C/K | 200055 |
| 2004 | 6.0L | H2 HUMMER | 200335 |

Ford Trucks

| | | | |
|-----------|-------------|-----------|---------|
| 1997-2003 | 4.6/5.4L | F-150/250 | 204500* |
| 1994-2003 | 7.3L Diesel | F-250/550 | 205500* |
| 1994-2003 | 7.3L Diesel | E-250/350 | 205550* |

* Call for Availability





Intimidator Stage IV™

Performance Computer Chips



Throughout the history of the American automobile, power enthusiasts discovered countless ways to pick up more horsepower and torque from a factory engine. That was until the arrival of computer driven fuel injection motors. Almost overnight enthusiasts found themselves severely limited in power tuning options. The solution for this problem came in the way of the aftermarket computer chip that was designed as a simple and affordable way to unlock power and torque from this new generation power plant.

Street and Performance Electronics came to market with the Intimidator Stage IV computer chip and immediately provided power seekers with a superior engine tuning method. Intimidator Stage IV applications target air-fuel ratio, ignition timing curve, and transmission shifting to unlock power from your stock engine. Fully dyno and road tested, the Street and Performance Electronics chip is unsurpassed in quality and reliability.

Each application offers a potential 10% horsepower and torque increase without a sacrifice in fuel mileage. And best of all is that in as little as 15 minutes, you can realize improved performance from your stock engine. There are no other methods for horsepower and torque gains as simple and affordable as the addition of a Street and Performance Electronics Intimidator Stage IV performance chip.

Every chip manufactured by Street and Performance Electronics comes with a complete step-by-step installation guide and our technicians are just a phone call away when any assistance is needed.

Each Street and Performance Electronics chip application is specific for torque management characteristics, injector rate control and ignition timing control. Additionally chip installation provides uninterrupted fuel mileage.

Other programming features include elevation of the speed limiter to accommodated higher speed rated tires. And when applicable the torque converter clutch control is elevated to prevent torque converter lockup at low speeds.

Our General Motors chips are manufactured on original Delco-Remy chip blanks and provide a seamless installation for the General Motors applications. Each chip is programmed for application specific requirements

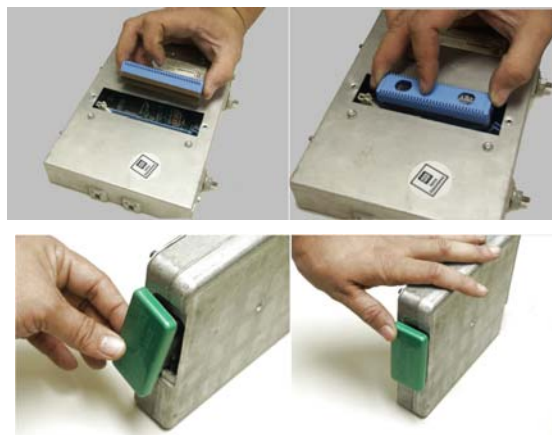
Ford applications are produced on the high quality blank modules that are engineered for installation in the computer's rear data port.

Street and Performance Electronics provides a broad base of General Motors applications and a select Ford offering. However, should your requirements call for something not listed, give us a call. Because of our advanced programming services, most specialized requirements may be accommodated. Custom orders are subject to specialized pricing.

Every Street and Performance Electronics performance chip carries a warranty that provides for chips that are free of material or workmanship defects. Our computer chips should not void your vehicle's factory warranty as they meet or exceed C.A.R.B. requirements.

Intimidator Stage IV computer chips deliver:

- ◆ Up to 10% gain in rear wheel horsepower and torque
- ◆ Performance gains without thermostat changes
- ◆ Crisper the throttle response
- ◆ Delay lock-up torque converter engagement for interrupted power output at low speeds
- ◆ Correct the shift points on electronic transmissions so the transmission does not shift in the middle of the torque curve
- ◆ Improve shift firmness on electronic transmissions to promote transmission life and performance
- ◆ Increase the speed limiter to match speed rating of tires
- ◆ Easy to install with step-by-step instructions



General Motors Automobiles

| Year | Model | Engine | Transmission | Special Note | Part # |
|------|------------------|------------|--------------|--------------|--------|
| 1992 | Camaro/Firebird | 5.0L TBI | AUTO/OD | | 920120 |
| | Camaro/Firebird | 5.0L TBI | STD. | | 920121 |
| | Camaro/Firebird | 5.0L TPI | AUTO/OD | | 920150 |
| | Camaro/Firebird | 5.0L TPI | STD. | | 920151 |
| | Camaro/Firebird | 5.7L TPI | AUTO/OD | | 920160 |
| | Camaro/Firebird | 5.7L TPI | STD. | | 920161 |
| | Corvette | 5.7L (LT1) | AUTO/OD | | 920260 |
| | Corvette | 5.7L (LT1) | STD. | | 920261 |
| | Caprice | 5.0L TBI | AUTO/OD | | 920920 |
| | Caprice & Police | 5.7L TBI | AUTO/OD | | 920930 |
| 1993 | Camaro/Firebird | 5.7L (LT1) | AUTO/OD | | 930160 |
| | Camaro/Firebird | 5.7L (LT1) | STD. | | 930161 |
| | Corvette | 5.7L (LT1) | AUTO/OD | | 930260 |
| | Corvette | 5.7L (LT1) | STD. | | 930261 |
| | Caprice | 5.0L TBI | AUTO/OD | | 930920 |
| | Caprice & Police | 5.7L TBI | AUTO/OD | | 930930 |

General Motors Trucks

| | | | | | |
|------|---------|----------|---------|----------------------|--------|
| 1992 | C/K1500 | 4.3L TBI | AUTO/OD | | 920310 |
| | C/K1500 | 4.3L TBI | STD | | 920311 |
| | C/K1500 | 5.0L TBI | AUTO/OD | | 920320 |
| | C/K1500 | 5.0L TBI | STD | | 920321 |
| | C/K1500 | 5.7L TBI | AUTO/OD | | 920330 |
| | C/K1500 | 5.7L TBI | STD | | 920331 |
| | SS P/U | 7.4L TBI | ELEC/OD | MT1 (3) | 920342 |
| | C/K2500 | 5.7L TBI | AUTO/OD | M30 (3) | 920430 |
| | C/K2500 | 5.7L TBI | STD | | 920431 |
| | C/K2500 | 5.7L TBI | ELEC/OD | MT1 (3) | 920432 |
| | C/K2500 | 7.4L TBI | STD | | 920441 |
| | C/K2500 | 7.4L TBI | ELEC/OD | MT1 (3) | 920442 |
| | C/K3500 | 5.7L TBI | STD | | 920531 |
| | C/K3500 | 5.7L TBI | ELEC/OD | MT1 (3) | 920532 |
| | C/K3500 | 7.4L TBI | STD | | 920541 |
| | C/K3500 | 7.4L TBI | ELEC/OD | MT1 (3) | 920542 |
| | S10/S15 | 4.3L TBI | AUTO/OD | 8th VIN# Digit=Z (1) | 921010 |
| | S10/S15 | 4.3L TBI | STD | 8th VIN# Digit=Z (1) | 921011 |
| 1993 | C/K1500 | 4.3L TBI | STD | | 930311 |
| | C/K1500 | 4.3L TBI | ELEC/OD | | 930313 |
| | C/K1500 | 5.0L TBI | STD | | 930321 |
| | C/K1500 | 5.0L TBI | ELEC/OD | | 930323 |
| | C/K1500 | 5.7L TBI | STD | | 930331 |
| | C/K1500 | 5.7L TBI | ELEC/OD | | 930333 |
| | SS P/U | 7.4L TBI | ELEC/OD | MT1 (3) | 930342 |
| | C/K2500 | 5.7L TBI | STD | | 930431 |
| | C/K2500 | 5.7L TBI | ELEC/OD | MT1 (3) | 930432 |
| | C/K2500 | 5.7L TBI | ELEC/OD | M30 (3) | 930433 |
| | C/K2500 | 7.4L TBI | STD | | 930441 |
| | C/K2500 | 7.4L TBI | ELEC/OD | MT1 (3) | 920442 |
| | C/K3500 | 5.7L TBI | STD | | 930531 |

On year model vehicles older than 1992 most chips are available upon request.
Call for availability of application not listed in this application guide.

| General Motors Trucks (Continued) | | | | | |
|-----------------------------------|---------|----------|--------------|-------------------------|--------|
| Year | Model | Engine | Transmission | Special Note | Part # |
| 1993 | C/K3500 | 5.7L TBI | ELEC/OD | MT1 (3) | 930532 |
| | C/K3500 | 7.4L TBI | STD | | 930541 |
| | C/K3500 | 7.4L TBI | ELEC/OD | MT1 (3) | 930542 |
| | S10/S15 | 4.3L TBI | STD | 8th Vin# Digit=Z (1) | 931011 |
| | S10/S15 | 4.3L TBI | ELEC/OD | 8th Vin# Digit=Z (1) | 931013 |
| 1994 | C/K1500 | 4.3L TBI | STD | | 940311 |
| | C/K1500 | 4.3L TBI | ELEC/OD | | 940313 |
| | C/K1500 | 5.0L TBI | STD | | 940321 |
| | C/K1500 | 5.0L TBI | ELEC/OD | | 940323 |
| | C/K1500 | 5.7L TBI | STD | | 940331 |
| | C/K1500 | 5.7L TBI | ELEC/OD | | 940333 |
| | C/K2500 | 5.7L TBI | STD | | 940431 |
| | C/K2500 | 5.7L TBI | ELEC/OD | MT1 (3) | 940432 |
| | C/K2500 | 5.7L TBI | ELEC/OD | M30 (3) | 940433 |
| | C/K2500 | 7.4L TBI | STD | | 940441 |
| | C/K2500 | 7.4L TBI | ELEC/OD | MT1 (3) | 940442 |
| | C/K3500 | 5.7L TBI | STD | | 940531 |
| | C/K3500 | 5.7L TBI | ELEC/OD | MT1 (3) | 940532 |
| | C/K3500 | 7.4L TBI | STD | | 940541 |
| | C/K3500 | 7.4L TBI | ELEC/OD | MT1 (3) | 940542 |
| | S10/S15 | 4.3L TBI | STD | 8th Vin# Digit=Z (1)(2) | 941011 |
| | S10/S15 | 4.3L TBI | ELEC/OD | 8th Vin# Digit=Z (1)(2) | 941013 |
| 1995 | C/K1500 | 4.3L TBI | STD | | 950311 |
| | C/K1500 | 4.3L TBI | ELEC/OD | | 950313 |
| | C/K1500 | 5.0L TBI | STD | | 950321 |
| | C/K1500 | 5.0L TBI | ELEC/OD | | 950323 |
| | C/K1500 | 5.7L TBI | STD | | 950331 |
| | C/K1500 | 5.7L TBI | ELEC/OD | | 950333 |
| | C/K2500 | 5.7L TBI | STD | | 950431 |
| | C/K2500 | 5.7L TBI | ELEC/OD | MT1 (3) | 950432 |
| | C/K2500 | 5.7L TBI | ELEC/OD | M30 (3) | 950433 |
| | C/K2500 | 7.4L TBI | STD | | 950441 |
| | C/K2500 | 7.4L TBI | ELEC/OD | MT1 (3) | 950442 |
| | C/K3500 | 5.7L TBI | STD | | 950531 |
| | C/K3500 | 5.7L TBI | ELEC/OD | MT1 (3) | 950532 |
| | C/K3500 | 7.4L TBI | STD | | 950541 |
| | C/K3500 | 7.4L TBI | ELEC/OD | MT1 (3) | 950542 |
| | S10/S15 | 4.3L TBI | ELEC/OD | 8th Vin# Digit=Z (1)(2) | 951013 |
| | S10/S15 | 4.3L TBI | STD | 8th Vin# Digit=Z (1)(2) | 951011 |

Footnote (1): 1992-1995 S10/S15 Trucks and the Astro/Safari Vans have two 4.3 motor options. The 8th digit of the Vehicle Identification Number (VIN) will have W for the 4.3 CPI or Z for the 4.3 TBI.

Footnote (2): The 1995 model S10/S15's had two computer options for the 4.3 motors. One computer is under the hood located over the coolant reservoir. GM part # 16193495. The chips for these models are not available. The other computer is located under the dashboard. GM part #16197427. The chip for these models is available.

Footnote (3): The M30 is a 4L60E Transmission, and the MT1 is a 4L80E Transmission. Both are 4 speed automatics with overdrive. The option numbers M30 or MT1 are usually located in the glove compartment on the RPO code sheet.

Ford Automobiles

| Year | Model | Engine | Transmission | Part # |
|-----------|----------------|-----------|--------------|-----------------|
| 1997-2003 | Crown Victoria | 4.6L SOHC | Auto | 862301+ECM CODE |
| 1986-1995 | Mustang | 5.0L | STD/Auto | 862301+ECM CODE |
| 1996-2003 | Mustang | 4.6L SOHC | STD/Auto | 862301+ECM CODE |
| 1999-2003 | Mustang | 4.6L DOHC | STD | 862301+ECM CODE |

Ford Trucks (Gas)

| | | | | |
|-----------|------------------|-----------|----------|-----------------|
| 1997-2003 | F-150 | 4.2L V-6 | STD/Auto | 972301+ECM CODE |
| 1997-2003 | Expedition/F-150 | 4.6L SOHC | STD/Auto | 972301+ECM CODE |
| 1997-2003 | F-150/350 | 5.4L SOHC | STD/Auto | 972301+ECM CODE |
| 1999-2003 | F-250/350 | 6.8L V-10 | STD/Auto | 972301+ECM CODE |

Ford Trucks (Diesel)

| | | | | |
|-----------|-----------|-------------|----------|-----------------|
| 1994-2003 | F-250/350 | 7.3L Diesel | STD/Auto | 942301+ECM CODE |
| 1994-2003 | E-250/350 | 7.3L Diesel | STD/Auto | 942301+ECM CODE |

IMPORTANT! These modules carry different codes for each type of car/truck and there are often several different types of codes used for the same car/truck. In order to supply the correct code for your vehicle, we need to know the proper code from the computer. This can be found on the connector, on a label which the wiring harness connects to the computer or the computer has a port on the rear. The port is covered by a vinyl cover. On this cover is a postage size sticker. Located on this sticker is a **BOLD** type code; this is the ECM CODE.



1994-2003 PowerStroke Owners

The PowerStroke diesel has become a popular truck. The large 7.3L turbo diesel engine has considerable potential for more pulling power. The weight of this truck makes it sluggish at the bottom-end leaving a lot to be desired on hills and when towing. By adding the Street & Performance Electronics Intimidator Stage IV computer chip you will feel a dramatic increase in horsepower and torque.

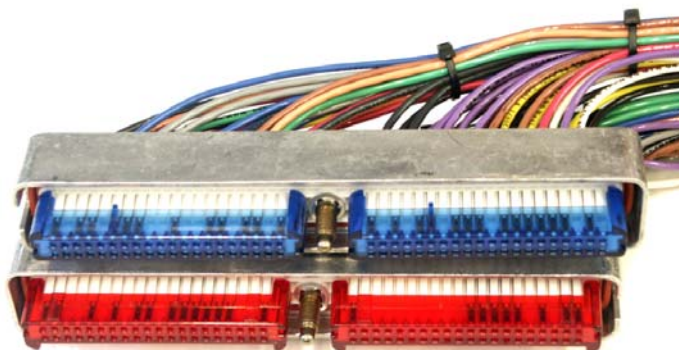
For the 1994-1997 PowerStrokes, the truck responded amazingly. In the mid-range, we achieved an extra 40 horsepower and 70 lb/ft. torque increase gain over stock without compromising fuel economy.

For the intercooled 1999 and later PowerStrokes, we gained even more horsepower and torque. With the Street & Performance Electronics Intimidator Stage IV computer module, the PowerStroke gained an additional 65 horsepower and 120 lb/ft. torque over stock figures, again without fuel mileage loss. If anything, the mileage can improve through normal driving because of the low-end torque gain.

The Street & Performance Electronics Intimidator Stage IV computer module will give you the extra power that your truck needs without the threat of exhaust gas temperatures reaching engine meltdown temperatures. You will notice the horsepower and torque increases whether you are towing, off-roading or off the line... **Guaranteed!** Your truck will feel like you've never imagined.

PERFECT CIRCUIT™

EFI Engine Wiring Harness



In 1986, street-rod enthusiast John Boveia developed a non-factory wiring harness for General Motors Tuned Port Injection (TPI) fuel injection engines. As a first of its kind innovation, it caught the eye of Pat Ganhal who published an expose' of the harness in the November 1986 issue of Hot Rod magazine.

The wiring harness gained popularity and was recognized by SEMA (Specialty Equipment Market Association) by presentation of its coveted Best New Car Product award. And later it was honored by NSRA (National Street Rod Association) with its popular Pro's Pick prize.

As the first and oldest wiring harness producer, Street and Performance Electronics continues its winning tradition with the manufacture of the industry's most state-of-the-art wiring harness. With applications from General Motors TBI fuel injection, to the high-tech late-model LS1 engine, leading street rod fabricators,

conversion shops, and the do-it-yourself enthusiasts turn to the Street and Performance Electronics harness for quality and reliability.

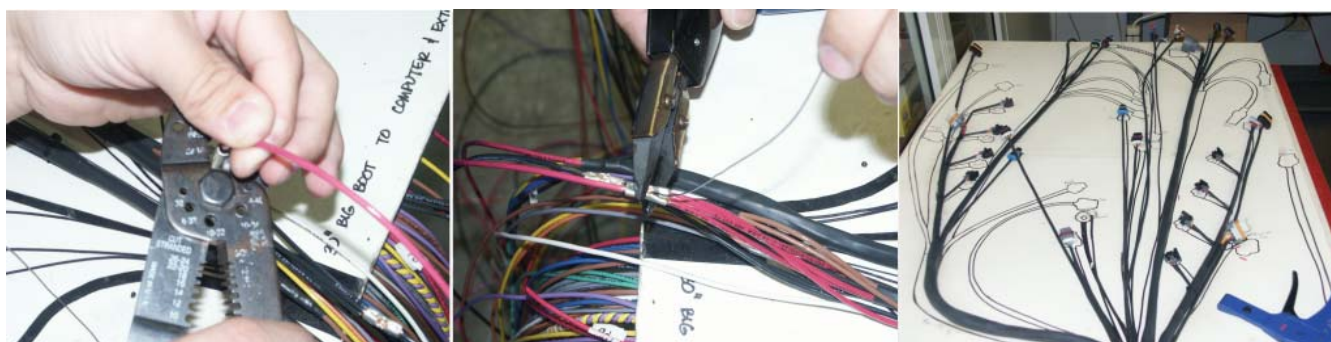
Quality of the Street and Performance Electronics wiring harness is second to none. Every application is made to exacting specifications and is produced from high temperature, oil resistant wiring that meets or exceeds General Motors original equipment manufacture ring specifications. Every application is 100% hand made.

Every sub-assembly is sheathed in heavy gauge heat shrink tubing. The total assembly main trunk is encased in a heat shrink boot providing the best heat insulation, puncture resistant, oil resistant wiring harness on the market.

Wire terminals are mated with factory original equipment waterproof "weather-pack and metri-pack" connectors. All wire junctions are butt connected, crimped and soldered for additional security and quality.

Each wiring harness is subjected to rigorous quality control procedures that include specific electronic integrity and electric continuity inspections. In addition every unit must pass meticulous materials quality and craftsmanship inspection.

The Street and Performance Electronics wiring harness comes with complete installation instructions, and our expert technical staff is available to provide any necessary help. And every harness is covered by a five year warranty that provides for a harness that is free from material and workmanship defects.



EFI Engine Wiring Harnesses

| 1986-1995 4.3/5.0/5.7L Throttle Body Injection | | | | |
|---|--|-------------------|---------------------|-------------------|
| Engine Year | Computer Number | Trans Type | Harness Part Number | Emissions Adapter |
| 1986-1992 TBI 4.3/5.0/5.7L Pick-up Truck | 01227747 01228747 16146299 16144288 | Standard 700R4 | 1471000 | Included |
| The stock chip will work for this application. To use emissions a Vehicle Speed Sensor (9900900) should be used. | | | | |
| 1987-1993 TBI 5.0/5.7L Camaro/Firebird/Caprice | 01228063 01228746 16135320 16136965 | Standard 700R4 | 1471100 | Included |
| The stock chip will work for this application. To use emissions a Vehicle Speed Sensor (9900900) should be used. | | | | |
| 1993-1995 TBI 4.3/5.0/5.7L Pick-up Truck | 01227747 | Standard | 1471210 | Included |
| | 01228747 | 4L80e | 1471220 | Included |
| | 16144288 | 4L60e | 1471230 | Included |
| | 16171199 16196395 | | | |
| The stock chip will work for this application. | | | | |
| 1988-1990 TBI 7.4L Pick-up Truck | 01227747 01228747 | Standard TH400 | 1741040 | Included |
| The stock chip will work for this application. To use emissions a Vehicle Speed Sensor (9900900) should be used. | | | | |
| 1985-1992 5.0/5.7L Tuned Port Injection | | | | |
| 1986-1992 TPI | 01227727 | STD 700R4 | 2271000 | 2279906 |
| The stock chip will work for this application. To use the emissions adapter a Vehicle Speed Sensor (9900950) should be used. | | | | |
| 1986-1992 TPI | 01227730 | STD 700R4 | 2731000 | 2739906 |
| The stock chip will work for this application. To use the emissions adapter a Vehicle Speed Sensor (9900950) should be used. | | | | |
| 1992-1997 5.7L LT1 Multi-Port Fuel Injection | | | | |
| 1992 LT1 | 16159278 | Standard 700R4 | 3571400 | 3579906 |
| The stock chip will work for this application. To use the emissions adapter a Vehicle Speed Sensor (9900950) should be used. | | | | |
| 1993 LT1 | 16159278 | Standard 700R4 | 3571500 | 3579906 |
| The stock chip will work for this application. To use the emissions adapter a Vehicle Speed Sensor (9900950) should be used. | | | | |
| 1994-1995 LT1 (OBD1) | 16181333 | Standard | 3571600 | 3579906 |
| | 16188051 | 4L60e | 3571630 | |
| The stock programming (Camaro/Firebird/Caprice) will work for this application. All Corvette computer applications require (3571619) reprogramming at an additional charge. | | | | |
| 1996-1997 LT1 (OBDII) | 16124399 | Standard | 3571700 | 3579906 |
| | 16242921 | 4L60e | 3571730 | |
| The stock programming (Camaro/Firebird/Caprice) will work for this application. All Corvette computer applications require (3571739) reprogramming at an additional charge. | | | | |
| *NOTE: ECM Programming will have to be done at the factory level. The computer will have to be sent to Street & Performance Electronics and the service can be performed to correct speedometer, shift points and Vehicle Anti-Theft System (VATS) removal at an additional charge. | | | | |

EFI Engine Wiring Harness

| 1996-2000 4.3/5.0/5.7/7.4L VORTEC Fuel Injection | | | | | |
|--|----------------------|--------------|------------|---------------------|-------------------|
| Engine Year | Computer Number | | Trans Type | Harness Part Number | Emissions Adapter |
| 1996-1997 4.3L | 16244210 | 1996 | Standard | 4431810 | N/A |
| | 16208546 | 1996 | 4L80e | N/A | N/A |
| | 16229684 | 1997 | 4L60e | 4431830 | 4579906 |
| 1998-2000 4.3L | 16250279 | 1998 | Standard | 4431910 | N/A |
| | 09355699 | 1998 | 4L80e | N/A | N/A |
| | 16263494 | 1999 | 4L60e | 4431930 | 4579906 |
| Requires ECM programming 4431909 to remove VATS for 1998-00 for an additional charge.* | | | | | |
| 1996-1997 5.0/5.7L | 16244210 | 1996 | Standard | 4571810 | N/A |
| | 16208546 | 1996 | 4L80e | 4571820 | 4579906 |
| | 16229684 | 1997 | 4L60e | 4571830 | 4579906 |
| 1998-2000 5.0/5.7L | 16250279 | 1998 | Standard | 4571910 | N/A |
| | 09355699 | 1998 | 4L80e | 4571920 | 4579906 |
| | 16263494 | 1999 | 4L60e | 4571930 | 4579906 |
| Requires ECM programming 4571909 to remove VATS for 1998-00 for an additional charge.* | | | | | |
| 1996-1997 7.4L | 16244210 | 1996 | Standard | 4741810 | N/A |
| | 16208546 | 1996 | 4L80e | 4741820 | 4579906 |
| | 16229684 | 1997 | 4L60e | N/A | N/A |
| 1998-2000 7.4L | 16250279 | 1998 | Standard | 4741910 | N/A |
| | 09355699 | 1998 | 4L80e | 4741920 | 4579906 |
| | 16263494 | 1999 | 4L60e | N/A | N/A |
| Requires ECM programming 4741909 to remove VATS for 1998-00 for an additional charge.* | | | | | |
| 1999-2002 4.8/5.3/6.0L LS1/VORTEC (Truck) MPFI | | | | | |
| 1999-2002 LS1 | 09354896 | 1999 2001 | Standard | 5532010 | 5539906 |
| | 4L80e | | 5532020 | | |
| | 4L60e | | 5532030 | | |
| Requires ECM programming (5553209) to remove VATS for an additional charge.* Note: Engines that use a “Fly-By-Wire” throttle body will need to be convert to a mechanical throttle cable and throttle body, call for assistance. | | | | | |
| 1997-2003 5.7L LS1/LS6 (Car) MPFI | | | | | |
| 1997-1998 LS1 | 16238212 | 1998 | Standard | 6572110 | N/A |
| | | | 4L60e | 6572130 | 6579906 |
| Requires ECM programming (6572109) to remove VATS for an additional charge.* 1997 applications have to use 16238212 computer and programming (6572109) to remove VATS for an additional charge.* | | | | | |
| 1999-2000 LS1 | 09354896 12200411 | | Standard | 6572210 | N/A |
| | | | 4L60e | 6572230 | 6579906 |
| Requires ECM programming (6572209) to remove VATS for an additional charge.* All Corvette computer applications will require programming (6572209) to remove VATS for an additional charge.* Note: Engines that use a “Fly-By-Wire” throttle body will need to be convert to a mechanical throttle cable and throttle body, call for assistance. | | | | | |

*NOTE: ECM Programming will have to be done at the factory level. The computer will have to be sent to Street & Performance Electronics and the service can be performed to correct speedometer, shift points and Vehicle Anti-Theft System (VATS) removal for an additional charge.



MEMBER

Your Consumer Rights Dealing with Aftermarket Equipment

Specialty Equipment Market Association (SEMA) is an automotive aftermarket association that represents the industry in many matters. It's especially an important body in legislative matters and as such functions as a major lobby to state and federal legislative bodies in America.

Street and Performance Electronics is a proud member of SEMA and subscribes to the SEMA Consumers' Bill of Rights. We choose to publish that bill of rights here because as an aftermarket consumer it is important that you know your rights within the legal system of the United States of America.

SEMA Consumer's Bill of Rights

Your Rights to Personalize you Vehicle

Article 1: You have the Right to buy high-quality reliable aftermarket performance and specialty parts, accessories, and styling options.

Article 2: You have the Right to use high-quality aftermarket parts and know that your new vehicle warranty claims will be honored. In fact, your vehicle dealer may not reject a warranty claim simply because an aftermarket product is present. A warranty denial under such circumstances may be proper only if an aftermarket part caused the failure being claimed.

Article 3: You have the Right to install and use emissions-legal aftermarket performance parts without incurring hassles and onerous procedures during state vehicle emissions inspections.

Article 4: You have the Right to actively oppose any proposed (or existing) laws or regulations that will reduce your freedom to use aftermarket automotive parts and service or will curtail your ability to take part in the automotive hobbies of your choice.

Article 5: You have the Right to patronize independent retail stores and shops for vehicle parts and service. The U.S. aftermarket offers the world's finest selection of performance and specialty parts, accessories, and styling options. These aftermarket products satisfy the most discriminating customers seeking personalized vehicles for today's lifestyle.

The Consumer's Bill of Rights of Specialty Equipment Marketing Association.

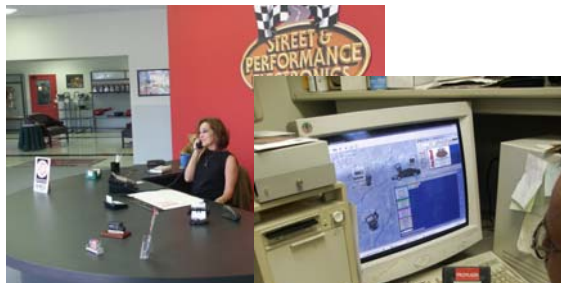
Street and Performance Warranty

At Street and Performance Electronics, Inc. we want you to have the highest quality products possible. If for any reason you are not completely satisfied within the first thirty days of purchase, you may return the product for the full purchase price or we will repair or replace any defective product to the original purchaser. We guarantee complete satisfaction.

Street and Performance Electronics stand behind our products 100%, however we cannot be responsible for vehicle down time or any other expenses that may be incurred in the process. Further, Street and Performance Electronics cannot be responsible for any damage due to improper installation.

Street and Performance Electronics

From order entry to order fulfillment the Street and Performance Electronics family is here to serve you. We work hard everyday to provide you with the best customer services and the finest engineered products available in the industry.



Customer Service...

The Street and Performance Electronics customer service team is made up of skilled professionals that will make your call a positive and user-friendly experience.

A professional and friendly receptionist will answer your call instead of an annoying and never ending electronic phone system. Your call will be routed to order entry, accounting, or technical services.



Research and Development...

From conception to completion, every Street and Performance Electronics product is the result of the best engineering, research & development in the industry today. Utilizing the latest in CAD/CAM designing programs our expert engineers provide the finest in product design.

Cutting edge data acquisition equipment such as our DynoJet Dynamometer and Flow Bench are just some of the equipment used in product design and development.



Order Fulfillment...

When orders are shipped they are checked and rechecked for accuracy and to make sure the fill rate is complete.



Manufacturing...

In each category, Street and Performance employs the highest standards and specifications in the manufacturing process. In addition, each product undergoes rigorous inspections and quality control checks to ensure that you receive the finest product of its kind.

Helix Power Tower Plus...



Helix Power Tower Plus throttle body plates are manufactured using the highest grade materials and are produced on state-of-the-art CNC machines.

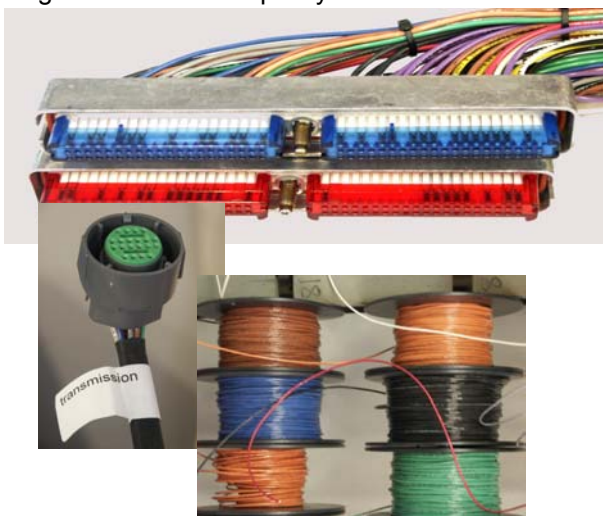
ProFlash...

ProFlash hand held computers and our Intimidator Stage IV performance chips are engineered, programmed and manufactured using state-of-the-art electronics and the highest quality computer components.



Perfect Circuit...

Perfect Circuit wiring harnesses are the finest, most reliable and highest quality electronic fuel injected wiring harnesses available. They under go stringent material and quality controls.



AirMax...



AirMax fresh spiral flow intake systems are produced using the best materials and manufacturing practices. Each unit is hand-crafted to assure a perfect fit in each application.

Street & Performance Electronics, Inc.
304 Smokey Lane
North Little Rock, Arkansas 72117
(501) 945-0354 FAX: (501) 945-0370
www.StreetandPerformanceElectronics.com