

"IT'S NICE TO ACTUALLY GET SOMETHING THAT
EXCEEDS MY EXPECTATIONS"

—John M., SC



Shown here: 67"
Race Ramp XTs
with XTenders

INSIDE

VEHICLE SERVICE RAMPS

67" Race Ramp XTs	4
56" Race Ramps	5
Wheel Chock	5
40" Sport Ramps	6
XTenders	7
Roll-Ups	7

WHEEL CRIBS®	8, 9
--------------------	------

FLATSTOPPERS®	10
---------------------	----

TRAK-JAX®	11
-----------------	----

TRAILER PRODUCTS

Trailer Ramps	12
Custom Trailer Ramps	14
Trailer-Mates	15
Trailer Side Kicks	16
Trailer Step	16

PORTABLE PIT STOP RAMP®	17
-------------------------------	----

GARAGE GEAR

Rack Ramps	18
Scale Ramps	19
Wheel Stands	20
Slip Plate Stands	20

SHOW PRODUCTS

Show Ramps	21
Show Cribs	21

CUSTOM PRODUCTS...	22
--------------------	----



Wooden boards, heavy rusted metal ramps, gouged floors, and an expensive chiropractor bill—these are all things car enthusiasts are familiar with... but shouldn't have to be.

ENTER RACE RAMPS: Extremely lightweight and durable ramps and accessories that just plain work. Whether you are looking to change the oil on your classic car, display that impressive show car, or load your expensive baby into the trailer, Race Ramps has the solution for you. Because of their unique construction, these products will not slide across a garage floor, dig into an asphalt drive, scratch or otherwise damage a cement or painted floor.

Race Ramps products are made specifically for Corvettes, Porsches, Vipers, Mustangs, BMWs, Ferraris, and other high performance cars with wide tires and low ground clearance. These cars can be difficult to service, maintain, and load onto trailers... but Race Ramps products solve all of these problems — and more!





Get all the great features of standard Race Ramps but in a convenient

TWO-PIECE DESIGN

After you have your car secured on the Race Ramps, you can remove the back “ramp section” and have access from the side of the car as well as the front and rear. Each ramp can still be stored as one piece (or two if you wish).



“I bought a pair of Race Ramps and **THEY ARE AWESOME**. It’s so nice to have a lightweight, slip-free ramp that is low enough to pull up on without hitting and gets you high enough in the air that you can get under your car without jacking it up... I threw my old metal ramps away.”

—MAX R., VA



Vehicle Service Ramps are built in one solid piece, making them durable and sturdy. Like all Race Ramps products, they will not slide across a garage floor, dig into an asphalt driveway, scratch or otherwise damage a cement or painted floor. They can be used on grass, dirt, or almost any other flat surface, and they will never rust. Race Ramps come complete with straps for easy carrying and storage.



"I wanted to let you know that **YOUR RAMPS ARE THE BEST!!!** THEY ARE **LIGHTWEIGHT, EASY TO STORE, AND VERY SAFE.** I just recently purchased the roll ups that get the rear end up enough to jack and place on cribs.

AWESOME PRODUCTS." —HANK B, NC

67" RACE RAMP XT_s

67" long x 10" high x 14" wide (with 10.75° incline)
Two-piece 67" Race Ramp XT_s

Quantity: 2

Product: **RR-XT**
Product: **RR-XT-2**

Race Ramp XT_s are ideal for low ground clearance vehicles with tires up to 12" wide. With an incline of only 10.75°, they raise the car up 10" and hold up to 3,000 pounds per set while weighing only 15 pounds each.

TO BE SAFE, USE WHEEL CHOCKS WITH ALL RAMP PRODUCTS.



"I could not be happier. My Race Ramps just saved me \$85 at the garage, which means a **QUICK RETURN ON MY INVESTMENT!** Thanks for being proudly made in America, too!"

—JOE G., OH

56" RACE RAMPS

56" long x 8" high x 12" wide (with 10.75° incline)
Two-piece 56" Race Ramps

Quantity: 2

Product: **RR-56**
Product: **RR-56-2**

56" Race Ramps are ideal for low ground clearance vehicles with tires up to 10" wide. With an incline of only 10.75°, they lift the car up 8" and hold up to 3,000 pounds per set while weighing only 10 pounds per ramp.

WHEEL CHOCK

6" long x 4" high x 5" wide

Quantity: 1

Product: **RR-WC-1**

Wheel Chocks are ideal for use with all Race Ramps products, providing additional safety in the working environment. Made from solid rubber composite with an extra-grip bottom, they each weigh 3 pounds.



6 VEHICLE SERVICE RAMPS



40" SPORT RAMPS

40" long x 7" high x 10" wide (with 16° incline)

Quantity: 2

Product: **RR-40**

Sport Ramps were requested by owners of small sports cars that don't have 12" wide tires or low front ends, but who still want all of the other great Race Ramps features. They are ideal for most small sports cars, accommodating tires up to 8" wide and raising the car up 7". They hold up to 3,000 pounds per set while weighing only 8 pounds per ramp.

DETERMINE WHICH RAMPS WILL WORK FOR YOU

56" AND 67" RACE RAMPS:

Place one end of a yardstick at the front inside edge of the tire contact patch of either front tire. Elevate the opposite end of the yardstick until it touches the bottom of the front spoiler. Measure the vertical distance from the ground at the elevated end of the yardstick. If that distance is greater than 7.25", your car will clear these ramps without a problem.



IF YOU ARE UNABLE TO CLEAR OUR 56" OR 67" RACE RAMPS, TRY OUR XTENDERS:

Do the same yardstick test as before, measuring the vertical distance from the ground at the elevated end of the yardstick. If that distance is greater than 5", your car will clear the XTenders without a problem. See the next page for more details.





XTENDER
for 67" and 56" Ramps

XTENDERS

Quantity: 2

56" Mate: 45" long x 12" wide (with 6.8° incline)

Product: **RR-EX-12**

67" Mate: 45" long x 14" wide (with 6.8° incline)

Product: **RR-EX-14**

XTenders nest on to your one or two-piece 56" or 67" Race Ramps, giving you an approach angle of only 6.8° for use with vehicles really low to the ground. They mate easily with the 56" or 67" Race Ramps and can be removed once the vehicle is up the ramp to provide additional working area.

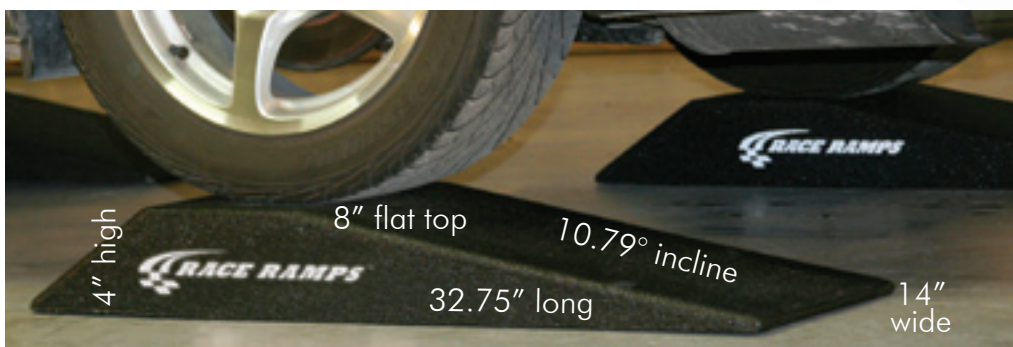
** These ramps are not to be used by themselves. They are designed only to be used with 56" and 67" Race Ramps. **

12" or 14"
wide



45" long

Shown inverted.



ROLL-UPS

Quantity: 2

32.75" long x 4" high x 14" wide (with 10.79° incline)

Product: **RR-RU**

Roll-Ups are designed to be used in conjunction with 56" or 67" Race Ramps or 40" Sport Ramps. They raise the opposite end of the vehicle up 4", enabling completion of more difficult tasks, such as changing the exhaust. Roll-Ups also raise the front or rear of the car to allow the use of a standard floor jack. At 14" wide, they can be used with tires up to 12" wide. They weigh only 4.5 pounds each and are small enough to fit in the trunk of a C5 or C6.

8 WHEEL CRIBS®



Use a set of Wheel Cribbs in conjunction with our Vehicle Service Ramps and you have a lightweight and totally portable lift that is easy to store!

WHEEL CRIBS®

Quantity: 2

15" long x 8" high x 12" wide
15" long x 10" high x 12" wide
15.75" long x 12" high x 12" wide

Product: RR-WC-8
Product: RR-WC-10
Product: RR-WC-12

Wheel Cribbs are a safe, lightweight alternative to jack stands. They cradle the tire 8", 10", or 12" off the ground (depending on the model), providing unobstructed access underneath the car. Each crib supports 1,500 pounds (3,000 pounds per set) and weighs only 5 pounds. Using the appropriate Wheel Cribbs in conjunction with 56" or 67" Race Ramps allows your car to be level while raised—useful for changing your oil, for example. Wheel Cribbs also can be used for car display and are available in custom sizes.

** You must use Wheel Chocks behind both tires on the Race Ramps before jacking up your car to place the opposite two tires on the Wheel Cribbs. **



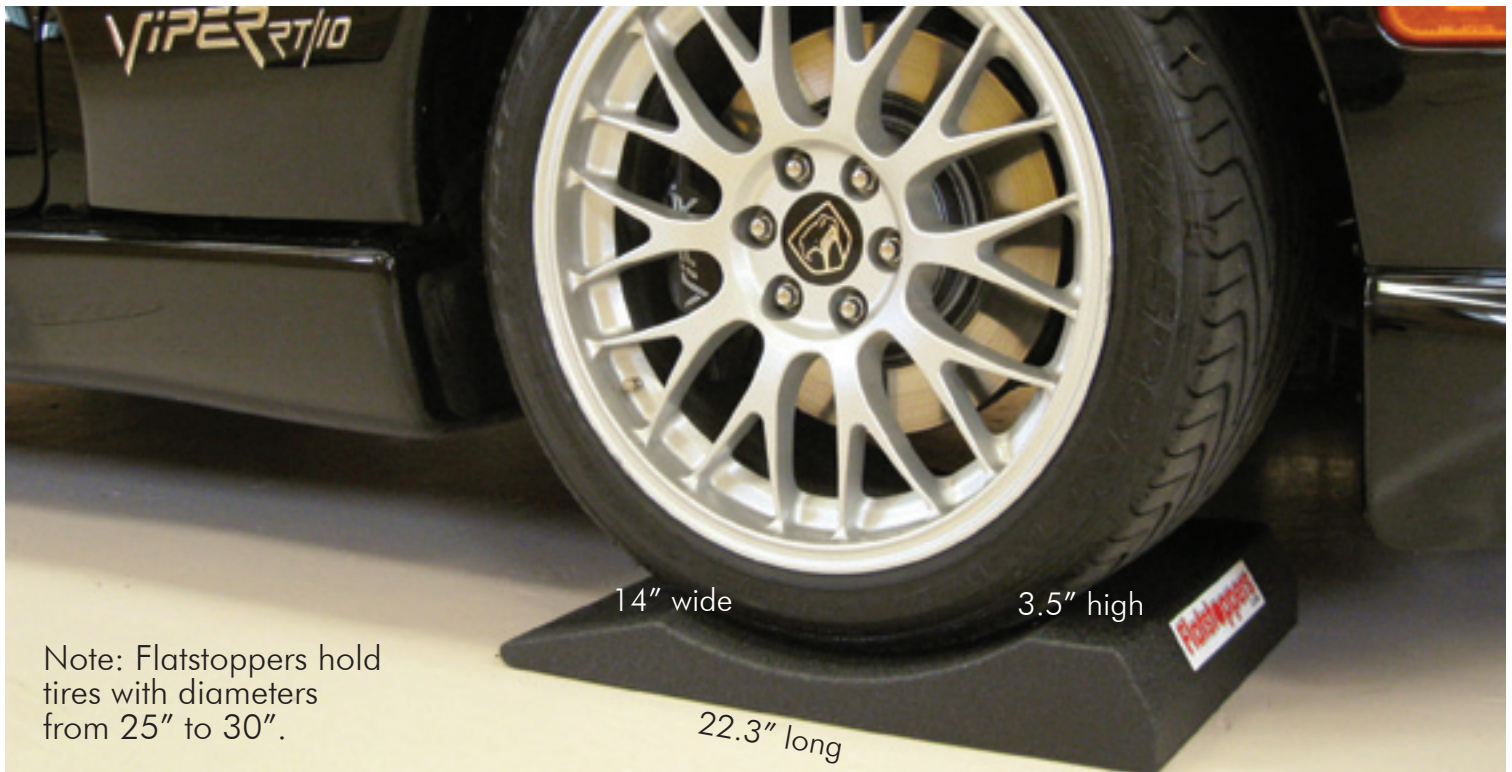
ADJUSTABLE WHEEL CRIBS

Quantity: 2

15" long x 8" high x 12" wide (raise vehicle 4" or 8")
 15" long x 10" high x 12" wide (raise vehicle 5" or 10")
 15.75" long x 12" high x 12" wide (raise vehicle 6" or 12")

Product: **RR-WC-8-2**
 Product: **RR-WC-10-2**
 Product: **RR-WC-12-2**

Adjustable Wheel Cribs are a two-piece version of our standard Wheel Cribs. Each crib comes as a stacked assembly of two interlocking pieces of equal height. Their design allows the vehicle to be lifted in incremental heights that provide clearance for a jack and a spacer. Each set supports 3,000 pounds, yet each crib weighs only 5 pounds! They can hold tires up to 12" wide with diameters from 25" to 30". You can use one set as either two 8"/10"/12" cribs or four 4"/5"/6" cribs when the set is split (heights depend on which model you purchase, see above).



Note: Flatstoppers hold tires with diameters from 25" to 30".



"I bought FlatStoppers to park my car on for the winter inside a car capsule so it could be left in neutral with the e-brake off. IF YOU HAVE ANY DOUBT ABOUT THESE RAMPS, GIVE THEM A TRY. I was trying to be gentle backing the car up on these things and was expecting them to 'squirt out' from behind the tires—but they did not budge. Whatever they are made of is super lightweight, but very tough."

—JP L., MA

FLATSTOPPERS®

Quantity: 4

22.3" long x 3.5" high x 14" wide Product: RR-FS

This product helps to keep your tires from flat spotting during long periods of storage. Once the tires are set in the FlatStoppers (on a level surface), they will settle into the pad's concave depression. More of the bottom portion of the tire will be fully supported, thus dispersing the weight of the car more evenly onto the tire and helping to prevent any flattening. FlatStoppers will not conduct heat or cold to your tires despite changing floor temperatures, will not damage your floor in any way, and will not slide.



TRAK-JAX®

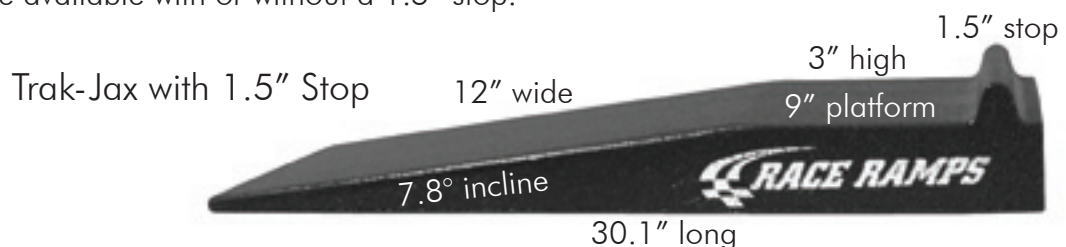
Quantity: 2

30.1" long x 3" high x 12" wide (with 7.8° incline)
With 1.5" Stop

Product: RR-TJ

Product: RR-TJ-S

Trak-Jax were inspired by an auto crosser that didn't want to buy a new, high-priced, low-profile jack just to change his tires at the track. These lightweight, durable ramps get low cars up high enough to fit a standard floor jack under the car. At less than 5 pounds each and only 30.1" long, you can even fit them in the trunk of a C5 or C6 Corvette. Trak-Jax are available with or without a 1.5" stop.





TRAILER RAMPS

Quantity: 2

46" long x 4" high x 14" wide (with 5.5° incline)

Product: **RR-TR-4**

67" long x 5" high x 14" wide (with 4° incline)

Product: **RR-TR-5**

45" long x 6" high x 14" wide (with 7.8° incline)

Product: **RR-TR-6**

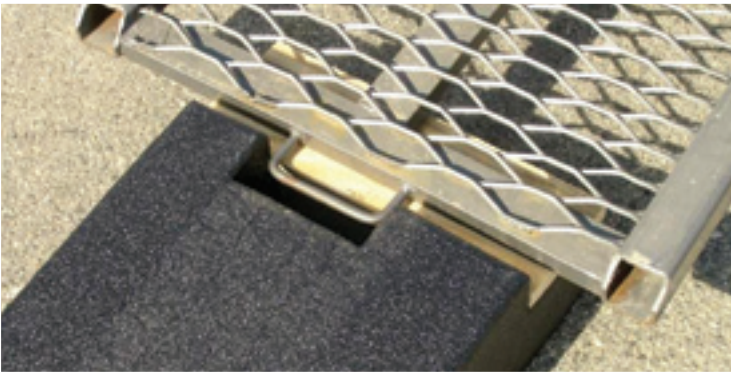
74" long x 7" high x 14" wide (with 5.2° incline)

Product: **RR-TR-7**

54.75" long x 8" high x 16" wide (with 8.4° incline)

Product: **RR-TR-8**

Is your trailer door too steep to get your car to the race track or autocross? Are you tired of busting up your nose? Race Ramps has just the solution for you: simply place the trailer door on the notch of these specially designed Trailer Ramps and decrease your angle of approach to as little as 4°. These hassle-free, lightweight ramps work for cars weighing up to 6,000 pounds. Trailer Ramps are ideal for low ground clearance cars with extra wide tires. Use the dimensions above to determine which size fits best with your vehicle and trailer.



"Used Race Ramps this weekend at the track and I just wanted to say **HOW IMPRESSED MY CREW AND I ARE WITH THE PRODUCT**. They are the perfect length, very light and worked great. After 25 years of dragging heavy boards around that usually end up damaging the car, either while loading, unloading or bouncing around in the trailer, your product is a great addition to our equipment."

—BILL M., CARLISLE EVENTS, CARLISLE, PA

BAN THE BOARD

Be safe. You, your friends, and your vehicle are worth it.

"Last year, I shot a 2x12 home-made ramp about thirty feet. I **COULD HAVE EASILY KILLED SOMEONE**. I just ordered a set of Trailer Ramps."

—BINK, CORVETTE FORUM
SENIOR MEMBER



We can customize a set of Trailer Ramps just for you. See the next page.



"Just wanted to say the money I spent on a set of your trailer ramps was **THE BEST MONEY I EVER SPENT**. No more plies of boards or wood, easy to carry. Should have purchased them a long time ago. Thanks again."

—MIKE M., WI



OUR MOST CUSTOMIZED PRODUCT

DON'T have a Trailer Ramp that will work for you?

Just follow these simple instructions to determine measurements A – E, then fax or e-mail them (along with your contact information) to (906) 789-7085 or info@raceramps.com. We'll provide you with a quote for your own custom Trailer Ramps!



SUGGESTIONS FOR MEASUREMENTS:

Measurement A: This measurement should be about the same as the thickness of your existing ramp or trailer door. This is the transition between the trailer ramp and your ramp/door.

Measurement B: This is the height that your existing ramp/door will be raised up off the ground. The higher this measurement, the longer your ramp will typically end up being, thus making the incline more gradual.

Measurement C: This area supports the weight of the trailer door/ramp and a large portion of the weight as the vehicle drives onto it. A minimum of 4" is recommended for proper weight displacement. Our standard is 5".

Measurement D: This measurement will determine the angle of the ramp. The longer this is, the more gradual the incline.

Measurement E: A minimum of 14" inches is recommended for proper trailer ramp/door weight distribution. Note: If ramp exceeds 10" in height, at our discretion we may widen this measurement for stability.

FACTORS TO KEEP IN MIND:

Angle of Approach. How steep of an incline can your vehicle approach before the front of the car hits the ramp?

Clearance. How much can your vehicle clear?

Departure Angle. As the vehicle goes up the ramp, the back end will go down—too steep of an angle and the rear end will hit.



TRAILER-MATES

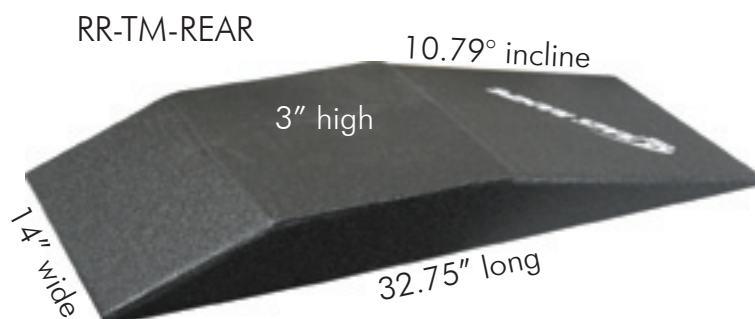
Quantity: 2

36" long x 3" high x 14" wide (with 10.79° incline)
 32.75" long x 3" high x 14" wide (with 10.79° incline)

Product: **RR-TM-FRT**
 Product: **RR-TM-REAR**

Trailer-Mates make it much easier to tie your low ground clearance vehicle down to the trailer. When a car is parked on the Mates, an additional 3" of ground clearance is created—giving you more room to reach the vehicle's tie-down points. They may give you the clearance needed to open the car door and clear the wheel well on the trailer, too. Trailer-Mates are extremely durable and lightweight and won't slide on (or scratch) the trailer surface. Concave depressions in the front Trailer-Mates help keep the vehicle from rolling during transport, while the rear Trailer-Mates are designed to simply drive over, making placement a snap. These can also be customized to meet your specific needs.

"I use Race Ramps a lot for detailing and maintenance and they are one **HECK OF A LOT SAFER** than what I had been using—and so lightweight. I store them on top of my garage cabinets! Now if I can get the neighbors to buy their own and quit borrowing mine!"
 —FRANK D., FL



MADE IN THE
USA





TRAILER SIDE KICKS

31" long x 7.5" high x 14" wide (with 11.5° incline)

Product: **RR-TR-SK-1**

Quantity: 1

31" long x 7.5" high x 14" wide (with 11.5° incline)

Product: **RR-TR-SK**

Quantity: 2



Trailer Side Kicks serve two purposes. First, they fit in front of a trailer's wheel wells to provide a tapered, protective guide between your vehicle's wheels and the trailer's steel wheel wells. Tall marker flags indicate their placement and help guide you onto the trailer without any scrapes or scratches. Second, Trailer Side Kicks can be used as ramps for changing a trailer tire. Simply drive the good tire onto the ramp and the flat tire will be lifted off of the ground for easy removal and replacement. Trailer Side Kicks lightweight but solid construction enables you to safely use them on any surface—pavement, grass, or even sand—without sinking. They are extremely durable and stable, supporting up to 8,000 pounds while weighing only 8 pounds each.



RR-TR-SP-24

TRAILER STEP

Quantity: 1

24" long x 11" high x 16" wide

Product: **RR-TR-SP-24**

30" long x 8" high x 11.25" wide

Product: **RR-TR-SP-30**

35.5" long x 8" high x 11.25" wide

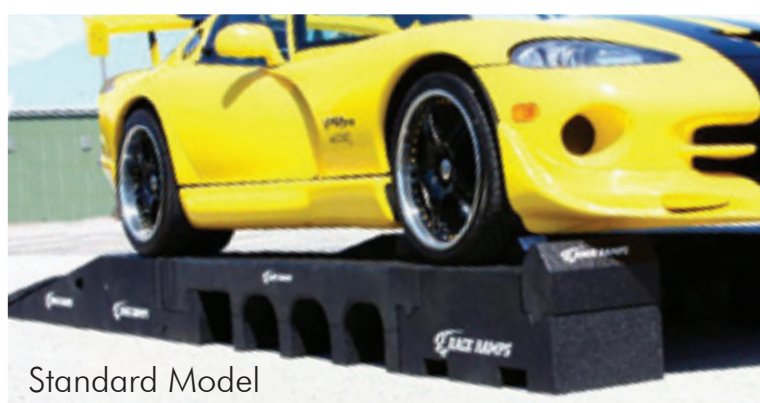
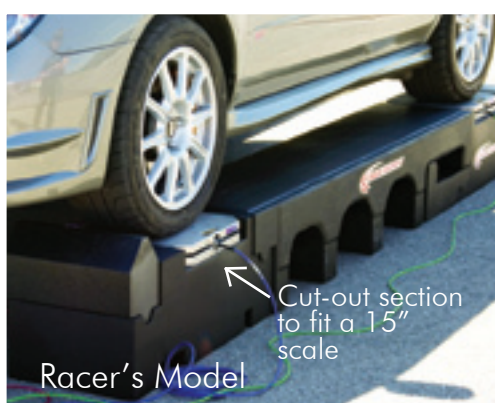
Product: **RR-TR-SP-36**

This portable step can be used as a free standing step for your trailer or around the shop to give you the added boost you need to get under the hood of that big rig! It is ideal for reaching the top of trailers or tow vehicles when washing and detailing and also serves as a good bench when servicing your car on Wheel Cribs or Race Ramps. It has a non-slip coating on all sides, is extremely lightweight, and has a strap on each side for easy carrying (or for hanging it on the wall). It fits in the step well of the trailer and each version weighs only 10 pounds.



Recipient of the
2008 SEMA
GLOBAL
MEDIA
PRODUCT
AWARD

RAMP EASILY DISASSEMBLES AND INTERLOCKS
FOR QUICK STORAGE AND USE



PORTABLE PIT STOP RAMP®

Standard Model

Racer's Model (with scale cut-outs)

Product: RR-PPS

Product: RR-PPS-R

This ramp was designed for car enthusiasts and racers alike, enabling them to get their car up 14" in the air with ease. The adjustable wheel base (from 98" to 110") makes it easy to accommodate a wide variety of cars. The Racer's Model comes with a cut-out section made to fit a 15" scale pad that is 2.5" thick. It also comes with a spacer to fill the cut-out when the scales are not needed. The Standard Model is completely flat and has no cut-out for scales. With no individual piece weighing more than 40 pounds, both models total 240 pounds, are 16" wide, and are 220" long when assembled.





WANT TO LOSE SOME WEIGHT? DUMP THOSE HEAVY STEEL RAMPS THAT CAME WITH YOUR LIFT!

RACK RAMPS

Quantity: 2

27.5" long x 4" high x 14" wide (with 9° incline)
40" long x 5.75" high x 14" wide (with 8° incline)

Product: **RR-RACK-4**

Product: **RR-RACK-5**

Rack Ramps are a dream come true for service centers and owners of four post lifts. They enable you to get modified, low-riding cars onto the service platform or lift without damaging the front end or your back, as you haul around 70 pound removable steel ramps! Rack Ramps textured surface prevents slipping, they weigh only 10 pounds each, and they come complete with a carrying handle for easy transport and storage. All three styles of Rack Ramps are made for a four post lift with removable ramps. Rack-5 Ramps have a lip that bridges over the operating rods or cables that run in front of the steel beam. Rack-4 Ramps are for a lift that has ramps permanently attached. They have a notch in them to accommodate the existing ramp and decrease the angle of approach by making the slope longer. If you need a different size, let us know and we can customize!



SAVE YOUR BACK

HOOK NOSED RACK RAMPS Quantity: 2

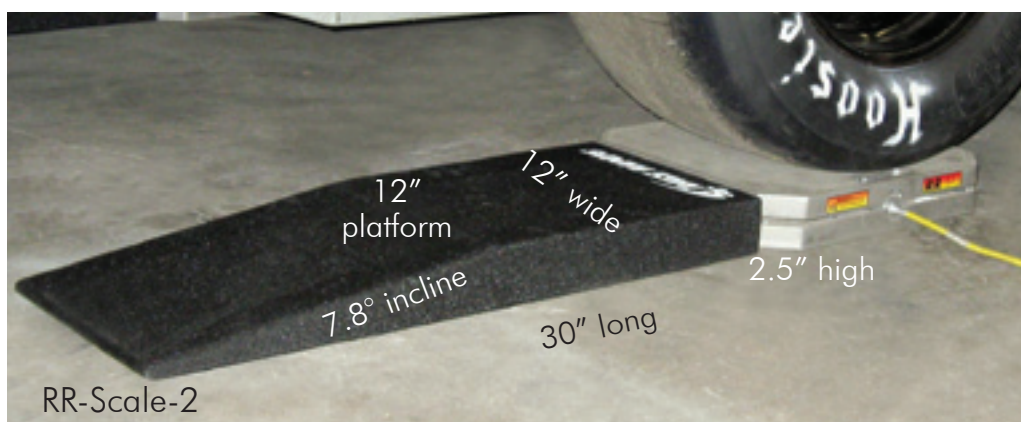
40" long x 4" high x 14" wide (with 6.7° incline) Product: **RR-RACK-HN14-4**
 51.5" long x 5" high x 14" wide (with 6.7° incline) Product: **RR-RACK-HN14-5**
 51.5" long x 5" high x 20" wide (with 6.7° incline) Product: **RR-RACK-HN20-5**

By popular demand, we now have a line of Rack Ramps with a hook nose on them, just like the factory ramps that came with your lift. What makes ours so special? It's the weight; ours weigh less than 1/4 the weight of the factory steel ramps, and they're longer so the front of your car doesn't rub on the way up!

The largest ramp weighs only 15.5 lbs, with the smaller ones even less! Easier to move and easier to store!



CHECK OUT WWW.RACERAMPS.COM FOR MORE DETAILED INFORMATION

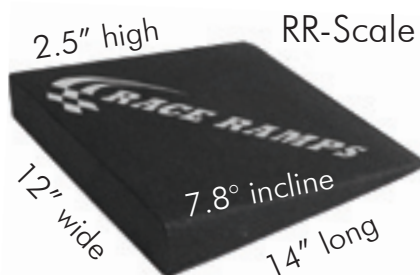


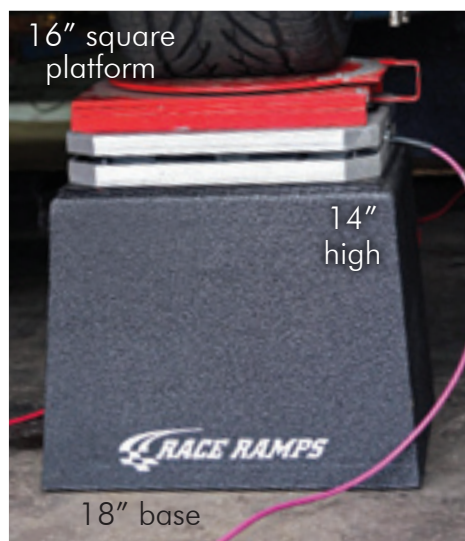
Roll your car off the scale pads, then back on again to release any side bind. Designed to fit any 15" scale pad that is 2.5" high. Enables the car to be rolled off the scale and back on with little effort.

SCALE RAMPS

14" long x 2.5" high x 12" wide (with 7.8° incline) Qty: 4 Product: **RR-SCALE**
 30" long x 2.5" high x 12" wide (with 7.8° incline) Qty: 2 Product: **RR-SCALE-2**

Scale Ramps rise 2.5" to work with all racing scales of this height. They are lightweight — less than 3 pounds each — and feature a textured surface that prevents slipping. Scale Ramps are constructed in one solid piece for strength and stability and provide a lower cost alternative to factory ramps.





WHEEL STANDS

Quantity: 2

18" base x 14" high x 16" platform

Product: **RR-WS-14**

Wheel Stands offer you a 16" square working platform to accommodate scales, a turntable, or to be used as a display block. They are lightweight (12 pounds per stand), yet very sturdy and stable. Their textured surface prevents slipping and they won't scratch or dent your car or floor.



SLIP PLATE STANDS

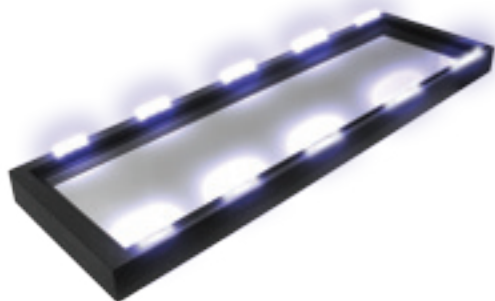
Quantity: 2

18" base x 14" high x 16" platform

Product: **RR-SPS**

These safe, lightweight, easy-to-transport platforms are designed for placement of wheel alignment slip plates or turntables to provide a portable alignment rack solution. Slip Plate Stands raise a vehicle 14" and support 1,500 pounds each—yet weigh only 15 pounds each. Built-in wheel stops help prevent the vehicle from rolling off the stands. Carry straps are mounted on the stands for easy transport and storage. The top platform measures 17.75" long by 16" wide.

CHECK BACK WITH US ON NEW PRODUCTS IN DEVELOPMENT!



SHOW MIRROR

ANGLED SHOW CRIBS



TOW TRUCK RAMPS

CHECK US OUT AT WWW.RACERAMPS.COM



SHOW RAMPS

Quantity: 2

26" long x 4.75" high x 14" wide (with 25° incline)

Product: **RR-SR**

Show Ramps were designed after going to several car shows and seeing what people go through to raise their car up and place a mirror on the ground to display its underside. They can be used to raise up the front, back, or side of the car—or get two sets and raise up the entire car to make it stand out. Show Ramps are a great lightweight (only 6 pounds each) alternative to jack stands, floor jacks, and wooden blocks. They reduce the risk of damaging your car, and they can be transported with no risk of sliding and denting your trunk.



SHOW CRIBS

Quantity: 2

20" long x 12" high x 12" wide

Product: **RR-SC**

20" long x 12" high x 18" wide (base) x 12" wide (top)

Product: **RR-SC-P**

Show Cribs are a safe, stylish, and lightweight way to raise your vehicle for display. They can cradle the tire up to 12" off of the ground or we can cut them down to meet your specifications. Show Cribs are available in two models: a full pyramid tapered on all four sides (RR-SC-P), or for a smaller footprint, the RR-SC. They provide an unobstructed view underneath the car, and their tapered design lends a dramatic air to any vehicle display. A set of four will support 6,000 pounds, and yet weigh only 7 to 9 pounds each.

LET US HELP YOU ACHIEVE YOUR DESIGN GOALS

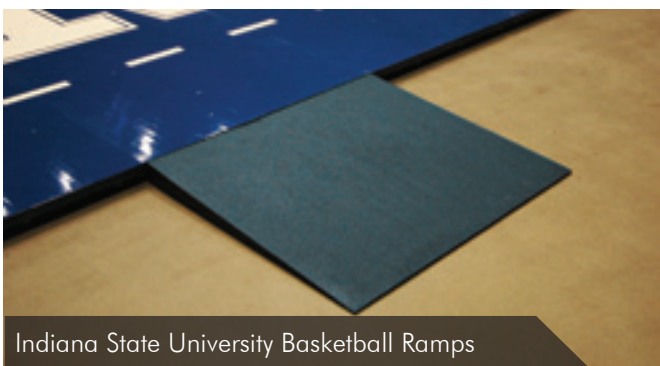
Custom Display Ramps

DCI Marketing contacted us after developing the display below with a built-in ramp. The ramp is 12' wide and 20' long with a 12" rise over the 20'. In the past, they used wood and metal to construct the ramp. It took two men two days to build. We created a ramp to fit their display and the assembly time was reduced to 30 minutes! Their new, lightweight, and sturdy ramp base comes in twelve modular pieces that go together in minutes, NOT days—saving them both time and money!



"The feedback we have received on our exclusively-designed Fit Shop mats has been extremely positive. The sales departments are very excited about them. THEY ARE VERY PROFESSIONAL LOOKING AND HEAVY DUTY."

—SHERI D.,
PROJECT MANAGER,
DCI MARKETING



Indiana State University Basketball Ramps



Lightweight Rocks



Two-Piece Trailer Ramp



Scissor Lift Ramp



Rack Ramp



Scale Ramp



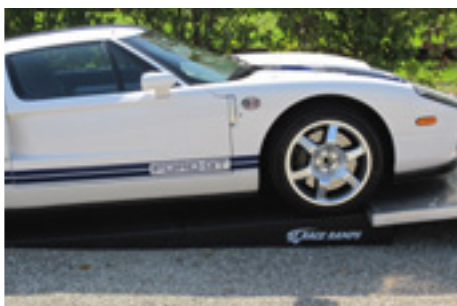
Wheelchair Ramps

These two-piece, adjustable Wheelchair Ramps can work with curbs or single stairs 2" to 5" high. We've made ramps for just about anything... call us with your application!

If you are interested in these custom products or have an idea of your own, call us at (866) 464-2788



Private label program available.



VEHICLE SERVICE RAMPS • FLATSTOPPERS® • TRAILER PRODUCTS
GARAGE GEAR • SHOW PRODUCTS • PORTABLE PIT STOP RAMP • TRAK-JAX®
AND NUMEROUS CUSTOM PRODUCTS TO MEET YOUR SPECIFIC NEEDS

Just a quick note to let you know
how great your Race Ramps are.
**THESE ARE THE BEST RAMPS I HAVE EVER
OWNED.** They're very easy to set up and store.
Thanks for a great product.
—JOHN B., AZ

CONTACT US

2003 23RD Ave N.
Suite A
Escanaba, MI 49829
Phone: (866) 464-2788
Fax: (906) 789-7085
info@raceramps.com

CHECK US OUT ON FACEBOOK AND TWITTER!

www.raceramps.com

