

Be a Part of the Legend

MICKEY THOMPSON®



STREET



STRIP



TRUCK

OFF-ROAD



2010 Performance Catalog



Be a Part of The Legend

Mickey Thompson himself is a legend and the tires that bear his name are just as legendary for their innovations in design and performance. One of the coolest things about owning a set of Mickey's is not only are you getting a great set of tires and wheels, when you own a set it makes you a part of the Mickey Thompson legend. Now that's an honor!

Truck Tires & Wheels

Mickey Thompson tires & wheels are built to handle even the most extreme conditions, so if you are cruising down the highway, running the Rubicon, or flying thru the desert you know these products will perform! Mickey Thompson's light truck radials are built tough for truck, 4x4, and SUV owners that demand more from their tires. A great selection of traditional and specialty light truck sizing, high load ratings, deeper tread, wider footprints, great ride characteristics, and great towing capability are just a few of the things that make Mickey Thompson light truck products better than the competition.



Street Tires & Wheels

Mickey Thompson tires are built exclusively for enthusiasts like you. We specialize in tires for drag racing, street rods, and muscle cars. That is why you'll find Mickey Thompson tires on the fastest, sleekest, and baddest cars on the planet! Our line of ET Street Radials, Sportsman S/R Radials, HR wheels and now the new Sportsman S/T Radial are the most sought after products by performance junkies, and custom hot rod builders all over the world!



Quality You Can Trust

All Mickey Thompson tires and wheels start with quality designs and are then built to exacting standards with high quality raw materials and processes. All Mickey Thompson products are warrantied for the life of the product to be free of manufacturers defects. Our engineering and quality assurance departments are hard at work ensuring that every product meets our tough standards before it gets to wear the M/T Stamp of Approval.

World Class Drag Tires

In the sport of drag racing Mickey Thompson ET Drag tires have become a force to be reckoned with. Last year many World and National Championships were won on M/T drag slicks and M/T racers set new world records. Mickey Thompson drag slicks continue to dominate the motorcycle, muscle car, sportsman, and sport compact drag racing classes, and with the great results we have been achieving in radial drag tire technology and big tire development Mickey Thompson is looking to expand it's market share in 2010 and beyond.



Legendary Off Road Tires

Mickey Thompson himself was a pioneer in the world of off-road racing and Mickey Thompson Tires has worked hard to maintain that legendary image by developing and producing some of the finest products available for high performance off-roading.



Experience The Mickey Thompson Difference And Become A Part Of The Legend!

Call Us At 800-222-9092 Or Visit Us At

www.mickeythompson tires.com

For The Latest News and To Find A Mickey Thompson Dealer Near You.



Drag Tires & Wheels

ET Drag	1-2
ET Drag - Pro Drag Radial	3
ET Street	4
ET Street Radial	5
ET Street Radial II	6
ET Drag Sport Compact	7
ET Front	8
ET Jr.	8
Compound and Construction Data	9
M/T Racing Tubes	9
ET Drag Motorcycle	10
Pro-5 Drag Wheels.....	11



Street Tires & Wheels

Sportsman S/T	12
Sportsman S/R	13
HR-1 / HR-2 Wheels.....	14
Sportsman Pro	15
Sportsman Front	15



Truck Tires & Wheels

Baja ATZ Plus	16
Baja ATZ	17
Baja MTZ	18
Baja Claw Radial	19
Baja Claw TTC.....	20
Baja Claw	20
Wheel Info.....	22
SideBiter Wheels	23
Classic II Wheels	24
Classic Lock Wheels	25
Classic Lock Color Rings.....	26
Replacement Caps	26



Off-Road Race Tires

Baja Pro	21
Mini Mag	21

Apparel & Promo

Mickey Thompson Promo Materials	27
Mickey Thompson Apparel.....	28



ET Drag®

Real world research and development give M/T® slicks the edge over competing brands! Engineered for maximum traction and consistent ET's with superior construction and compounding for nearly every drag race application.

- A Proven Drag Strip Winner
- Compounded for Maximum Traction
- Requires Little or No Burnout
- Engineered for Consistent Performance

Part #	Size	Appx. Weight	Compound	Suggested Tube	Meas. Rim	Section Width	Tread Width	Overall Dia.	Circ.
3010	22.0/8.0-13	14	L8	-	7	9.2	7.9	22.4	70
3014	24.5/8.0-13	16	L8	9553	7	10.5	7.7	24.5	77
3016	24.5/9.0-13	16	L8	9553	7	10.9	8.8	24.5	77
3020	26.0/8.5-14	18	L8	9553	8	10.2	8.2	26.0	82
3019	22.0/8.0-15	14	L8	-	7	8.6	7.9	22.4	70
3015	24.5/8.0-15	17	L8	9553	8	9.6	7.7	24.5	77
3052	26.0/8.5-15	19	L8	9553	8	9.9	8.1	25.9	82
3053	26.0/10.0-15	22	L8	9553	10	11.6	9.6	26.0	82
3053S	26.0/10.0-15S	24	M5	9553	10	11.5	9.8	26.5	83
3054	28.0/9.0-15	22	L8	9553	8	10.8	8.6	27.3	86
3055	28.0/10.5-15	23	M5	9553	10	11.7	10.0	28.1	88
3055C	28.0/10.5-15C	23	L4	9553	10	12.0	10.0	28.1	88
3055S	28.0/10.5-15S	24	M5	9553	10	11.7	10.0	28.1	88
3055W	28.0/10.5-15W	26	M5	9555	10	13.1	10.9	28.1	88
3057	28.0/11.5-15	26	M5	9555	10	12.9	11.0	28.0	88
3056	29.5/9.0-15	22	L8	9553	8	11.4	8.9	29.3	92
3056R	29.5/9.0R15 RADIAL	23	R1	Tubeless	10	11.5	8.5	29.5	92
3056ST	29.5/9.0-15ST	22	M5	9553	8	11.4	8.9	29.3	92
3062	29.5/10.5-15	25	M5	9555	10	13.1	10.2	29.9	94
3062S	29.5/10.5-15S	27	M5	9555	10	13.2	10.2	29.9	94
3062W	29.5/10.5-15W	30	M5	9555	10	13.6	11.2	29.6	93
3064	29.5/11.5-15	27	M5	9555	10	13.6	11.1	29.9	94

Acceptable practice for rim width is tread width plus or minus 1 inch. See Page 9 for Compound and Construction Data.
Important: All drag drive tires must be matched to be within 1/2" roll out.



Part #	Size	Appx. Weight	Compound	Suggested Tube	Meas. Rim	Section Width	Tread Width	Overall Dia.	Circ.
3065	29.5/13.5-15	29	M5	9555	12	16.0	13.1	30.2	95
3066	30.0/9.0-15	22	L8	9555	10	12.5	8.8	30.0	94
3067R	30.0/9.0R15 RADIAL	23	R1	Tubeless	10	11.8	8.5	30.0	93.75
3066R	30.0/9.0R15 RADIAL	23	R1	Tubeless	10	12.5	9.0	29.7	93
3068W	31.0/10.5-15W	33	M5	9555	10	14.5	10.8	31.3	99
3072	31.0/13.0-15	32	M5	9558	12	15.7	13.0	31.0	98
3073R	31.25/12.2R15W	30	R1	Tubeless	14	16.3	13.5	31.9	100
3073W	31.25/12.2-15W	29	L8	9558	12	15.8	13.2	31.5	98
3074	32.0/14.0-15	33	L8	9558	14	17.2	14.2	31.8	100
3074R	32.0/14.0R15 RADIAL	32	R1	Tubeless	14	17.4	14.0	32.3	101.75
3074S	32.0/14.0-15S	35	L8	9558	14	17.1	14.2	32.2	100
3074ST	32.0/14.0-15ST	36	M5	9558	14	17.1	14.2	32.2	100
30751	14.5/32.0-15	38	L8	9558	14	17.4	14.5	33.0	103
30761	32.0/16.0-15S	42	M8	9558	15	18.5	15.8	32.0	101
3069W	33.0/10.5-15W	33	M5	9558	10	14.5	11.2	32.9	103
3078R	33.0/14.5R15	35	R1	Tubeless	14	17.6	14.5	33.0	103.75
30791	33.0/15.0-15S	37	M8	9558	14	18.1	14.8	33.6	105
3084S	33.0/16.5-15S	41	L8	9558	15	20.0	16.7	33.5	105
3169W	33.0/10.5-16W	34	M5	9558	15	16.8	11.3	33.0	104
3185 *	33.5/16.5-16	42	M5	9558	16	20.8	16.5	33.7	106
3186 *	34.5/17.0-16	45	M5	N/A	16	21.0	17.0	35.0	110
3187 *	34.5/17.0-16	45	M7	N/A	16	21.0	17.0	35.0	110

* High Growth Tire

Acceptable practice for rim width is tread width plus or minus 1 inch. See Page 9 for Compound and Construction Data.

Important: All drag drive tires must be matched to be within 1/2" roll out.



ET Drag® Pro Drag Radial

M/T® Pro Drag Radials are the fastest Drag tires on the strip! The radial design allows for less rolling resistance for better ET's. Radial slicks will give you the edge over the competition!

- Radial Construction for Less Rolling Resistance
- Zero Growth for Predictable Gear Ratios
- A Proven Drag Strip Winner
- Compounded for Maximum Traction
- Requires Little or No Burnout
- Engineered for Consistent Performance
- Works best with Auto Trans Applications

Part #	Size	Appx. Weight	Compound	Suggested Tube	Meas. Rim	Section Width	Tread Width	Overall Diameter	Circ.
3056R	29.5/9.0R15	23	R1	Tubeless	10	11.5	8.5	29.5	92
3066R	30.0/9.0R15	23	R1	Tubeless	10	12.5	9.0	29.7	93
3067R	30.0/9.0R15	23	R1	Tubeless	10	11.8	8.5	30.0	93.75
3073R	31.25/12.2R15W	30	R1	Tubeless	14	16.3	13.5	31.9	100
3074R	32.0/14.0R15	32	R1	Tubeless	14	17.4	14.0	32.3	101.75
3078R	33.0/14.5R15	35	R1	Tubeless	14	17.6	14.5	33.0	103.75



Acceptable practice for rim width is tread width plus or minus 1 inch. See Page 9 for Compound and Construction Data.
Important: All drag drive tires must be matched to be within 1/2" roll out.



ET Street®

Worlds fastest D.O.T. class race tire. Same great features as our race winning ET Drag with a D.O.T. stamp that meets the rule book specifications for street tire classes. Tube type for extra sidewall strength, better air retention, more consistent ET's.

- D.O.T. Approved
- Compounded for Maximum Traction
- Requires Little or No Burnout
- Engineered for Consistent Performance

Part #	Size	Appx. Weight	Compound	Suggested Tube	Meas. Rim	Section Width	Tread Width	Overall Diameter	Circ.
3752	26X10.50-15LT	20	M5	9553	8	10.5	8.3	26.1	82
3753	26X11.50-15LT	22	M5	9553	10	12	9.8	26.3	82
3758	27X10.50-15LT	22	M5	9553	8	10.6	8.9	27.0	85
3754	28X11.50-15LT	22	M5	9553	8	11.1	8.6	27.6	87
3755	28X12.50-15LT	24	M5	9555	10	12.6	10.0	28.1	88
3757	28X13.50-15LT	28	M5	9555	10	13.2	11.0	28.0	88
3762	30X12.50-15LT	26	M5	9555	10	13.3	10.2	30.0	94
3763	30X13.50-15LT	31	M5	9555	10	13.7	11.1	30.0	94
3768	31X14.50-15LT	33	M5	9555	10	14.5	10.8	31.3	99
3772	31X16.50-15LT	34	M5	9558	12	15.5	12.4	31.5	99
3774	32X17.50-15LT	37	M5	9558	14	17.7	14.2	32.2	101
3780	33X18.50-15LT	43	M5	9558	14	18.8	15.8	33.3	104
3792	26X10.50-16LT	22	M5	9553	9	10.3	8.4	26.0	82
3793	26X11.50-16LT	24	M5	9553	10	10.8	9.7	26.2	82
3796	28X11.50-16LT	24	M5	9555	8	10.7	8.7	28.0	88
3743	26X11.50-17LT	23	M5	Tubeless	11	11.1	9.5	26.5	83

Acceptable practice for rim width is tread width plus or minus 1 inch. See Page 9 for Compound and Construction Data.
Important: All drag drive tires must be matched to be within 1/2" roll out.



***World's Fastest
Street Radial!***

ET Street® Radial

Mickey Thompson's legendary race tire technology comes to the street with the ET Street Radial. Built using the latest in high tech radial construction techniques and years of drag racing experience and compound development, this D.O.T. approved street legal drag radial will get your car down the track in record time and drive you home with sure handling and an excellent ride.

- Soft Compound for Superior Traction on the Drag Strip
- Special Sidewall Construction for Quick Launches
- Radial Construction for Excellent Ride Control on the Street
- Low Void, Directional Tread for Maximum Dry Traction
- Polyester Ply, Steel Belted for Strength and Durability

Part #	Size	Equivalent Size	Appx. Weight	Compound	Approved Rims	Meas. Rim	Section Width	Tread Width	Overall Diameter	Circ.
3752R	P235/60R15	26 X 9.50R15	27	R2	6.5-8.5	7	9.5	8.4	26.1	82
3753R	P275/50R15	26 X 11.50R15	31	R2	7.5-9.5	8.5	11.3	10.5	26.1	82
3756R	P255/60R15	27 X 10.50R15	30	R2	7-9	7.5	10.1	9.0	27.1	85
3754R	P275/60R15	28 X 11.50R15	33	R2	7.5-9.5	8	11.0	9.5	28.0	87
3755R	P295/55R15	28 X 12.50R15	TBD	R2	8-10.5	9.5	12.0	10.9	27.8	87
3757R	P325/50R15	28 X 13.50R15	37	R2	9-12	10	13.1	11.6	28.0	87
3762R	P295/65R15	30 X 12.50R15	38	R2	8-10	8.5	11.9	10.9	30.0	94
3763R	P315/60R15	30 X 13.50R15	39	R2	8.5-11	9.5	12.9	11.9	30.0	94
3793R	P255/50R16	26 X 10.50R16	29	R2	7-9	8	10.5	9.6	26.1	82
3743R	P275/40R17	26 X 11.50R17	28	R2	9-11	9	11	10.0	26.0	82



ET Street® Radial II

This version of the ET Street Radial is specifically designed for modern performance cars including sport compacts, Mustangs, Corvettes, Vipers and others that require bigger wheel diameters for brake clearance.

- Soft Compound for Superior Traction on the Drag Strip
- Radial Construction for Excellent Ride Control on the Street
- Polyester Ply, Steel Belted for Strength and Durability

**Optimized For
Modern Sports Cars
& Sport Compacts**

Part #	Size	Equivalent Size	Appx. Weight	Compound	Approved Rims	Meas. Rim	Section Width	Tread Width	Overall Diameter	Circ.
3730R	P205/50R14	22X8.50R14	19	R2	5.5-7.5	6.5	8.3	7.25	22.3	70
3732R	P215/60R14	24X8.50R14	20	R2	6-7.5	6.5	8.6	7.0	24.2	76
3750R	P205/50R15	23X8.00R15	22	R2	5.5-7.5	6.5	8.4	7.6	23.2	73
3751R	P225/50R15	24X9.00R15	23	R2	6-8	7	9.1	8.2	24.0	75
3795R	P315/45R16	27X12.50R16	34	R2	10-12	11	12.6	11.2	27.2	86
3794R	P295/50R16	28X11.50R16	33	R2	8-10	9.5	12.1	10.8	27.7	87
3740R	P205/40R17	24X8.50R17	19	R2	7-8	7.5	8.3	7.3	23.5	74
3744R	P315/35R17	26X12.50R17	31	R2	11-12	11	12.7	11.7	25.8	81
3745R	P295/45R17	28X11.50R17	33	R2	9.5-11	10	11.6	10.6	27.2	85
3780R	P245/40R18	26X9.50R18	25	R2	8-9.5	8.5	9.6	8.5	25.8	81
3784R	P315/30R18	26X12.50R18	30	R2	11-12	11	12.4	11.0	25.5	80
3782R	P265/40R18	27X10.50R18	28	R2	9-10	9.5	10.6	9.6	26.5	83
3785R	P305/35R18	27X12.50R18	31	R2	10-12	11	12.5	11.5	26.4	83
3788R	P345/35R18	28X13.50R18	35	R2	11-13	12	13.9	12.8	27.5	86
3786R	P305/45R18	29X11.50R18	32	R2	9.5-11	10	11.8	10.3	28.8	91



ET Drag[®] Sport Compact

The Number One Sport Compact Drag Tire. Real world research and development give M/T[®] slicks the edge over competing brands! Engineered for maximum traction and consistent ET's with superior construction and compounding for nearly every Sport Compact Drag Race application.

- A Proven Drag Strip Winner
- Compounded for Maximum Traction
- Requires Little or No Burnout
- Engineered for Consistent Performance
- Specialty Sizes for Sport Compact Applications

Part #	Size	Appx. Weight	Compound	Suggested Tube	Meas. Rim	Section Width	Tread Width	Overall Dia.	Circ.
3010	22.0/8.0-13	14	L8	-	7	9.2	7.9	22.4	70
3014	24.5/8.0-13	16	L8	9553	7	10.5	7.7	24.5	77
3016	24.5/9.0-13	16	L8	9553	7	10.9	8.8	24.5	77
3020	26.0/8.5-14	18	L8	9553	8	10.2	8.2	26.0	82
3019	22.0/8.0-15	14	L8	-	7	8.6	7.9	22.4	70
3015	24.5/8.0-15	17	L8	9553	8	9.6	7.7	24.5	77
3055C	28.0/10.5-15C	23	L4	9553	10	12.0	10.0	28.1	88
3056	29.5/9.0-15	22	L8	9553	8	11.4	8.9	29.3	92



Acceptable practice for rim width is tread width plus or minus 1 inch. See Page 9 for Compound and Construction Data.
Important: All drag drive tires must be matched to be within 1/2" roll out.



3001 3007
3005 3009
3006 3002

3008 3004

ET Front™

Complete line of front drag tires with applications for cars, dragsters, and land speed racers. Complements our ET Drag® drive tires for a complete race tire package.

- Ultra-Lightweight Design
- Reduces Rolling Resistance
- Acceptable for High Speed Use Tubeless

Part #	Size	Appx. Weight	Approved Rims	Meas. Rim	Section Width	Tread Width	Overall Dia.	Circ.
3005	22.5/4.5-15	7	3.5-5	4	5.1	4.1	22.5	71
3006	24.0/4.5-15	11	3.5-5	4	6.4	4.8	23.8	75
3001	25.0/4.5-15	11	3.5-4	4	6.5	4.5	25	78
3007	26.0/4.5-15	12	3.5-5	4	6.8	4.9	25.9	81
3009	27.5/4.5-15	13	3.5-5	4	7.0	5.0	27.3	86
3002	28.0/4.5-15	13	3.5-4.5	4	7.2	5.1	28.0	88
3008*	29.0/4.5-15	12	3.5-5	4	7.3	4.5	28.7	90
3004	22.0/2.5-17	4	2.5-2.5	2.5	2.7	1.5	22.0	67

* Not Acceptable for Land Speed Record Use.



ET Jr.®

#1 in Jr. Drag Racing tires, M/T® slicks have the edge over competing brands! Engineered for maximum traction and consistent ET's.

- A Proven Jr. Drag Winner
- Compounded for Maximum Traction
- Requires Little or No Burnout
- Engineered for Consistent Performance

Part #	Size	Appx. Weight	Compound	Meas. Rim	Section Width	Tread Width	Overall Dia.	Circ.
3621	18/8-8	6	M2	8	10.5	7.3	18.0	55
3623	18/8.5-8	6	M2	8	10.8	8.1	18.1	56
3644	19/8.0-10	9	M2	8	9.5	7.2	19.5	61

Acceptable practice for rim width is tread width plus or minus 1 inch. See Page 9 for Compound and Construction Data.
Important: All drag drive tires must be matched to be within 1/2" roll out.

Compound & Construction

M/T® Tires are compounded by size and application. The following points are general application suggestions. Mickey Thompson® is not responsible for misapplications. The catalog number suffix indicates a construction, size or compound enhancement for particular applications.

Medium			<<< Current Compound Selection >>>						Soft	
M7	M5	M8	R2	R1	L8	L7		B2	L4	M2

To identify the compound of your current M/T® ET Drag tires look at the serial number on the sidewall of the tire.

EXAMPLE: CY1J **M5** FJ2601
Compound Code

Construction:

ST	Suggested for manual transmissions (medium compound)
W	Extra tread width (please note actual tread and section width on spec sheet)
S	Stiff sidewall construction, aids in quicker reaction time due to less tire distortion Also Good in high horsepower applications and for heavy cars (Over 3,000 lbs)
C	Sport Compact
R	Radial Construction

Compounds:

B2	For Motorcycles
L4	FWD Vehicles
L7	For Motorcycles
L8	Good Compound for General Use
M2	For Jr. Dragsters
M5	Good Compound for General Use
M7	Good Compound for High Horsepower Applications With Clutch
M8	Agressive Compound for Index Racing, Works Well in All Ambient and Track Conditions
R1	Special Compound for ET Drag Radial
R2	Special Compound for ET Street Radial

M/T® Natural Rubber Tubes

100% Natural rubber tubes with an aircraft style removable valve stem that clamps to the wheel. Extremely light weight and durable these tubes are a must for racing applications. Natural rubber is far superior to other materials because of its ability to conform to sidewall distortion and its resistance to deterioration due to many heat cycles.

Part #	Size	Appx.Weight	Application
9553	9.50-15/16	4.1	24.5" To 28" Diameter with 8.0" To 10.5" tread
9555	11.50-15	5.6	28" To 31" Diameter with 10.5" To 11.5" tread
9558	15.00-15/16	8.1	31" To 33.5" Diameter with 12.0" To 17.0" tread

NOTE: Besides Being Required for Air Retention, M/T Tubes Will Enhance The Reaction Time, Increase Stiffness And Reduce Sidewall Shock And Deflection When Launching.



ET Drag[®] Motorcycle

Mickey Thompson ET Drag Motorcycle tires are consistently setting records and winning races. Mickey Thompson is #1 in Motorcycle Drag Racing and racers ask for M/T Motorcycle Drag Tires by name.

- A Proven Drag Strip Winner
- Compounded for Maximum Traction
- Requires Little or No Burnout
- Engineered for Consistent Performance

M/T Motorcycle tires are only available at select motorcycle dealers, visit us online at mickeythompson tires.com or call 330-928-9092 for a dealer near you.

Part #	Size	Appx. Weight	Compound	Meas. Rim	Section Width	Tread Width	Overall Dia.	Circ.
3053M	26.0/10.0-15M	19	L7	9	11.0	9.8	26.0	82
3064M	29.0/11.0-15M	23	M7	10	13.1	10.8	28.7	89
3065M	29.0/13.0-15M	26	M7	12	15.0	12.5	28.5	90
3073M	31.0/14.0-15M	34	L7	13	16.8	13.6	31.0	97
3158M	27.0/10.0-16M	20	L7	9	11.6	10.0	27.0	85
3295	190/50ZR17	11	B2	6	7.4	7.4	25.1	78
3221	26.0/7.0-17	13	M5	6.5	7.4	6.5	25.7	81
3210	2.50/2.75-18	6	NA	3	3.1	1.7	23.5	74
3220	25.0/5.5-18	11	L7	5	6.1	5.2	25.8	81
3222	25.0/7.0-18	12	L7	6.5	7.2	6.6	25.9	81



See Page 9 for Compound and Construction Data.



15" Front



17" Dragster Front



16"X16" Double Bead Lock

Pro-5™ ET Drag® Wheels

Fully forged and CNC-machined drag racing wheels offering the lightest practical weight and the greatest strength available from any aluminum wheel today. World's first one-piece, no weld, fully integrated bead-lock rears and stylish fronts provide state-of-the-art design and function for your drag race vehicle.

Part #	Size	Appx. Wt.	Bolt Circle	Back Space
5351545*	15x3.5	7.5	5x4.5	1.75
5352545*	15x3.5	8.4	5x4.5	2.25
5351547*	15x3.5	7.5	5x4.75	1.75
5352547*	15x3.5	8.4	5x4.75	2.25
5350000 †	15X3.5	7.4	Anglia Spindle	N/A
5350001 †	15X3.5	7.2	Strange Spindle	N/A
6164547DBL**	16X16	21.2	5X4.75	4
6165547DBL**	16X16	21.9	5X4.75	5
6166547DBL**	16X16	22.2	5X4.75	6
6164550DBL(SD)**	16X16	24.1	5X5	4
6165550DBL(SD)**	16X16	24.1	5X5	5
6164555DBL(SD)**	16X16	24.1	5X5.5	4
6165555DBL(SD)**	16X16	24.1	5X5.5	5
77252125 †	17x2.125	8	Anglia Spindle	1.06

* NOTE: Wheels pictured with center caps which are sold separately, order Part# 701216 if you would like center caps.

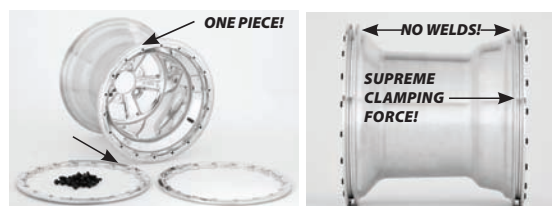
† All spindle mount wheels include center cap (Part # 701217) as shown. Bearing and seal kits are not included.

** Replacement beadlock rings and extra thick rings are available see table below for part numbers and descriptions (2 lock rings / 1 bolt kit needed per wheel). Cap not included order part # 701216.

(SD) Severe Duty, These wheels exceed SFI 15.3 Certification.

Pro-5™ Wheel Accessories

Part #	Description
701400	Bead-Lock Bolt Kit - 1" Length
701401	Bead-lock Bolt Kit - 1.250" Length (for thick ring kits)
701300	Bead-Lock Ring Standard - Polished
701301	Bead-Lock Ring - Thick - Polished (for thick bead tires)
701302	Bead-Lock Ring - Thick - Brushed (for thick bead tires)
701216	Standard Rear Cap - 3.180" Bore
701217	Pro-5 Spindle Mount Cap - Billet





Sportsman S/T™

Mickey Thompson introduces the all new Sportsman S/T Radial designed for muscle car owners demanding performance, quality and styling. Raised white letters, or black sidewall out, this all season performance tire will give your classic muscle car a wide low profile look along with the great handling and performance that your car deserves.

- Raised White Letters / Stylized Blackwall
- Popular Sizes for Muscle Cars
- Radial Construction for High Mileage and a Smooth Ride
- M&S Rated All-Season Performance Tread Design
- Flat Tread Profile for Improved Handling and Wear
- T Speed Rated 118 MPH (Part# 6031 S Rated)
- UTQG 440AB (Part # 6031 440AC)
- Tread Depth 11/32nds

Part #	Size	Sidewall	Service Desc.	Appx. Wt.	Max Load	Max PSI	Appr. Rims	Meas. Rim	Section Width	Tread Width	Overall Dia.
6024	P225/60R15	BLK	95T	23	1,521	44	6.0-8.0	6.5	8.6	7.2	25.7
6026	P235/60R15	RWL	98T	26	1,642	44	6.5-8.5	7.0	9.2	7.6	26.1
6027	P245/60R15	RWL	100T	26	1,753	44	7.0-8.5	7.0	9.5	8.0	26.6
6023	P215/70R15	RWL	97T	26	1,620	44	5.5-7.0	6.5	8.7	7.0	26.7
6031	P295/50R15	RWL	105S	32	2,061	44	8.0-10.0	9.5	12.22	10.1	26.8
6028	P255/60R15	RWL	102T	27	1,885	44	7.0-9.0	7.5	10.24	8.2	27.0
6025	P225/70R15	RWL	100T	27	1,753	44	6.0-7.5	6.5	9.1	7.2	27.4
6030	P275/60R15	RWL	107T	31	2,149	44	7.5-9.5	8.0	10.7	8.9	28.1





Sportsman S/R™

This modern day version of our classic Sportsman tire features radial construction and a unique flamed tread pattern. Extra wide rears, and matching fronts, make this tire a must for any street rod or street machine builder!

- Radial Construction for High Mileage and Smooth Ride
- H Speed Rated up to 130MPH
- Unique "Flamed" Tread Pattern that
- Provides Improved Wet Traction
- Custom Sizes for Street Rods and Muscle Cars
- Available for 15", 18", and 20" Wheel Diameters
- Matching Front "Skinny's" for Staggered Fitments
- Fronts can be used with our ET Street Radial

Part #	Size	Service Desc.	Appx. Weight	Max Load	Max @PSI	Appr. Rims	Meas. Rim	Section Width	Tread Width	Overall Diameter
6651	24X5.00R15LT	76H	15	900	50	3.5-4.5	4	5.8	4.5	24.0
6652	26X6.00R15LT	80H	20	990	35	3.5-5	4	6.5	5.7	26.0
6650	26X8.00R15LT	80H	21	1,000	35	5-7	6	8.5	7.0	26.1
6653	26X10.00R15LT	83H	23	1,075	35	7-9	8	10.3	8.8	26.1
6654	26X12.00R15LT	85H	26	1,150	35	8-10	10	12.0	10.6	26.1
6640	28X10.00R15LT	90H	27	1,335	35	7-8.5	8	10.3	8.7	28.0
6641	28X12.00R15LT	93H	31	1,435	35	8.5-10	10	12.1	10.4	28.0
6642	29X15.00R15LT	98H	42	1,700	35	10-13	12	15.0	13	29.0
6655	29X18.00R15LT	94H	49	1,500	25	14-16	14	17.6	15.8	29.0
6643	30X12.00R15LT	99H	36	1,740	35	8.5-10	10	12.6	10.2	30.0
6644	31X16.00R15LT	105H	47	2,080	35	12-14	12	16.0	13.9	31.0
6656	31X18.00R15LT	99H	50	1,720	25	14-16	14	17.9	15.7	31.0
6657	33X22.00R15LT	107H	59	2,200	25	15-18	15	20.0	17.8	32.0
6681	24X5.00R18LT	65H	14	650	50	3.5-4.5	4	5.2	4.5	24.0
6682	26X6.00R18LT	79H	18	980	50	4.5-5.5	5	6.3	5.7	26.0
6680	26X8.00R18LT	78H	21	960	50	5.5-7	6	7.7	7.2	26.2
6683	26X10.00R18LT	81H	24	1,020	50	8-9	9	9.5	8.8	26.2
6684	26X12.00R18LT	83H	27	1,075	50	8-10	10	11.0	10.6	26.4
6670	28X10.00R18LT	90H	28	1,350	50	7.5-9	8	9.8	8.7	27.9
6671	28X12.00R18LT	94H	33	1,480	50	9-10	10	11.6	10.6	28.0
6685	29X18.00R18LT	87H	49	1,200	25	15-16	15	17.2	15.5	29.0
6672	30X12.00R18LT	93H	36	1,460	35	9-11	10	12.3	10.2	29.9
6686	31X18.00R18LT	97H	50	1,625	25	14-16	15	17.6	15.5	31.0
6687	33X22.00R18LT	102H	59	1,900	25	15-18	16	19.3	17.8	32.0
6620	29X15.00R20LT	93H	41	1,460	50	13-14	14	14.7	13.0	29.0
6625	29X18.00R20LT	80H	46	1,000	35	15-16	16	17.2	15.5	29.0
6621	31X16.00R20LT	94H	47	1,500	35	12-14	14	15.9	13.9	31.0
6626	31X18.00R20LT	94H	50	1,500	25	15-16	16	17.3	15.7	31.1
6627	33X22.00R20LT	97H	58	1650	25	16-18	17	18.9	17.8	32.0

HR-1 Wheels

One-piece rotary-forged aluminum wheel with distinctive styling and a highly polished, mirror-like finish, this top quality wheel will make your hot rod or street rod stand out from the crowd! Available in sizes up to an incredible 20x16! The perfect wheels to complement our Sportsman S/R Radial.

Part #	Size	Appx. Wt.	Bolt Circle	Back Space
15405451	15x4	14	5-4.50	1.50
15405471	15x4	14	5-4.75	1.50
15605453	15x6	16	5-4.50	3.25
15605473	15x6	16	5-4.75	3.25
18455451	18x4.5	20	5-4.50	1.75
18455471	18x4.5	20	5-4.75	1.75
18605453	18x6	23	5-4.50	3.13
18605473	18x6	23	5-4.75	3.13
18155455	18x15.5	30	5-4.50	5.00
18155475	18x15.5	30	5-4.75	5.00
12165455	20x16	38	5-4.50	5.00
12165475	20x16	38	5-4.75	5.00



Replacement Center Cap Use Part # 10101

HR-2 Wheels

One-piece rotary-forged aluminum wheel with distinctive styling and a highly polished, mirror-like finish, this top quality wheel will make your hot rod or street rod stand out from the crowd! Available in sizes up to an incredible 20x16! The perfect wheels to complement our Sportsman S/R Radial. HR-2 IS LIMITED TO QUANTITY ON HAND, WHILE SUPPLIES LAST.



Replacement Center Cap Use Part # 10101

Part #	Size	Appx. Wt.	Bolt Circle	Back Space
25405451	15x4	17	5-4.50	1.50
25405471	15x4	17	5-4.75	1.50
25605453	15x6	20	5-4.50	3.25
25605473	15x6	20	5-4.75	3.25
28455451	18x4.5	23	5-4.50	1.75
28455471	18x4.5	23	5-4.75	1.75
28605453	18x6	25	5-4.50	3.13
28605473	18x6	25	5-4.75	3.13
28155455	18x15.5	33	5-4.50	5.00
28155475	18x15.5	33	5-4.75	5.00
22165455	20x16	40	5-4.50	5.00
22165475	20x16	40	5-4.75	5.00



Sportsman Pro®

Widest high performance street legal tire for Hot Rods, T-Buckets, and Muscle Cars that have shortened rear ends and tubbed fender wells. The Sportsman Pro has a street tire tread and a drag tire compound for serious street and vintage car racers. Air them down for powerful wrinkle wall style launches.

- Widest Hi-Performance Street Legal Tire
- D.O.T. Approved
- Wrinkle Wall Sidewall
- Drag Compound
- Bias Ply Construction**

Proper Size And Type Of Tube MUST Be Used With All Tube Type Tires. See Page 9 for Tube Information.
 ** CAUTION: It Is Not Recommended That Radial And Non-Radial Tires Be Mixed On The Same Vehicle.

Part #	Size	Appx. Wt.	Sugg. Tube	Appr. Rims	Meas. Rim	Section Width	Tread Width	Overall Dia.
6542	26X10.50-15LT	23	9553	7-10	8	10.4	8.0	26.0
6544	26X12.50-15LT	26	9553	8-11	10	11.9	10.0	26.0
6546	28X10.50-15LT	23	9553	7-9	8	11.2	8.3	28.0
6548	28X12.50-15LT	26	9553	8-11	10	13.1	10.4	28.0
6557	29X12.50-15LT	27	9555	8-11	10	13.0	10.0	29.0
6558	29X15.50-15LT	32	9558	10-13	12	15.3	12.7	29.0
6559	29X18.50-15LT	37	9558	14-16	14	17.6	15.5	29.0
6560	31X16.50-15LT	34	9558	12-14	12	15.7	12.2	31.0
6562	31X18.50-15LT	37	9558	14-16	14	17.5	14.3	31.0
6564	33X19.50-15LT	39	9558	14-16	14	18.0	14.5	32.0
6565	33X21.50-15LT	44	9558	15-18	15	19.6	16.6	32.0

Sportsman Front™

- Matching Front Tires for Sportsman Pro
- Bias Ply Construction**

Part #	Size	Appx. Wt.	Sugg. Tube	Appr. Rims	Meas. Rim	Section Width	Tread Width	Overall Dia.
1572	26X7.50-15	16	Tubeless	3.5-6.5	4	6.3	4.8	26.0
1573*	26X7.50-15 8 PLY	19	Tubeless	3.5-6.5	4	6.3	4.8	26.0
1575	26X8.50-15	22	Tubeless	4.5-7	6	8.3	6.7	27.0
1574	28X7.50-15	20	Tubeless	3.5-6.5	4	6.9	5.5	28.0

* Front Tire for Cars And Trucks Over 3,000 Lbs.

Proper Size And Type Of Tube MUST Be Used With All Tube Type Tires. See Page 9 for Tube Information.
 ** CAUTION: It Is Not Recommended That Radial And Non-Radial Tires Be Mixed On The Same Vehicle.



Baja ATZ™ Plus

Built for highway and light off-road use, the ATZ Plus is a great choice for your work truck or daily drive. The ATZ Plus is mud and snow rated for all-season traction, gives you a smooth quiet ride and high mileage all while delivering legendary Mickey Thompson performance!

- Advanced Radial Construction for High Mileage and Smooth Ride
- High Load Ratings for Great Towing Capabilities
- Solid Center Rib for Enhanced Ride & Handling
- Spiral Nylon Over Wraps for Better Handling & Performance
- Outlined White Letters (most sizes)
- Siped Tread Lugs for Better Grip on Smooth Surfaces & Ice

Part #	Size	Size Equivalent	Side Wall	Serv. Desc.	Appx. Load Wt. Range	Max Load*	Max PSI	Appr. Rims	Meas. Rim	Section Width	Tread Width	Overall Dia.	Tread Depth 32nds
5150	30X9.50R15LT		OWL	104R	36 C	1,985	50	6.5-8.5	7.5	9.3	7.3	29.3	16.5
5151	31X10.50R15LT		OWL	109R	40 C	2,270	50	7-9	8.5	10.5	8.2	30.3	16.5
5152	32X11.50R15LT		OWL	113R	44 C	2,535	50	8-10	9	11.4	9.0	31.5	17
5153	33X12.50R15LT		OWL	108R	50 C	2,205	35	8.5-11	10	12.5	9.6	32.5	17
5160	LT225/75R16	28X9.50R16	BLK	115R	38 E	2,680	80	6-7	6	8.9	6.9	29.4	16.5
5161	LT245/75R16	31X9.50R16	OWL	120R	43 E	3,042	80	6.5-7.5	7	9.6	7.4	30.5	16.5
5164	LT235/85R16	32X9.50R16	OWL	120R	43 E	3,042	80	6-7	6.5	9.4	6.7	31.8	16.5
5162	LT265/75R16	32X10.50R16	OWL	123R	48 E	3,415	80	7-8	7.5	10.6	7.8	31.8	16.5
5163	LT285/75R16	33X11.50R16	OWL	122R	51 D	3,305	65	7.5-9	8	11.5	8.8	32.9	17
5165	LT305/70R16	33X12.50R16	OWL	118R	55 D	2,910	50	8-9.5	9	12.2	9.7	33.0	17
5166	LT315/75R16	35X12.50R16	OWL	121R	62 D	3,195	50	8-10	8.5	12.9	9.8	34.8	17
5170	LT245/70R17	31X9.50R17	OWL	119R	43 E	3,000	80	6.5-8	7	9.8	7.3	30.6	16.5
5171	LT265/70R17	32X10.50R17	OWL	121R	50 E	3,195	80	7-9	8	10.7	8.5	31.6	16.5
5174	LT285/70R17	33X11.50R17	OWL	121R	52 D	3,195	65	7.5-9	8.5	11.5	9.0	32.8	17
5173	33X12.50R17LT		OWL	114R	55 D	2,600	50	8.5-11	10	12.5	9.6	32.5	17
5175	LT315/70R17	35X12.50R17	OWL	121R	61 D	3,195	50	8.5-10	9.5	12.9	9.9	34.9	17
5180	LT275/65R18	32X11.50R18	OWL	123R	52 E	3,415	80	7.5-9.5	8	11.0	8.8	32.1	16

* ALL SPECS ARE FOR SINGLE REAR TIRE APPLICATIONS

Select Sizes Feature



**Traditional
Sizes**

**Specialty
Sizes**

Baja ATZ™

All terrain traction for the grip you need on your weekend adventures, with the smooth ride you want to get you down the road in comfort. Features an extra wide footprint and beefy tread blocks for great all around traction. The Baja ATZ is available up to 38 inches tall and select sizes have PowerPly™ 3-ply sidewalls.

- Radial Construction for High Mileage and Smooth Ride
- High Load Ratings for Great Towing Capabilities
- Self Cleaning Tread With "Stone Kicker" Rock Ejectors
- Extra Wide Footprint for Better Traction and Even Wear
- SideBiters® for Added Traction & Sidewall Protection
- Siped Tread Lugs for Better Grip on Smooth Surfaces & Ice

Part #	Size	Size Equivalent	Side Wall	Serv. Desc.	Appx. Load Wt. Range	Max Load*	Max PSI	Appr. Rims	Meas. Rim	Section Width	Tread Width	Overall Dia.	Tread Depth 32nds
5353	33X12.50R15LT		OWL	108Q	52 C	2,205	35	8.5-11	10	12.4	9.8	32.6	20
5362	LT265/75R16	32X10.50R16	OWL	123Q	48 E	3,415	80	7-8	7.5	10.5	8.1	31.8	18
5363	LT285/75R16	33X11.50R16	OWL	122N	57 D	3,305	65	7.5-9	8	11.3	9.2	32.8	20
5365	LT305/70R16	33X12.50R16	OWL	118Q	57 D	2,910	50	8-9.5	9	12.3	10.0	32.8	18
5366	LT315/75R16	35X12.50R16	OWL	121Q	65 D	3,195	50	8-10	8.5	12.9	10.0	34.6	20
5371	LT265/70R17	32X10.50R17	OWL	121Q	51 E	3,195	80	7-9	8	10.7	8.4	31.7	18
5374	LT285/70R17	33X11.50R17	OWL	121Q	55 D	3,195	65	7.5-9.5	8.5	11.4	9.1	32.8	18
5373	LT305/65R17	33X12.50R17	BLK	121N	59 E	3,195	65	8.5-11	9	12.2	9.8	32.6	20
5375	35X12.50R17LT		OWL	119Q	67 D	3,000	50	8.5-11	10	12.9	10.2	34.9	20
5388	LT275/70R18	33X11.50R18	OWL	125Q	56 E	3,640	80	7-9	8	11.0	8.8	33.3	18
5387 +	LT305/60R18	33X12.50R18	BLK	121Q	65 E	3,195	65	8.5-11	9	12.1	9.8	32.6	20
5181+	LT325/60R18	33X13.50R18	BLK	124Q	76 E	3,525	65	9-12	9.5	13.3	10.8	33.2	19
5389 +	LT305/70R18	35X12.50R18	BLK	126Q	71 E	3,750	65	8-10	9	12.2	9.8	35.0	20
5183+	LT325/65R18	35X13.50R18	BLK	127N	79 E	3,860	65	9-12	9.5	13.5	10.8	34.8	19
5185+	37X13.50R18LT		BLK	124Q	90 D	3,525	50	8.5-11	11	13.9	10.7	36.8	20.5
5328 +	LT305/55R20	33X12.50R20	BLK	121Q	66 E	3,195	65	8.5-11	9.5	12.5	10.1	33.4	20
5120+	LT325/50R20	33X13.50R20	BLK	120N	73 E	3,085	65	9-12	10	13.2	10.8	33.0	19
5329 +	35X12.50R20LT		BLK	121Q	71 E	3,195	65	8.5-11	10	12.5	9.8	34.5	20
5121+	35X13.50R20LT		BLK	122Q	81 E	3,305	65	8.5-11	11	13.6	10.7	34.8	19
5122+	36X15.50R20LT		BLK	124N	94 E	3,525	65	11-13	12	15.5	12.2	36.3	19
5123+	38X15.50R20LT		BLK	124N	101 D	3,525	50	11-13	12	15.5	12.2	37.6	19

Specialty Sizes shown in **BOLD** type
+ 3 Ply PowerPly Sidewall

* ALL SPECS ARE FOR SINGLE REAR TIRE APPLICATIONS

All Baja MTZ Radials Feature



**Specialty
Sizes**

**Traditional
Sizes**

Baja MTZ™

Extreme off-roaders will appreciate the great ride and handling that this mud tire has on the highway. The MTZ has Mickey Thompson's Power Ply™ sidewalls with a special angled third ply to give you high performance handling, better puncture resistance, and improved towing capability.

- Advanced Radial Construction for High Mileage & Smooth Ride
- Self Cleaning High-Void Tread Lugs for Traction in Mud & Snow
- Deep Shoulder Lugs Provide Aggressive Traction and Bold Looks
- Enhanced SideBiters® for Added Traction & Protection
- Siped Tread Lugs for Better Grip on Smooth Surfaces & Ice
- Outlined White Letters on Most Traditional Sizes

Part #	Size	Size Equivalent	Side Wall	Serv. Desc.	Appx. Load Wt. Range	Max Load*	Max PSI	Appr. Rims	Meas. Rim	Section Width	Tread Width	Overall Dia.	Tread Depth 32nds
5251	31X10.50R15LT		OWL	109Q	47 C	2,270	50	7-9	8.5	10.9	8.3	30.8	19
5253	33X12.50R15LT		OWL	108Q	56 C	2,205	35	8.5-11	10	12.1	9.7	32.8	20.5
5254	35X12.50R15LT		OWL	113Q	66 C	2,535	35	8.5-11	10	12.2	10.0	34.8	19.5
5262	LT265/75R16	32X10.50R16	OWL	123Q	53 E	3,415	80	7-8	7.5	10.1	8.3	32.0	18.5
5263	LT285/75R16	33X11.50R16	OWL	122Q	56 D	3,305	65	7.5-9	8	11.3	8.9	33.1	18.5
5265	LT305/70R16	33X12.50R16	OWL	118Q	61 D	2,910	50	8-9.5	9	12.0	9.8	33.1	19
5266	LT315/75R16	35X12.50R16	OWL	121Q	67 D	3,195	50	8-10	8.5	11.9	9.8	34.5	19
5268	LT375/65R16	36X15.50R16	BLK	126N	89 D	3,750	50	10-13	11	15.0	12.2	35.4	23
5269	LT395/70R16	38X15.50R16	BLK	123Q	93 C	3,415	35	10-12	12	16.0	12.2	37.9	23
5271	LT265/70R17	32X10.50R17	OWL	121Q	53 E	3,195	80	7-9	8	10.8	8.3	31.9	18.5
5272	LT285/70R17	33X11.50R17	OWL	121Q	58 D	3,195	65	7.5-9.5	8.5	11.5	8.9	33.0	18
5273	33X12.50R17LT		OWL	114Q	63 D	2,600	50	8.5-11	10	12.5	9.8	32.8	20.5
5275	LT315/70R17	35X12.50R17	OWL	121Q	68 D	3,195	50	8.5-10	9.5	11.9	9.8	34.6	19
5277	37X12.50R17LT		BLK	124P	83 D	3,525	50	8.5-11	10	13.1	10.0	36.9	23
5288	LT275/70R18	33X11.50R18	BLK	125Q	62 E	3,640	80	7-9	8	11.0	8.8	33.4	20.5
5289	LT305/60R18	33X12.50R18	BLK	121Q	64 E	3,195	65	8.5-11	9	12.1	9.8	32.6	20.5
5281	LT325/60R18	33X13.50R18	BLK	124N	75 E	3,525	65	9-12	9.5	13.3	10.5	33.2	20.5
5290	LT305/70R18	35X12.50R18	OWL	126Q	71 E	3,750	65	8-10	9	12.2	9.8	35.1	20.5
5283	LT325/65R18	35X13.50R18	BLK	127N	78 E	3,860	65	9-12	9.5	13.5	10.6	34.8	20.5
5227	LT305/55R20	33X12.50R20	BLK	121Q	69 E	3,195	65	8.5-11	9.5	12.5	10.1	33.5	20.5
5226	35X12.50R20LT		BLK	121Q	70 E	3,195	65	8.5-11	10	12.5	9.8	34.7	20.5
5222	36X15.50R20LT		BLK	124N	92 E	3,525	65	11-13	12	15.3	11.9	36.4	21
5223	38X15.50R20LT		BLK	124N	99 D	3,525	50	11-13	12	15.7	12.2	37.9	23

Specialty Sizes shown in **BOLD** type

* ALL SPECS ARE FOR SINGLE REAR TIRE APPLICATIONS

Select Sizes Feature



Baja Claw® Radial

The Baja Claw Radial is built for anything you can throw at it. Get extreme traction and rugged off-road performance with the Claw's 23 degree tread pattern, large SideBiters®, and tough puncture resistant sidewalls. Go where you want with the confidence that the Baja Claw will pull you through!

- Advanced Radial Construction for High Mileage & Smooth Ride
- Self Cleaning High-Void Tread Lugs for Traction in Mud & Snow
- Circumferential Grooves for Hydroplane Resistance
- Aggressive SideBiters® for Added Traction & Protection
- Directional 23 Degree Tread Pattern and Extra Wide Footprint for Extreme Traction
- PowerPly™ 3-Ply Sidewall on Specialty Light Truck Sizes

														Tread
Part #	Size	Size Equivalent	Side Wall	Serv. Desc.	Appx. Load Wt. Range	Max Load*	Max PSI	Appr. Rims	Meas. Rim	Section Width	Tread Width	Overall Dia.	Tread Depth 32nds	
5751	31X10.50R15LT		BLK	109Q	42 C	2,270	50	7-9	8.5	10.5	8.3	30.5	20	
5754	33X12.50R15LT		BLK	108Q	52 C	2,205	35	8.5-11	10	12.8	9.9	32.5	20.5	
5756	35X12.50R15LT		BLK	113Q	63 C	2,535	35	8.5-11	10	12.9	10.0	34.9	20.5	
5763	LT285/75R16	33X11.50R16	BLK	122Q	54 D	3,305	65	7.5-9	8	11.3	8.9	33.1	16.5	
5766	LT305/70R16	33X12.50R16	BLK	118N	57 D	2,910	50	8-9.5	9	11.9	9.8	32.9	18.5	
5768	LT315/75R16	35X12.50R16	BLK	121Q	62 D	3,195	50	8-10	8.5	12.5	9.8	34.8	20	
5769+	LT325/80R16	37X13.50R16	BLK	124Q	84 D	3,525	50	8.5-11	9	13.1	10.8	36.9	22.5	
5774	33X12.50R17LT		BLK	114Q	57 D	2,600	50	8.5-11	10	12.5	10.0	32.5	20.5	
5776	35X12.50R17LT		BLK	119Q	63 D	3,000	50	8.5-11	10	12.7	9.8	34.9	20.5	
5722+	35X13.50R20LT		BLK	122N	76 E	3,305	65	8.5-11	11	13.7	10.5	34.7	21	

Specialty Sizes shown in **BOLD** type
+ 3 Ply PowerPly Sidewall

* ALL SPECS ARE FOR SINGLE REAR TIRE APPLICATIONS



Baja Claw® TTC

The new 54-inch Baja Claw TTC is an ultra aggressive off-road performance tire with an advanced bias belted construction specially designed for rugged off-road. Although there is some resemblance, the Baja Claw TTC is a complete redesign of the original Baja Claw with many added features!

- First tire with directional SideBiters
- Deep shoulder lugs and integrated concave blades to disperse mud and maintain maximum performance
- Features Mickey Thompson's T5 compound making it extremely durable and cut resistant.
- De-coupling elements and multi-angle siping were added to provide maximum traction on smooth rock surfaces.

Part #	Size	Appx. Wt.	Load Range	Max Load*	Max PSI	Appr. Rims	Meas. Rim	Section Width	Tread Width	Overall Dia.	Tread Depth 32nds
2828	19.5/54-20LT	208	C	3,650	30	12-16	12	20.7	15.2	53.8	26



Baja Claw®

The Baja Claw is designed for extreme driving conditions including rock crawling, mud, snow, sand, dirt, and gravel. Extra large SideBiters® and a cut resistant sidewall make this the toughest tire for any truck or SUV. Available in 38.5" and 46" sizes.

Part #	Size	Appx. Wt.	Load Range	Max Load*	Max PSI	Appr. Rims	Meas. Rim	Section Width	Tread Width	Overall Dia.	Tread Depth 32nds
2674	19.5/46-15LT	138	C	3,200	30	12-16	14	20.5	14.6	46.0	28
2676	16/38.5-16LT	102	C	3,415	30	10-12	12	16.5	12.5	39.0	21
2678	19.5/46-16LT	137	C	3,500	30	12-16	14	20.5	14.6	46.0	28
2686	16/38.5-16.5LT	101	C	3,415	30	9.75-12	12	16.5	12.5	39.0	21
2698	19.5/46-20LT	149	C	3,500	30	12-16	14	18.8	14.6	46.0	28

* ALL SPECS ARE FOR SINGLE REAR TIRE APPLICATIONS

Off-Road Race Tires

Mickey Thompson Baja Pro™ and Mini Mag™ off-road tires are purpose built for desert racing. These tires feature a tough bias belted construction for superior strength and impact resistance. Many Baja 1000 racers have won their class on these time tested treads!



Baja Pro™



2548

2554

Mini Mag™



2551

Part #	Product Model	Size	Appx. Wt.	Approved Rims	Meas. Rim	Section Width	Tread Width	Overall Dia.
2548*	Baja Pro	30/7.0-15	28	3-6	4	6.9	4.9	30.0
2554*	Baja Pro	33/9.0-15	37	4-8	7	9.6	7.8	33.0
2551*	Mini Mag	E78-15	21	4-6	4	6.5	5.2	27.0

* Race only, not for street use.
Tubes Recommended.

M/T® Wheel Info

Lug Nuts

All Classic II, Classic Lock, and SideBiter Wheels use bulge acorn (conical seat) lug nuts. Mickey Thompson recommends duplex bulge acorns on vehicles of GVWR of 6500lbs or greater.

Center Caps

Mickey Thompson Classic II and Classic Lock Wheels come with 'o'-ringed, chrome, closed center caps (some applications have screw on caps). Optional polished aluminum center caps are also available. Refer to wheel specifications page for cap numbers to obtain proper part numbers per specific wheel. Open end caps and special fitment caps sold separately.

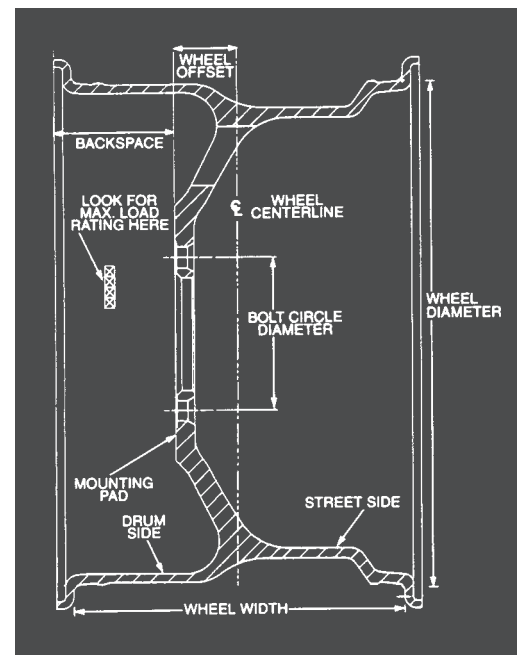
All SideBiter wheels come with painted caps.

Back Spacing

Also called rear spacing. Distance from extreme back edge of rim, not bead seat, to the mounting pad. Lay a straight edge across back edge of rim and measure down to mounting pad.

Wheel Offset

The distance from the wheels centerline to the plane at which the wheel meets the hub. Positive offset is toward the outside of the rim, negative offset is toward the inside. Zero offset is the center of the rim.





SideBiter®

Styled after one of the best known innovations in off-road history, Mickey Thompson's revolutionary "tread-on-the-sidewall" tire design called SideBiter®, this new wheel is built to be a heavy duty performer with an easy to clean high gloss finish and exceptional styling designed to make your Jeep, Truck, or 4x4 look great!

- Tough High Gloss Black Finish
- High Strength Low Pressure Casting
- Embossed Center Cap With M/T Logo
- Available in 15"-16"-17" Diameters
- Lifetime Limited Guarantee Against Structural Defects

Part #	Size	Appx. Wt.	Bolt Circle	Back Space	Offset (mm)	Max Load	Repl. Cap †	Part #	Size	Appx. Wt.	Bolt Circle	Back Space	Offset (mm)	Max Load	Repl. Cap
158421	15x8	24	5x4.5	3-5/16"	-30	2,000	401518	168482	16x8	24	8x6.5	4-1/2"	0	3,200	401520
158401	15x8	23	5x5.5	3-5/16"	-30	2,000	401519	179431	17x9	32	5x5.0	4-1/2"	-12	2,500	401518
158411	15x8	24	6x5.5	3-5/16"	-30	2,000	401517	179401	17x9	32	5x5.5	5"	0	2,500	401519
150421	15x10	28	5x4.5	3-5/8"	-46	2,500	401518	179462	17x9	26	6x135	5"	-1	2,500	401517
150401	15x10	27	5x5.5	3-3/8"	-53	2,500	401519	179412*	17x9	30	6x5.5	5"	0	2,500	401517
150411	15x10	28	6x5.5	3-1/2"	-53	2,500	401517	179170	17x9	30	8x170	5"	0	3,200	401520
168412*	16x8	26	6x5.5	4-1/2"	0	2,500	401517	179481	17x9	30	8x6.5	5"	0	3,200	401520
168170	16x8	24	8x170	4-1/2"	0	3,200	401520								

All SideBiter Wheels use bulge acorn (conical seat) lug nuts. Mickey Thompson recommends duplex bulge acorns on vehicles of GVWR of 6500lbs or greater.

* Hub centering ring included for late model Chevy/GMC application





Classic II

Classic style with a highly polished finish and polished hand holes. The M/T® stamp of quality and limited lifetime guarantee gives added value to this popular truck wheel.

- Steel Inserts in the Lug Holes Provide a Stronger Seat Area
- Highly Polished Surface
- Hand Holes are Polished Inside for a More Distinctive and Attractive Look
- High Load Rating
- Chrome Center Cap Included
- Lifetime Limited Guarantee for Structural Defects

Part #	Size	Appx. Wt.	Bolt Circle	Back Space	Offset (mm)	Max Load	Repl. Cap †	Part #	Size	Appx. Wt.	Bolt Circle	Back Space	Offset (mm)	Max Load	Repl. Cap †
358421	15x8	17	5-4.5	3-5/16"	-30	2,000	401216	379452	17x9	23	5-135	4-1/2"	-12	3,000	401414
358441	15x8	17	5-4.75	3-5/16"	-30	2,000	401216	379403	17x9	23	5-150	5-1/2"	+13	3,000	401515
358431	15x8	17	5-5	3-5/16"	-30	2,000	401216	379421	17x9	26	5-4.5	4-1/2"	-12	3,000	401516
358401	15x8	17	5-5.5	3-5/16"	-30	2,000	401214	379431	17x9	26	5-5	4-1/2"	-12	3,000	401216
358411	15x8	17	6-5.5	3-5/16"	-30	2,000	401214	379402	17x9	23	5-5.5	4-1/2"	-12	3,000	401214
350421	15x10	20	5-4.5	3-5/8"	-48	2,500	401216	379462	17x9	23	6-135	5-1/2"	+12	3,000	401414
350401	15x10	20	5-5.5	3-5/8"	-48	2,500	401214	379411	17x9	23	6-5.5	5"	+0	3,000	401214
350411	15x10	20	6-5.5	3-5/8"	-48	2,500	401214	379412*	17x9	26	6-5.5	4-1/2"	-12	3,000	401514
352401	15x12	23	5-5.5	3-5/8"	-73	3,000	401214	379413*	17x9	24	6-5.5	5"	+0	3,000	401514
352411	15x12	23	6-5.5	3-5/8"	-73	3,000	401214	379170	17x9	24	8-170	5"	+0	3,000	401218
368452	16x8	21	5-135	3-3/4"	-19	3,100	401414	379481	17x9	24	8-6.5	5"	+0	3,000	401218
368421	16x8	21	5-4.5	4-7/16"	+0	3,100	401216	389403	18x9	24	5-150	5-1/2"	+13	3,100	401515
368431	16x8	22	5-5	4"	-13	3,100	401216	389431	18x9	29	5-5	4-1/2"	-13	3,100	401216
368401	16x8	21	5-5.5	4-7/16"	+0	3,100	401214	389413*	18x9	26	6-5.5	5"	+0	3,100	401514
368411	16x8	21	6-5.5	4-7/16"	+0	3,100	401214	389173	18x9	26	8-170	5"	+0	3,100	401218
368412*	16x8	21	6-5.5	3-5/8"	-22	3,100	401514	389483	18x9	26	8-6.5	5"	+0	3,100	401218
368170	16x8	21	8-170	4"	-13	3,100	401218	329403	20x9	29	5-150	5-1/2"	+13	3,100	401515
368482	16x8	21	8-6.5	4"	-13	3,100	401218	329413*	20x9	31	6-5.5	5"	+0	3,100	401514
360452	16x10	24	5-135	4-7/16"	-27	3,100	401414	329173	20x9	31	8-170	5"	+0	3,100	401218
360421	16x10	24	5-4.5	4-7/16"	-27	3,100	401216	329483	20x9	30	8-6.5	5"	+0	3,100	401218
360401	16x10	23	5-5.5	4-7/16"	-27	3,100	401214								
360411	16x10	23	6-5.5	4-7/16"	-27	3,100	401214								
360412*	16x10	24	6-5.5	4-7/16"	-27	3,100	401514								
360170	16x10	24	8-170	4-7/16"	-27	3,100	401218								
360481	16x10	24	8-6.5	4-7/16"	-27	3,100	401218								
361412*	16x12	24	6-5.5	4-1/2"	-51	3,600	401514								
361170	16x12	24	8-170	4-1/2"	-51	3,600	401218								
361481	16x12	24	8-6.5	4-1/2"	-51	3,600	401218								

All Classic II Wheels use bulge acorn (conical seat) lug nuts. Mickey Thompson recommends duplex bulge acorns on vehicles of GVWR of 6500lbs or greater.

† Caps listed are chrome steel caps and are included in the box. Optional 100000 series "polished aluminum" caps are available (sold separately) See page 26 for applications.

* Hub centering ring included for late model Chevy/GMC application



Classic Lock

This simulated bead lock wheel features the same great styling as our Classic II wheel with an added bead lock-type ring, polished and embossed with large M/T logos. Gives the look and feel of a real bead lock without the expense. Great for 4x4 owners that are looking for off-road race or rock crawler styling.

- Large Bolt on Simulated Bead Lock Ring
- Street Legal with a Real Competition "Look"
- M/T® Logo Embossed into Simulated Lock Ring
- Highly Polished Surface
- Hand Holes are Polished Inside for a More Distinctive and Attractive Look
- High Load Rating
- Valve Stem, Center Cap, Polished Ring and Hardware Included
- Lifetime Limited Guarantee for Structural Defects

Part #	Size	Appx. Wt.	Bolt Circle	Back Space	Offset (mm)	Max Load	Repl. Cap †	Part #	Size	Appx. Wt.	Bolt Circle	Back Space	Offset (mm)	Max Load	Repl. Cap †
458421	15x8	20	5-4.5	3-5/16"	-30	2,000	401216	479452	17x9	26	5-135	4-1/2"	-12	2,500	401414
458401	15x8	20	5-5.5	3-5/16"	-30	2,000	401214	479421	17x9	26	5-4.5	4-1/2"	-12	2,500	401216
458411	15x8	20	6-5.5	3-5/16"	-30	2,000	401214	479431	17x9	27	5-5	4-1/2"	-12	3,000	401216
450421A	15x10	22	5-4.5	3-5/8"	-48	2,500	401216	479402	17x9	26	5-5.5	4-1/2"	-12	2,500	401214
450401A	15x10	22	5-5.5	3-5/8"	-48	2,500	401214	479462	17x9	26	6-135	5-1/2"	+12	2,500	401414
450411A	15x10	22	6-5.5	3-5/8"	-48	2,500	401214	479412*	17x9	26	6-5.5	4-1/2"	-12	2,500	401514
468452	16x8	24	5-135	4"	-12	3,100	401414	479170	17x9	26	8-170	5"	+0	3,100	401218
468421	16x8	24	5-4.5	4"	-12	3,100	401516	479481	17x9	26	8-6.5	5"	+0	3,100	401218
468401	16x8	24	5-5.5	4"	-12	3,100	401214	461412*	16x12	26	6-5.5	4-1/2"	-51	3,100	401514
468412*	16x8	24	6-5.5	4"	-12	3,100	401514	480402	18x10	27	5-5.5	4-1/2"	-25	2,500	401214
468170	16x8	24	8-170	4-1/4"	-6	3,100	401218	480412*	18x10	27	6-5.5	4-1/2"	-25	2,500	401514
468482	16x8	24	8-6.5	4-1/4"	-6	3,100	401218	480170	18x10	27	8-170	4-1/2"	-25	3,100	401218
460421	16x10	24	5-4.5	4-1/2"	-25	3,100	401216	480481	18x10	27	8-6.5	4-1/2"	-25	3,100	401218
460401	16x10	24	5-5.5	4-1/2"	-25	3,100	401214	420170	20x10	32	8-170	4-1/2"	-25	3,100	401218
460412*	16x10	24	6-5.5	4-1/2"	-25	3,100	401514	420481	20x10	32	8-6.5	4-1/2"	-25	3,100	401218
460170	16x10	25	8-170	4-1/4"	-32	3,100	401218								
460481	16x10	25	8-6.5	4-1/4"	-32	3,100	401218								
461170	16x12	26	8-170	4-1/2"	-51	3,100	401218								
461481	16x12	26	8-6.5	4-1/2"	-51	3,100	401218								

All Classic Lock Wheels use bulge acorn (conical seat) lug nuts. Mickey Thompson recommends duplex bulge acorns on vehicles of GVWR of 6500lbs or greater.

† Caps listed are chrome steel caps and are included in the box. Optional 100000 series "polished aluminum" caps are available (sold separately) See page 26 for applications.

* Hub centering ring included for late model Chevy/GMC application

Classic Lock Color Rings

Enhance the look of your Classic Lock Wheels by adding these stylish color rings. Kit includes 1 ring and new mounting hardware. Polished replacement rings also available.



Ring Color	15" Wheels	16" Wheels	17" Wheels	18" Wheels	20" Wheels
BLACK	511501	511601	511701	511801	511201
BLUE	511502	511602	511702	511802	511202
GOLD	511503	511603	511703	511803	511203
RED	511504	511604	511704	511804	511204
POLISHED	511505	511605	511705	511805	511205

Replacement Caps

Aluminum Caps (Provide Harsh Weather Durability)		O.D.	Length
101214	Closed Cap for 5-5.5 and 6-5.5 B.C.	4.250	4.125
101215	Open Cap for 5-5.5 and 6-5.5 B.C.	4.250	4.125
101216	Closed Cap for 5-4.5, 5-4.75, and 5-5 B.C.	3.285	3.375
101217	Open Cap for 5-4.5, 5-4.75, and 5-5 B.C.	3.285	3.500
101218	Closed, Short Cap for 8-6.5 and 8-170mm B.C.	5.145	4.625
101219	Open, Short Cap for 8-6.5 and 8-170mm (Excl. Dana 60)	5.145	4.625
101220	Long Closed Cap for 8-6.5 and 8-170mm	5.145	6.000
101221	Short Closed Cap for 8-6.5 and 8-170mm	5.145	4.000
101222	Open Cap (Dana 60) Old #8167	5.145	4.625

Chrome Steel Caps with M/T Gel Cap Button (Old Style Classic II Caps)

301214	Closed Cap for 5-5.5 and 6-5.5 B.C.
301216	Closed Cap for 5-4.5, 5-4.75, and 5-5 B.C.
301218	Closed, Short Cap for 8-6.5 and 8-170mm B.C.
301414	Closed Cap for Ford 5-135mm and 6-135mm
301514	Closed Cap for Chevy, Toyota 6-5.5 B.C. External Mount (screw-on cap)

Embossed M/T Chrome Center Caps (Replacement Cap for all Current Wheels)

401214	Closed Cap for 5-5.5 and 6-5.5 B.C.
401216	Closed Cap for 5-4.5, 5-4.75, and 5-5 B.C.
401218	Closed, Short Cap for 8-6.5 and 8-170mm B.C.
401414	Closed Cap for Ford 5-135mm and 6-135mm
401514	Closed Cap for Chevy, Toyota 6-5.5 B.C. External Mount (screw-on cap)
401515	Closed Cap 5-150mm B.C. External Mount (screw-on cap)
401516	Closed External Mount Cap for 5-4.5" B.C. (plastic snap-in style cap)

SideBiter Wheel Replacement Caps

401517	Closed, Bolt-on cap for 6-5.5 and 6-135mm B.C.
401518	Closed, Bolt-on cap 5-4.5 and 5-5 B.C.
401519	Closed, Bolt-on cap for 5-5.5 B.C.
401520	Closed, Bolt-on cap for 8-6.5 and 8-170mm B.C.

Aluminum Cap



Old Style Cap



Embossed Cap



SideBiter Cap



M/T[®] Promo Materials

Point of Purchase Displays



3'x8' Shop Banner Part # P675 - 3'x8' Vinyl banner with large Mickey Thompson logo will let customers know that you proudly sell the Mickey Thompson brand.



18"x36" Mini Banner Part # P600 - 18"x36" Mini vinyl banner, black with large Mickey Thompson logo great for showroom displays.



Mini Tire & Wheel Display

Part # P950 - This mini tire & wheel display is less than 24" tall and is a great way to show off the Mickey Thompson light truck tire and wheel line when you have limited floor space for full size tires and wheels. Holds Mickey Thompson pocket guide brochures (included).

Full Size Tire Display

Part # P960 - This Heavy duty display securely holds three tires. (M/T embossed aluminum sign and display tires sold separately)

NEW!
FOR 2010



12"x24" Metal Tacker Sign

Part # P750 - This embossed aluminum tacker sign is a great addition to any showroom or work shop. Transparent red and yellow inks and triple layer embossing make this sign really stand out. Pre drilled for mounting.



"Sold Here" Decals

Part # P510 - These "Mickey Thompson Sold Here" decals are great for your front door or window. Let passers by know that you proudly sell mickey Thompson products.

Stickers

Part # P420 - These mini stickers are great to hand out at your next event or open house. Pack of 100.



Tire Stands

Part # P550 - Adjustable tire stands accommodate various tire widths. Great way to feature your hottest selling Mickey Thompson Tires.



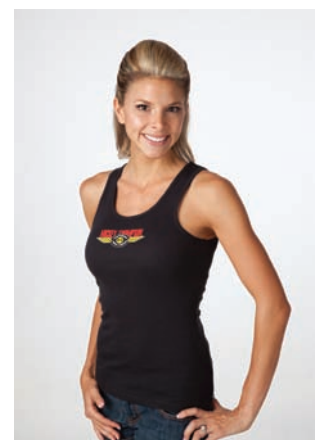
NEW!
STYLES FOR 2010

M/T® Apparel

Mickey Thompson Apparel



Download the 'Classic' series
and 'Legend' series
apparel catalogs today at
www.mickeythompson tires.com/catalogs



Jackets • Hoodies • Polos • Pit Shirts • Tees • Tanks • Kids Tees • Aprons • Socks • Gloves • Beanies • Hats

order online at: www.mickeythompson tires.com/apparel

Mickey Thompson® Standard Limited Warranty

Every first quality tire bearing our name and serial number and not branded "NA" which is not used for racing is warranted to be free of defects in workmanship and material during the life of the original tread design. Original tread life is completed when the tire is worn to 3 remaining 32nds.

If, upon presentation of a tire, our examination shows a tire is eligible for adjustment credit under the terms of the warranty, we will make a reasonable allowance on the purchase of a new tire based on the then current "Suggested Retail Price". Any such allowance will be based on the tread wear remaining as set forth in the adjustment policy available from the company.

This warranty is made for the exclusive benefit of the original owner actually using these products, is not assignable, and no claim hereunder will be recognized unless submitted on our standard claim form duly filled out and signed by such owner.

This warranty, does not in any way extend to any consequential damages or losses.

There is no other warranty, or liability, expressed or implied, applicable to these products. No representative has the authority to make any representation, promise, or agreement except as stated herein.

Some states do not allow the exclusion or limitation of incidental or consequential damages, so the above limitation or exclusion may not apply.

This warranty gives you specific legal rights, and you may also have other rights which vary from state to state.

Tire Adjustment Policy

Any Mickey Thompson tire that becomes unserviceable as a result of an eligible adjustable condition during the first 2/32nds of tread wear will be replaced FREE OF CHARGE. A tire worn beyond 2/32nds that exhibits an eligible adjustable condition will be replaced on a pro rated basis only.

Any Mickey Thompson tire that does not deliver satisfactory service due to a balance, out of round or a ride complaint problem will be replaced without charge within the first 2/32nds of the tire's tread life. After the first 2/32nds the tire is not warrantable for the aforementioned conditions. The schedule of tire pro ration is available by request through Mickey Thompson Performance Tires & Wheels. No adjustments will be made in cases of abuse by user, such as, but not limited to:

- | | |
|---------------------------|-----------------------------|
| • Road hazard | Cut by vehicle |
| • Trued tires | Nail holes, cuts, punctures |
| • Under or over inflation | Run flat |
| • Wheel alignment | |

M/T is not responsible for abnormal wear due to suspension modifications and improper maintenance.

TIRES: RADIAL VERSUS BIAS

Bias tires tend to ride and handle differently than radials. Bias ply or bias belted and radial tires should not be mixed on the same vehicle.

NO WARRANTY POLICY RACING TIRES AND TUBES

Mickey Thompson Tire Company offers racing tires and tubes for sale and tires which are used in racing only upon the conditions and upon the terms contained in this disclaimer of liability and indemnity. Due to the many varied and different conditions to which racing tires and tubes are exposed and because of the manner in which racing is conducted, Mickey Thompson Tire Company makes absolutely no warranty, expressed or implied, as to the fitness for a general or particular purpose or of merchantability in connection with any offer of sale or sale of racing tires and tubes. "MICKEY THOMPSON RACING TIRES OR TIRES USED IN RACING ARE SOLD AS IS". Race tires are not tested or labeled to meet FVMSS 109 and therefore it is illegal to sell race tires for use on public highways. Any person selling Mickey Thompson racing tires or tubes for highway use agrees to indemnify and reimburse Mickey Thompson for all loss, damage or liability Mickey Thompson Tire Company may suffer because of such sales.

MICKEY THOMPSON WHEELS LIMITED LIFETIME WARRANTY

Mickey Thompson Performance Tires warrants to the original purchaser that a new M/T Wheel is free from defects in material and workmanship and agrees to replace a M/T Wheel which fails in normal use and service resulting from defects in material and workmanship for the life of the vehicle for which said wheel was intended and purchased for. Mickey Thompson Performance Tires does not warrant any wheel which has been subject to misuse or abuse including the following; (a) Using tires which are oversized according to the standards recommended by the Tire and Rim Association, Inc.; (b) Loading the wheel beyond the applicable maximum wheel load as specified by Mickey Thompson Performance Tires; (c) Any type of racing or activity which subjects wheels to the abuse of racing, whether on the road or off; (d) Inflating beyond the maximum specified on any given tire size as specified by Mickey Thompson Performance Tires; (e) Changing or altering the original condition of the wheel or by subjecting it to any processing such as welding or straightening.

THERE IS NO WARRANTY THAT WHEELS ARE MERCHANTABLE OR SATISFACTORY FOR ANY PARTICULAR PURPOSE NOR IS THERE ANY OTHER WARRANTY EXPRESSED OR IMPLIED EXCEPT AS SET FORTH HEREIN. Mickey Thompson Performance Tires shall not be liable for any incidental or consequential damages for any breach of warranty, its liability and the purchaser's exclusive remedy being expressly limited to replacement of defective wheel, as herein provided. Replacement will be handled by an authorized Mickey Thompson Performance Tire Dealer or Mickey Thompson Performance Tire representative.

This warranty gives you specific legal rights. You may also have other rights under applicable laws.

For service assistance or information call or write to:

Mickey Thompson Performance Tires
4600 Prosper Drive, Stow, OH 44224
PH. (330) 928-9092 FAX (330) 928-0503

DISTRIBUTED BY:



www.mickeythompson tires.com

All measurements are + or - 1% and are taken on measuring rim at approximately 70% of maximum inflation pressure unless otherwise noted.
All specifications subject to change without notice. Not responsible for typographical errors.